



REGIONAL OFFICE OF EDUCATION  
KANE COUNTY

2013-2014  
ANNUAL REPORT

PATRCIA DAL SANTO  
REGIONAL SUPERINTENDENT OF SCHOOLS





REGIONAL OFFICE OF EDUCATION  
KANE COUNTY

Patricia Dal Santo, Regional Superintendent

**Kane County  
Regional Office of Education  
Fiscal Year 2014 Annual Report**

As Superintendent of the Kane County Regional Office of Education, Kane County, Illinois, I hereby submit the annual report of the activities of this office from July 1, 2013 through June 30, 2014.

This report is an overview and is not inclusive of all the services and collaborative partnerships the Regional Office of Education provides as an educational leader for the benefit of the schools and citizens of Kane County. This report uses information from end-of-year reports of our programs and services and from end-of-year school reports from the Illinois State Board of Education website to make this Annual Report as comprehensive as possible. We hope it will help you better understand the work our office and the educators of Kane County provide to ensure our schools are safe and nurturing places of learning where all people, young and old alike, are valued and respected.

Sincerely,

Patricia Dal Santo  
Regional Superintendent of Schools  
Kane County Regional Office of Education

# Table of Contents

---

<b>TABLE OF CONTENTS .....</b>	<b>2</b>
<b>THE MISSION.....</b>	<b>4</b>
<b>KANE COUNTY SCHOOL DISTRICT INFORMATION.....</b>	<b>4</b>
<b>KANE COUNTY SCHOOL DISTRICT BOUNDARY MAP.....</b>	<b>5</b>
<b>KANE COUNTY REGIONAL OFFICE OF EDUCATION .....</b>	<b>6</b>
<b>ORGANIZATIONAL CHART.....</b>	<b>6</b>
<b>LEGISLATIVE .....</b>	<b>7</b>
LEGAL REFERENCE FOR ANNUAL REPORT .....	7
LEGISLATIVE DEVELOPMENT OF THE OFFICE.....	7
REGIONAL BOARD OF SCHOOL TRUSTEES .....	7
SUPERINTENDENT OF EDUCATIONAL SERVICE REGION .....	8
REGIONAL SUPERINTENDENTS OF SCHOOLS .....	9
<b>ALTERNATIVE PROGRAMS .....</b>	<b>10</b>
TRUANCY PREVENTION/INTERVENTION PROGRAM (105 ILCS 5/3-13).....	10
REGIONAL SAFE SCHOOLS PROGRAM (RSSP) (105 ILCS 5/13 A-8) .....	11
GENERAL EDUCATIONAL DEVELOPMENT (GED) (105 ILCS 5/3-15.12) .....	11
JUVENILE JUSTICE CENTER (105 ILCS 5/14-7.03) .....	12
HOME SCHOOLING (105 ILCS 5/26-1) .....	12
DROPOUT INTERVENTION PROGRAM .....	12
<b>BUSINESS OFFICE.....</b>	<b>13</b>
BUDGET – COUNTY PORTION .....	13
INSTITUTE FUND REPORT (105 ILCS 5/3-12) .....	14
<b>CERTIFICATION (105 ILCS 5/21).....</b>	<b>15</b>
<b>HOMELESS EDUCATION PROGRAM.....</b>	<b>16</b>
KANE COUNTY ROE EQUAL CHANCE PROGRAM.....	16
<b>NETWORKS .....</b>	<b>17</b>
<b>PARTNERSHIPS.....</b>	<b>18</b>
KANE COUNTY HUMAN RESOURCE CONSORTIUM (KCHRC).....	18
OPERATION SNOWBALL.....	18
STRATEGIC PLANNING .....	19
SPELLING BEE.....	19
ASSOCIATION FOR INDIVIDUAL DEVELOPMENT (AID) .....	19
<b>PROFESSIONAL DEVELOPMENT (105 ILCS 5/3-14.6-9).....</b>	<b>20</b>
ILLINOIS ADMINISTRATORS’ ACADEMY (105 ILCS 5/2-3.53).....	20
INSTITUTE DAY (105 ILCS 5/3-11) .....	21
OTHER PROFESSIONAL DEVELOPMENT OFFERINGS.....	22
GIFTED EDUCATION SEMINAR.....	23
EDUCATOR OF THE YEAR AWARDS .....	23
<b>SCHOOL SAFETY &amp; SECURITY (105 ILCS 5/3-14.20).....</b>	<b>24</b>
HEALTH AND LIFE SAFETY .....	24
SCHOOL HEALTH/WELLNESS TEAM .....	24

SCHOOL SAFETY & SECURITY TEAM .....	25
FACILITY MANAGERS NETWORK.....	25
<b>TECHNOLOGY .....</b>	<b>26</b>
AREA ONE WEST LEARNING TECHNOLOGY CENTER (105 ILCS 5/2-3.117).....	26
FINGERPRINTING (105 ILCS 5/10-21.9) .....	26
GEOGRAPHIC INFORMATION SYSTEM (GIS) (105 ILCS 5/7-6) .....	27
LEARNING TECHNOLOGY SERVICES (105 ILCS 5/2-3.118) .....	27
<b>TRANSPORTATION .....</b>	<b>28</b>
SCHOOL BUS DRIVER TRAININGS (105 ILCS 5/3-14.23).....	28
<b>FINANCE REPORTS.....</b>	<b>29</b>
CERTIFIED PERSONNEL .....	29
CERTIFIED PERSONNEL CONTINUED .....	30
CLASSROOM BUILDINGS IN USE- JULY 1, 2013 – JUNE 30, 2014 .....	31
PUBLIC SCHOOL ENROLLMENT – SEPTEMBER 2013 .....	31
ISBE FEDERAL & STATE REVENUE – FISCAL YEAR ENDING JUNE 30, 2014 .....	32
<b>FY14 ANNUAL REPORT INDEX .....</b>	<b>33</b>

# The Mission

---

The mission of the Kane County Regional Office of Education is to advocate for education, provide leadership, perform regulatory functions, and coordinate state and local services for educators, school districts, and the community.

## Kane County School District Information

---

### **School District U-46**

Dr. Jose Torres, Superintendent  
355 E. Chicago Street,  
Elgin, IL 60120  
Phone: 847-888-5000  
[www.u-46.org](http://www.u-46.org)

### **School District 101**

Dr. Lisa Hichens, Superintendent  
335 W. Wilson Street  
Batavia, IL 60510  
Phone: 630-937-8800  
[www.bps101.net](http://www.bps101.net)

### **School District 129**

Dr. James Rydland, Superintendent  
Box 4430, 80 S. River Street  
Aurora, IL 60506  
Phone: 630-301-5000  
[www.sd129.org](http://www.sd129.org)

### **School District 131**

Dr. Jerome Roberts, Superintendent  
417 Fifth Street  
Aurora, IL 60505  
Phone: 630-299-5550  
[www.d131.org](http://www.d131.org)

### **School District 300**

Dr. Michael Bregy, Superintendent  
300 Cleveland Avenue  
Carpentersville, IL 60110  
Phone: 847-426-1300  
[www.d300.org](http://www.d300.org)

### **School District 301**

Dr. Todd Stirn, Superintendent  
275 South Street, Box 396  
Burlington, IL 60109  
Phone: 847-464-6005  
[www.burlington.k12.il.us](http://www.burlington.k12.il.us)

### **School District 302**

Dr. Jeffrey Schuler, Superintendent  
47W326 Keslinger Road  
Maple Park, IL 60151  
Phone: 630-365-5111  
[www.kaneland.org](http://www.kaneland.org)

### **School District 303**

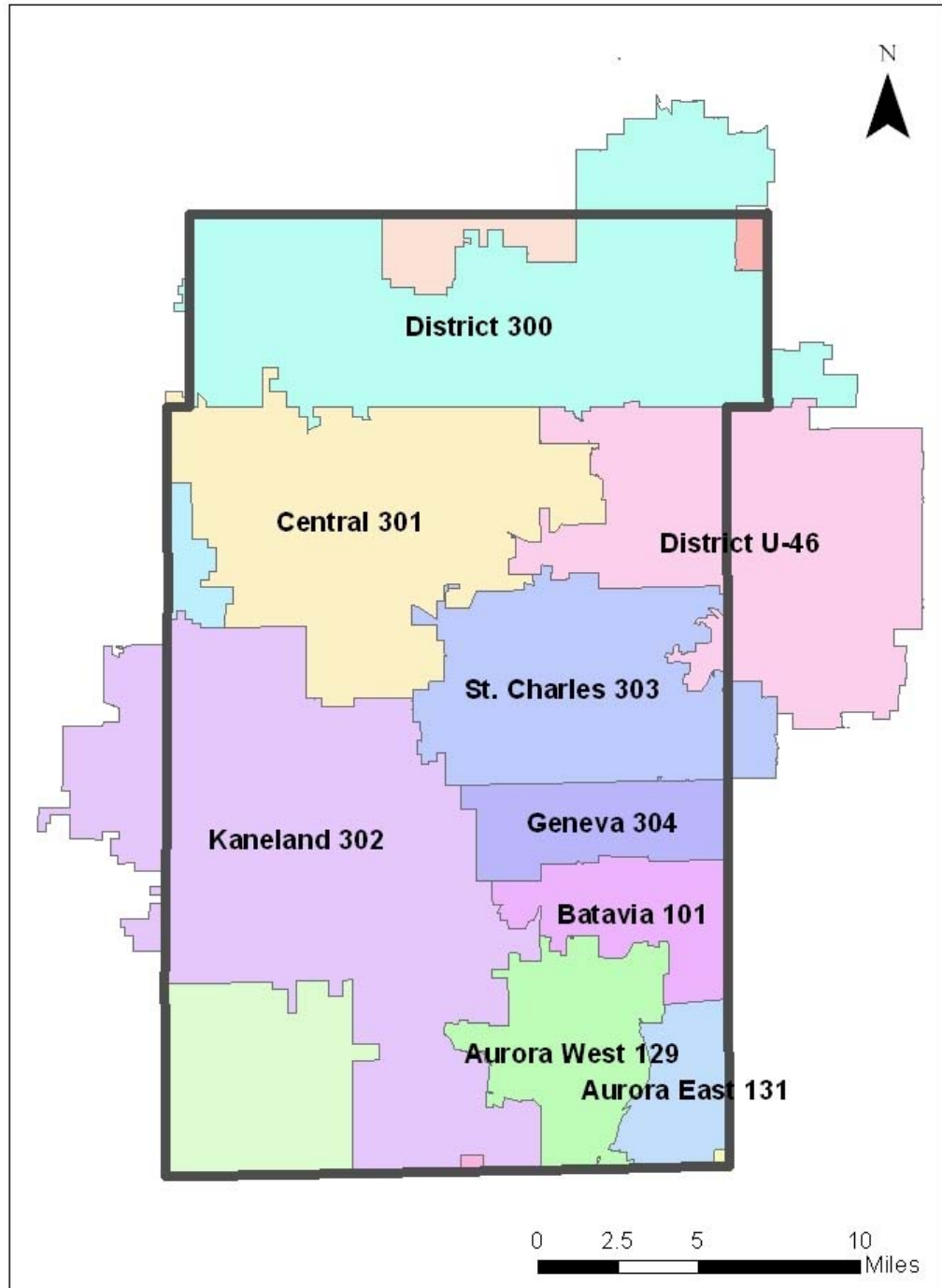
Dr. Donald Schlomann, Superintendent  
201 South 7<sup>th</sup> Street  
St. Charles, IL 60174  
Phone: 630-513-3030  
[www.d303.org](http://www.d303.org)

### **School District 304**

Dr. Kent Mutchler, Superintendent  
227 North Fourth Street  
Geneva, IL 60134  
Phone: 630-463-3000  
[www.geneva304.org](http://www.geneva304.org)

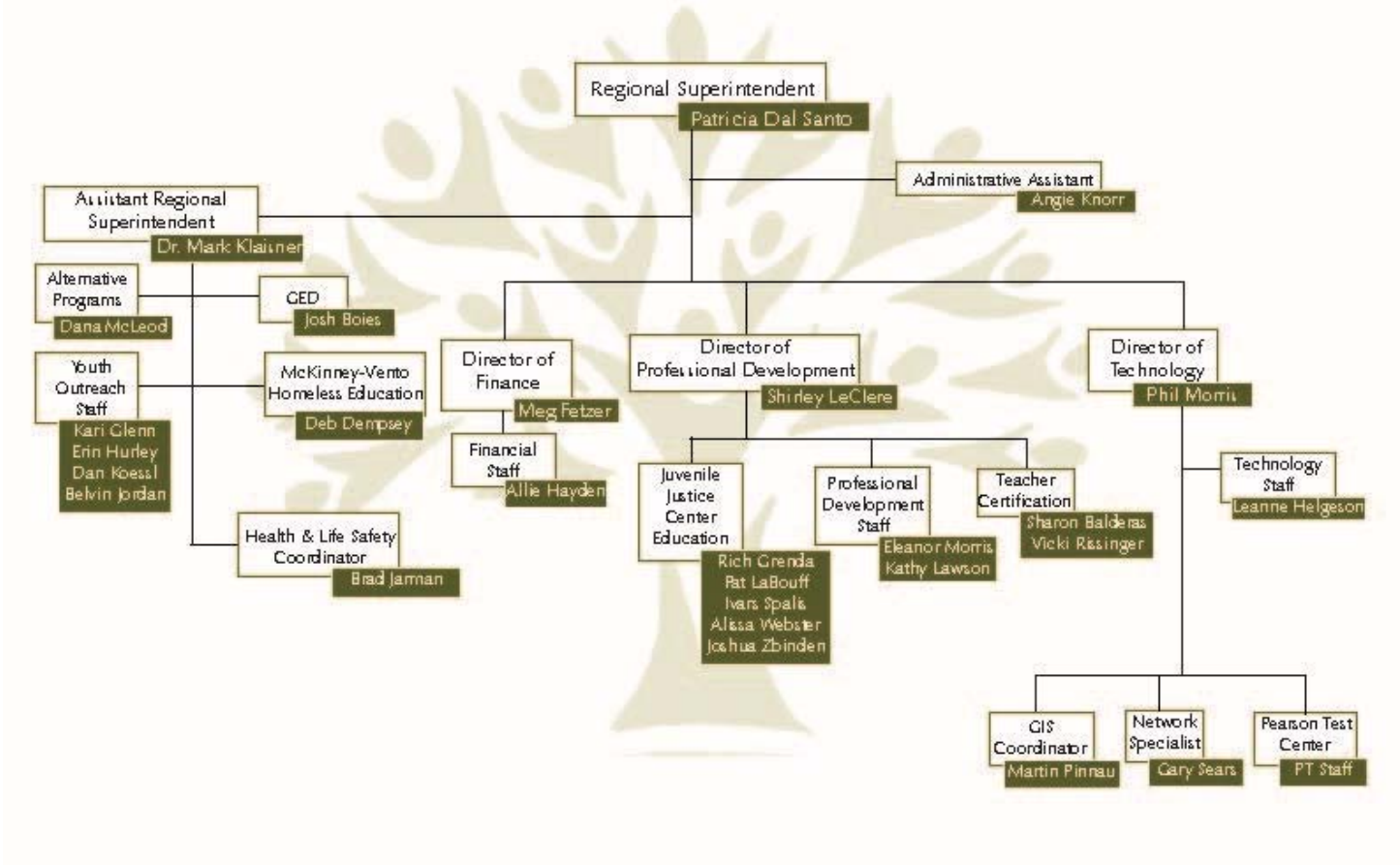
# Kane County School District Boundary Map

---



# Kane County Regional Office of Education Organizational Chart

## 2013-2014 Kane County Regional Office of Education Organizational Chart



# Legislative

Contact Person: Patricia Dal Santo, Regional Superintendent, pdalsanto@kaneroe.org

## **Legal Reference for Annual Report**

This annual report is designed in part to meet the provisions of Chapter 105, Article 3, Sections 5/3-5, 5/3-6 and 5/3-15.8 of the School Code of Illinois. The report of schools visited and other official acts, meetings and activities of the office are provided to the Public Service Committee of the Kane County Board at regular monthly meetings.

## **Legislative Development of the Office**

- 1829 The sixth General Assembly mandated appointment of a Commissioner of School Lands.
- 1841 Title changed to County Commissioner and Ex-Officio County Superintendent of Schools.
- 1865 Legislature called for the election of the County Superintendent of Schools.
- 1973 Consolidation of smaller counties resulted in 78 regions.
- 1975 Title of Chief Administrative Officer of an education service region changed to Regional Superintendent of Schools.
- 1977 Further consolidation resulted in 57 regions in Illinois.
- 1993 Educational Service Region Office renamed Regional Office of Education.
- 1995 Further consolidation resulted in 45 regions, each with a population of at least 45,000 inhabitants.
- 2015 Further consolidation will result in 35 regions in Illinois each with a population of at least 61,000 inhabitants.

## **Regional Board of School Trustees**

The Regional Board of School Trustees is an elected body with the sole responsibility of action on detachment/annexation petitions regarding boundary changes between school districts in the region. The board meets on the first Monday of January, April, July and October. Meetings may be canceled due to lack of agenda items. Patricia Dal Santo, Regional Superintendent, is the ex-officio Secretary for the Board of Trustees.

The members of the Regional Board of School Trustees are:

Penny Wegman, President	Elgin Township	Term Exp. 2017
Mary Shepro, Vice President	St. Charles Township	Term Exp. 2019
Kevin Williams	Geneva Township	Term Exp. 2019
Chad Koppie	Rutland Township	Term Exp. 2019
Juan Sifuentes	Aurora Township	Term Exp. 2015
G. Michael Stoffa	Blackberry Township	Term Exp. 2017
Stephen R. Wallace	Sugar Grove Township	Term Exp. 2015



## ***Superintendent of Educational Service Region***

The act of Congress which admitted Illinois to the Union in 1818 set aside the sixteenth section of every township for the use of schools. In 1819, therefore, the General Assembly directed the county commissioners' court in each county to appoint three trustees from each township. These trustees, whose terms ran for four years, were charged with hiring a surveyor, laying out section 16 into lots, leasing those lots for no more than a ten year period, and appointing a clerk and treasurer to handle the leases. In 1827 this was modified to give the trustees responsibility for laying out school districts within the township. These districts were to contain no fewer than 18 scholars, and the trustees were to hire a teacher for the district.

The situation changed in 1829, when Congress agreed to permit the sale of section 16 lands. For the first time, the county commissioners' court could appoint a commissioner and agent for the county school lands. This position was the predecessor of the Regional Superintendent of Schools. The commissioner was required to prepare a record of the school lands in the county. When nine-tenths of the voters in any township decided to sell their school lands, they were required to petition the commissioner in writing. In turn, he arranged the sale, and loaned the money from the sale back to the township.

During the 1830s, minor changes were made in the school law. The percentage of voters required to sign a petition for sale of school lands was reduced and the county commissioners' court again appointed township school trustees. Most important, in 1837 the citizens of a township were given the choice of incorporating for the purpose of establishing and supporting common schools. The trustees were assigned the superintendence of the township schools, and they could appoint a clerk, who would also act as treasurer.

The school land commissioner was required to pay to this treasurer all of the money in his care which belonged to the township, and would deliver to him all bonds, notes, and mortgages. The township treasurer made an abstract, in return, which showed the name of each teacher, the number of scholars at each school, and the total number of days taught. The treasurer was to deliver this abstract to the school land commissioner and receive the interest due the township from the state's school, college, and seminary lands.

In 1841, the office of school commissioner became elective, for a term of two years. This same year, each school district was required to elect a board of three school directors, also for two-year terms. The school directors were empowered to select building sites, build schools, employ teachers, and visit the district schools. In townships which had not chosen to incorporate, the trustees of school lands could appoint school directors if none were elected.

The school law was under continual revision during the 1840's, and in 1845 the school commissioner was made *ex officio* county superintendent of the common schools. His duties included visiting the schools, examining teachers, and issuing certificates. By 1865, each county elected a superintendent of schools every four years. Township school trustees reported to this superintendent on the number of schools, the number of scholars, the number of male and female teachers, the compensation of teachers, the number of persons under age 21 in the township, the principal and interest of the township fund, the amount of the common school fund received by the treasurer, the amount raised by taxation, all other receipts and expenditures, and any other information required by the superintendent.

Most of the original regulatory duties as mandated by Illinois School Law remain the responsibility of the Regional Superintendent of Schools like registering educators' certificates, approving and conducting teacher institutes, handling school lands, visiting schools, and examining the accounts of all school treasurers in the county. But over the last

*“You don't lead by pointing and telling people some place to go. You lead by going to that place and making a case.”*

*~ Ken Kesey*

century many more mandated duties and responsibilities of the office have been added. For example in the area of certification, before a certificate can be re-registered, every individual professional development activity in the educator's required professional growth plan must be reviewed and approved as part of the rigorous re-certification process. Every new school employee is now fingerprinted and a criminal background check is conducted in partnership with the Illinois State Police and the FBI.

While the world has seen vast changes over the last century, the Regional Office of Education remains committed to providing quality service and performing its mandated functions. The Regional Office of Education remains dedicated to ensuring every child and citizen has the educational opportunity to achieve success.

## **Regional Superintendents of Schools**

R.B. “Bink” Makes	Prior to 1975
James L. Hanson	1975 – 1987
Dr. Douglas L. Hoeft	1987 – 1992
Dr. Clem Mejia	1993 – 2007
Douglas E. Johnson	2007 – 2012
Patricia Dal Santo	2012 - Present

# Alternative Programs

Contact Person: Paige McNulty, Assistant Superintendent, [pmcnulty@kaneroe.org](mailto:pmcnulty@kaneroe.org)

## **Truancy Prevention/Intervention Program (105 ILCS 5/3-13)**

In 2013-2014 the Regional Office of Education completed the 29<sup>th</sup> year of the Kane County Truancy Prevention Program. Youth Outreach Workers (truant officers) collaborate with schools to advocate for students and parents to ensure consistent school attendance.

Kane County had 2,403 official referrals from our local schools requesting truancy assistance from our staff. The services provided during the 2013-2014 year were the following:

<b>Services</b>	<b>2013-2014</b>
School Visits	1,867
Home Visits	368
Student Contacts	2,890
Community Agency Contacts	150
School Conferences	241
Regional Conferences	20
Juvenile Court Cases	16
Adult Court Cases	2

<b>Source of Referrals by District</b>	<b>2013-2014</b>
U46 Elgin	636
101 Batavia	48
129 West Aurora	295
131 East Aurora	858
300 Dundee/Carpentersville	498
301 Central	5
302 Kaneland	6
303 St. Charles	39
304 Geneva	18
<b>By Grade Level</b>	
Elementary K-5	1,144
Middle School	624
High School	635
Other	0
<b>By Gender</b>	
Males	1,218
Females	1,185

### ***Regional Safe Schools Program (RSSP) (105 ILCS 5/13 A-8)***

The Regional Safe Schools Program serves expulsion-eligible and/or multiply suspended students. The statewide program, authorized through the Regional Offices of Education, began serving students in 1996 as established by the Illinois School Code to provide a system of alternative education programs for disruptive students. The purpose of the RSSP is twofold: 1) to increase safety and promote the learning environment in schools and 2) to meet the particular educational needs of disruptive students more appropriately and individually in an alternative educational environment. This is a cooperative effort between the Regional Office of Education and the local school districts. The programs within school districts are designed to meet local needs. In 2013-2014, 200 students were served through this program. Without this program, those students would not have received an education and most likely would have become dropouts.

### ***General Educational Development (GED) (105 ILCS 5/3-15.12)***

General Educational Development (GED) tests are a group of five subject tests which certify the taker has high school-level academic skills. To pass the GED tests and earn a GED credential, test takers must score higher than 40 percent of graduating high school seniors nationwide. In addition they must pass the Constitution test.

The Regional Superintendent is delegated with the responsibility of administering the GED testing program in accordance with the Illinois School Code. This program allows those who are 17 years of age or older to secure a High School Equivalency Certificate upon completing and passing all tests.

Testing centers have been established in Kane County at the Regional Office of Education in Geneva, Elgin Community College in Elgin and Waubensee Community College in Aurora. Tests are administered on Saturdays and require at least 3 Saturdays to complete the battery. The Kane County Regional Office of Education is an official scoring center with equipment for scanning and scoring all tests except the essay portion. A \$50.00 fee is charged to cover the cost, administration, and grading of tests, and the certificate.

In January 2014, the GED changed to being a computer-based test from Pearson. All paper testing ended in December 2013. The Regional Office continues to provide GED testing through its Pearson Testing Center as well as offering the Constitution test on paper for candidates.

Highlights of the 2013-2014 GED Testing Program include:

- First Time Testers/Unique Testers – 2,036
- Certified – 1,403
- Retest – 8,532 approximately
- Certificate/Transcript/Verification Request - over 1,300

### ***Juvenile Justice Center (105 ILCS 5/14-7.03)***

To guarantee students in juvenile detention continue to be educated and make a successful transition back into their public school program, the Kane County Regional Office of Education runs the Kane County Juvenile Justice Center Education Program. An agreement between the St. Charles School District, the Chief Judge and the Kane County Regional Office of Education makes this possible. Certified teachers give daily instruction year-round in language arts, math, science and social studies. The Education Program Coordinator serves as administrator and communicates with the students' public schools to help with transfers.

### ***Home Schooling (105 ILCS 5/26-1)***

Home schooling in Illinois is considered to be a form of private education. Parents who choose to educate their children at home are under a legal obligation to meet the minimum requirements stated in Illinois' Compulsory Attendance Law (Section 26-1 of the Illinois School Code). Parents who choose to educate their children at home are obligated to teach their children "...the branches of education taught to children of corresponding age and grade in the public schools" and they are further obligated to offer instruction in these core courses in the English language. The "branches of education" include language arts, mathematics, biological and physical sciences, social sciences, fine arts, and physical development and health.

The Regional Office of Education serves as a resource to those parents who are interested in home schooling their children. Information is shared with the parents to assist them. A request is made for parents to register with the Regional Office as a home schooling parent and assure that education is being provided to their children. There are no fees collected for resource information.

### ***Dropout Intervention Program***

The Kane County Dropout Intervention Program completed its 26<sup>th</sup> year in the 2013-2014 school year. This program reaches out to those individuals who have dropped out of school for a variety of reasons. Information is provided to them regarding continuing their education in some manner through returning to school, obtaining a GED or vocational programming.

# Business Office

Contact Person: Meg Fetzer, Director of Finance, [mfetzer@kaneroe.org](mailto:mfetzer@kaneroe.org)

## Budget – County Portion

A portion of the funds for the operating budget of the Kane County Regional Office of Education is provided by the Kane County Government. The salaries for the Regional Superintendent and the Associate Regional Superintendent are paid by the State of Illinois. The majority of funding for the operating budget for the office comes from competitive private, state, and federal grants.

The following budget figures are based on the County's fiscal year, which runs from December 1<sup>st</sup> through November 30<sup>th</sup>.

### Kane County Budget Estimates FY 2013 - 2014

Line Item	FY 2013 Budgeted Amount	FY 2014 Budgeted Amount	Percent of Change
<b>Personnel Services</b>			
Full Time Salaries	\$233,264.00	\$252,717.00	
Benefits	\$41,023.00	\$34,182.00	
<b>Contractual Services</b>			
Public Official Bonding	\$100.00		
Trials & Cost of Hearings	\$50.00		
Printing - Legal	\$50.00		
Printing - General	\$100.00		
Consulting	\$3,500.00	\$3,500.00	
Software - licensing	\$5,000.00	\$5,000.00	
Conference & Meetings	\$3,100.00	\$3,500.00	
Employee Training			
Mileage Expense	\$1,100.00	\$1,120.00	
Association Dues	\$1,550.00	\$2,000.00	
<b>Commodities</b>			
Office Supplies	\$1,500.00	\$750.00	
Data Processing			
Supplies		\$1,000.00	
Books & Subscriptions			
Operating Supplies	\$955.00	\$705.00	
<b>Totals</b>	<u>\$291,292.00</u>	<u>\$304,474.00</u>	4.53%

**Institute Fund Report (105 ILCS 5/3-12)**

All certificate registration fees and a portion of renewal and duplicate fees are to be kept by the Regional Superintendent and deposited into the institute fund. The expenditure of these funds is very restricted and is used to defray expenses incidental to teachers' institutes, workshops, or meetings of a professional nature that are designed to promote the professional growth of teachers, or of any general or special meeting of teachers or school personnel of the region, which has been approved by the Regional Superintendent.

**INSTITUTE FUND FINANCIAL REPORT  
JULY 1, 2013 THRU JUNE 30, 2014**

Unaudited

<b>BEGINNING FUND BALANCE, JULY 1, 2013</b>		<b>850,864.88</b>
<b>RECEIPTS</b>		
CERTIFICATE REGISTRATIONS	135,781.00	
MULTI-YEAR REGISTRATIONS	0.00	
REGISTRATION RENEWALS-PAST YEAR	0.00	
DUPLICATE CERTIFICATES	0.00	
INTEREST	702.85	
EDUCATOR OF THE YEAR	14,032.00	
REFUNDS & ADJUSTMENTS	(100.00)	
<b>TOTAL RECEIPTS</b>	<b>150,415.85</b>	
<b>DISBURSEMENTS</b>		
OTHER PURCHASED SERVICES	12,836.92	
OPERATING EXPENSE	5,224.92	
PROFESSIONAL & TECHNICAL SERVICES	63,147.04	
<b>TOTAL DISBURSEMENTS</b>	<b>81,208.88</b>	<b>69,206.97</b>
<b>ENDING FUND BALANCE, JUNE 30, 2014</b>		<b>920,071.85</b>

## Certification (105 ILCS 5/21)

---

Contact Person: *Paige McNulty, Assistant Superintendent, [pmcnulty@kaneroe.org](mailto:pmcnulty@kaneroe.org)*

The Kane County Regional Office of Education Licensure Department serves teachers and administrators with all aspects of their credential needs. The office provides instructions on how to access the Educators Licensure Information System (ELIS). The office gives information on how to apply for licenses, endorsements, approvals; how to register and renew licenses; and how to enter professional development credit hours using ELIS. The Licensure Department also answers many questions via email and phone.

The Kane County ROE tested 64 Paraprofessionals so they can obtain their NCLB Paraprofessional Approval.

The Kane County ROE hosts and maintains the Kane County Human Resource Consortium online teacher application and vacancy system for all Kane County public school districts. There were more than 9,000 active applications in the KCHRC system in 2013-2014.



# Homeless Education Program

---

Contact Person: Paige McNulty, Assistant Superintendent, [pmcnulty@kaneroe.org](mailto:pmcnulty@kaneroe.org)

## **Kane County ROE Equal Chance Program**

*(Federal, Subtitle B of Title VII, McKinney-Vento Homeless Assistance Act 42 U.S.C. 11431 et seq)*

Homeless children and youth face numerous obstacles in obtaining an education. All children including homeless are entitled to a free public education. The goal of the Kane County Homeless Education Program is to assist the Kane County school districts to ensure equal educational access for all homeless children and youth, including preschoolers, so that each student will have the opportunity to succeed in school programs and meet the same challenging state standards to which all students are held. The federal McKinney-Vento Act requires school districts to be proactive in finding homeless children who are not attending school and identifying which children and youth are homeless.

The Kane County ROE Equal Chance Program McKinney/Vento Program assists Kane County School Districts by;

- Provide McKinney/Vento training to administrators, school staff, social service agencies and community agency staff
- Providing outreach and materials to all public schools and agencies in Kane County
- Facilitating weekly parent meetings at shelters
- Collaborating with ROE Youth Outreach Workers and Safe Schools Facilitators
- Providing direct and supportive assistance to families/youth in need
- Assist High School Juniors and Seniors with college planning, applications, scholarships, FAFSA
- Data collection

For the 2013-2014 school year the ROE Equal Chance Program provided:

- Technical assistance to all 9 Kane County School District Liaisons
- 15 trainings to all school staffs including and 3 social service agencies
- 9 Administrators' Academies
- Collaborated with members of 16<sup>th</sup> Judicial Family Violence Court Council to provide an Administrator Academy and Institute Day offering on The Impact of Violence on Education and Mandated Reporting
- Facilitated 40 parent meetings
- Met with 55 students several times throughout the year to offer supportive services
- Assisted 22 students to complete FAFSA
- Weekly meetings/workshops with Community Crisis Center Clients
- Collaborated with ECC, U-46, D300, Community Crisis Center for the 4<sup>th</sup> Annual Project Backpack Back To School Fair in distributing 2,500 backpacks filled with school supplies
- and attended by 33 social service agencies
- Distributed Christmas Gifts donated by churches, Renaissance Foundation and Kane ROE to 250 children
- Distributed 50 Thanksgiving and Easter food baskets to Kane County families
- Facilitated tutoring for 19 homeless students in Kane County
- Partnered with U-46, D300, and Elgin YWCA for 5<sup>th</sup> annual *Cinderella's Closet* to provide prom dresses for Kane County students in need

Affiliations 2013/2014 School Year

- Attends and is on the Board, Steering Committee and Ranking Committee of the Kane County Continuum of Care
- Area Planning Meeting Committee member
- Member of and attended monthly meetings for the 16<sup>th</sup> Judicial Family Violence Coordinating Council

This program is administered by the Area One Lead Program and funded by a subgrant from the Illinois State Board of Education through the McKinney –Vento Homeless Assistance Act of 2001.

For the 2013-2014 school year, school districts in Kane County served and reported 2040 homeless students.

## Networks

---

Networks provide mutual assistance and support that facilitates sharing of information and services among individuals and groups. Constant feedback and strong participation indicate that networks are serving the nine Kane County school districts and their staffs well through sharing of best practices, working together to solve common problems, and providing savings through collaborative program development. Collaborative professional development opportunities are regularly developed, like the annual countywide institute day, resulting in saving precious budget dollars.

The networks are prominently mentioned as a benefit for new members as they gain expertise from experienced colleagues throughout the region. Regional Office of Education leadership also participates in area and statewide networks like regional superintendents, administrators' academy coordinators, professional development directors, safe school directors and technology directors.

The ROE has established the following networks with the nine K-12 school districts in its jurisdiction:

- Superintendents
- High School Principals
- Kane County Learning Leaders (directors of curriculum and instruction)
- Kane County Human Resources Consortium (human resources directors)
- Facilities Managers
- Gifted Education Directors
- Northern Illinois Association w/ Special Education Directors
- Reading Leaders
- School Safety/Security Team
- School Health/Wellness Team
- Special Education Directors
- Technology Directors
- Transportation Directors
- Transportation Routers

## Partnerships

---

### ***Kane County Human Resource Consortium (KCHRC)***

The Kane County Human Resource Consortium (KCHRC), formed in 2002, is a cooperative effort among the nine public K-12 school districts and the Regional Office of Education in Kane County, Illinois. The KCHRC is dedicated to the recruitment, selection, and professional growth of quality educators. The consortium has created a single online application process allowing applicants to submit a teaching application to all nine districts simultaneously. Kane County school administrators are trained to utilize the system in the hiring of all certified teachers. District human resources directors meet twice a month with the ROE for planning and professional development. More information can be found at [www.teachinkane.org](http://www.teachinkane.org)

### ***Online Classes/Graduate Classes***

The Kane County Regional Office of Education, Aurora University and ASCD collaborated to develop and provide an online class for the teachers in Kane County. These classes are intentionally structured so the skills and knowledge the teachers learn can immediately be applied to the classrooms. Many graduate courses are hosted at the ROE throughout the year in evenings and/or on weekends and offered for graduate credit hours. Online classes are offered for graduate credits or professional development clock hours.

### ***Operation Snowball***

Greater Fox River Valley Operation Snowball (GFRVOS) is a community-based alcohol, tobacco, and drug use prevention program focusing on leadership development to empower youth to lead drug-free lives. The name originates from the idea that "If I can have a positive impact on you, you can have a positive impact on someone else and the effect snowballs." Out of this concept emerges "A Community of Caring" - the success of Operation Snowball.

Operation Snowball seeks to bring together high school youth and caring adults to develop trusting relationships. It is founded on the belief that youth and adults can make responsible decisions when provided with factual information and an opportunity to develop an understanding of one's self and others.

Currently there are 12 participating high schools within Kane County. The group meets at the ROE weekly during the evening. Twice during the year they hold a weekend event which draws 150 student attendees.

### ***Strategic Planning***

The Kane County Regional Office of Education has developed a three-year strategic plan during FY13. Engaging a wide base of stakeholders, teams developed four “pillars” about which goals and objectives were refined. The areas of emphasis are Professional Development, Alternative Learning Programs, Communications/Partnerships, and Resources. We continue to review and update this plan with our stakeholders.

### ***Spelling Bee***

In cooperation with the Scripps National Spelling Bee and our local sponsor, the Kane County Chronicle, the Kane County ROE is proud to coordinate the spelling bee for our Kane County public and non-public schools. At the beginning of each school year, all schools that register with Scripps to participate have individual school spelling bees. The winners’ names are reported to the Kane County Regional Office of Education. The regional Spelling Bees are scheduled to take place in February. The winners from the regional bees have a final competition in March before one winner from Kane County proceeds to the Scripps National Spelling Bee in Washington D.C. in May. The local and regional spelling bees are coordinated and funded by the Regional Office of Education.

### ***Association for Individual Development (AID)***

The Association for Individual Development serves physically and mentally handicapped individuals within the region and beyond. The Kane County ROE hosts their regularly scheduled board meetings.

## Professional Development (105 ILCS 5/3-14.6-9)

---

Contact Person: Shirley LeClere, Director of Professional Development, [sleclere@kaneroe.org](mailto:sleclere@kaneroe.org)

The Regional Office of Education facilitates and works collaboratively with teachers and leaders to guide their continuous instructional improvements through professional development opportunities. Our office establishes educational partnerships that offer best practices for enhancing student achievement.

The Regional Office of Education supports a wide variety of activities including institutes, workshops, conferences, networking, technical assistance, information dissemination, and consulting to meet the needs of our schools. These activities are designed to complement the other Kane County Regional Office of Education and district professional development programs. Our office collaborates with local, regional, and state educational partners representing both the public and private sector to create learning opportunities for the entire Kane County learning community.

Illinois CSI, in collaboration with the Regional Office of Education & ISC's, and Illinois State Board of Education offer Foundational Services for all Illinois Districts.

Foundational Services provide districts with support in continuous improvement planning. Support is provided in the form of online resources and professional development delivered by ROEs & ISCs. Professional development events take place across the state.

### ***Illinois Administrators' Academy (105 ILCS 5/2-3.53)***

The purpose of the academy is to maintain a statewide, regionally-based network that provides opportunities for mandated professional development for school administrators. The academy provides high-quality training on the evaluation of certified personnel, school improvement, school accountability, public relations, communications, and pertinent leadership education relating to student growth, student achievement and school operations. By statute, every administrator must complete a minimum of one approved academy annually and a minimum of five in each administrator certificate renewal period. In conjunction with local districts, other regional offices, statewide education-related professional organizations, and approved third-party providers; the Kane County Regional Office of Education provides a comprehensive selection of Academy programs.

#### **Administrators' Academy Offerings**

- Administrator Walk-throughs for Evaluating Reading/Common Core Standards
- Avoiding Due Process: Tips from the Trenches
- Effective Presentations for 21<sup>st</sup> Century School Leaders
- Developing Academic Thinking & Character Skills for 21<sup>st</sup> Century Schools
- Gathering Evidence During Observations & Conferencing Using the Danielson Module
- Improving Instruction through Effective Hiring Practices
- Recognizing and Assisting Homeless Students: What Administrators Need to Know
- Student Behavioral Threat Assessments (Grade P-12)
- Teacher Evaluator Competency Skill Building for Pre-Qualified Teacher Evaluators-Part 1 & 2
- Train-the-Trainer Multi-Hazard Emergency Planning for Illinois Schools

## ***Institute Day (105 ILCS 5/3-11)***

The Kane County Regional Office of Education coordinates and sponsors a countywide institute day of learning for all educators throughout the county on the last Friday in February. Teachers, paraprofessionals, health professionals and other support staff are able to select workshops of interest to attend. Participants have access to the latest research-based practices and acquire new ideas and knowledge to help facilitate their work in teaching and learning.

### **Institute Offerings**

- Assessment and the Common Core
- Authentic Assessment Using the Teaching Strategies GOLD Online Assessment Tool
- Autism Spectrum Disorders and Evidence Based Practices
- Building Partnerships for America's Future
- CCSS - Writing for ELA Anchor #2: Informative/Explanatory Writing
- Children: The Silent Victims of Domestic Violence
- Close Reading of Informational Texts in Grades 3-8
- Common Core-Elation, in a creek near you
- Complex Students and Nursing Interventions; Finding the Silver Lining through Awareness, Acknowledgement and Action.
- Comprehension Interventions to Support Reading Improvement
- Connecting Comprehension and Technology
- Creating Effective Assessments
- Creating Effective Assessments
- Data is Analyzed:Now What?- Meeting the Needs of All Learners
- Differentiated Grading: Fair Isn't Always Equal
- Dupage/Kane County Library Institute Day
- Enhancing Adolescents' Motivation for Science
- Enhancing Physical Education in Kane County
- Financial Fitness for Life
- Freeman County Institute Day
- Get Real: Getting Kids Excited about Non-Fiction
- Instruction That Works
- Instrumental Innovations Workshop
- iPad Bootcamp
- Learning Focused Supervision- Developing Professional Expertise in Standards-Driven Systems
- Microsoft Certiport Training
- Prentice Hall Literature: Problem Solving, Technology and Lesson Design
- Professional Learning Day at IMSA: Math, Science, Technology and the Common Core!
- Providing a School Environment of Positive Behavior Support for All Students
- Research Gathering for Contemporary vs. Historical Artist and Contemporary Art Concepts
- Scantron Achievement Series: Creating Items and Tests
- Shared Inquiry in Your Classroom
- Steam with STEM - It's What's Hot In The Classroom.
- Technology Bootcamp
- Technology Tools to Enhance Student Learning
- The Nurtured Heart Approach for Educators
- The Nuts & Bolts of PLCs: Why All the Fuss About Collaboration
- Understanding Autism - Supports and Strategies
- Why People Die by Suicide: What School Professionals Need to Know
- Woodworking Teachers Update Conference

## ***Other Professional Development Offerings***

### Educational Strategies and General

- Overview of Student Growth Models

### ETC and Career Awareness

- Middle School Mission & Methods (EDU 5440)
- Adolescent Development & Learning (EDU 5370)
- Gifted Education Seminar (OEDS 5143)

### Language Arts/Reading/Writing

- Using the Danielson Framework for Teaching in the IL Teacher Practice Evaluation Process
- Learning Leaders Network Meetings
- Reading Leaders Network Meetings
- Steve Layne's Top Five Writing Tips

### Math/Science/Social Studies

- ISBE Fall Regional Math Common Core Conference
- Moving Ahead with the Common Core Math Standards
- ELA Core Curriculum Standards
- Dan Meyer's Perplexity Session for Middle & High School Teachers
- Connecting NGSS & Social Studies Framework to the CCSS in Literacy
- Next Generation Science Standards: An Introduction

## **Gifted Education Seminar**

The Kane County Regional Office of Education has developed and supported an ongoing gifted networking system for districts serving gifted and talented students. Teachers of gifted and talented students meet frequently throughout the school year at the ROE to share expertise and resources. The ROE hosts gifted training seminars for teachers throughout the school year and during the summer.

The seminar requires teachers to meet for six days (45 hours) to deepen their understanding of how to teach and reach gifted and talented students. The goal is to assist teachers in creating an environment that identifies gifted and talented students, addresses diverse needs, and measures student growth in the classroom. During the 2013-2014 school year, two Gifted Education Seminars were offered throughout Kane County for 45 teachers.

## **Educator of the Year Awards**

The 39<sup>th</sup> Annual Educator of the Year Awards Banquet was held at the Q Center in St. Charles on May 2, 2014. This awards banquet provides an opportunity to honor outstanding members of the education profession in Kane County and promote awareness of the quality education being provided in our schools. Special recognition is also given to those retiring from education.

Local nominating committees consisting of teachers and administrators nominate educators throughout the county. Those nominated are seen as having the respect and admiration of students, parents, and co-workers. They play active and useful roles in their communities and schools, often distinguishing themselves as leaders.

Those honored represent the dedicated service found in all of the staff throughout Kane County. This program has received enthusiastic support from regional educators, and several Kane County award recipients have been selected by the Illinois State Board of Education as outstanding teachers in Illinois.

The dinner honored 30 distinguished educators with plaques of recognition. Those who received awards of distinction were:

<u>Award</u>	<u>Name</u>	<u>District</u>
Educator of the Year	Carol A. Mertes	District 131
Elementary Educator of the Year	Kathleen Theresa Bujak	District 300
Middle School Educator of the Year	Edward Johnson Jr.	District 131
High School Educator of the Year	Ame Kazmer	District 304
Regional Superintendent Award	Kelly Lynn Uehlein	District 300
Administrator of the Year	Dr. Stephanie Ramstad	District 300
Student Support Personnel Award	Mary Ellen Adkins	District 101
Educational Service Personnel Award	Julio Rubieles	District 303



## School Safety & Security (105 ILCS 5/3-14.20)

---

Contact Person: Phil Morris, Director of Technology, [pmorris@kaneroe.org](mailto:pmorris@kaneroe.org)

### **Health and Life Safety**

All public school buildings and school-related buildings, including temporary/mobile classrooms, in the Kane County Regional Office of Education jurisdiction are inspected annually to assure compliance with the standards necessary to ensure the health and safety of public school students in Illinois, according to “Building Specifications for Health and Safety in Public Schools.” In 2013-2014 the ROE completed 318 HLS inspections. Annual inspection results from each building are available at the ROE. As required by law, a record of the annual inspection is sent to the president of the school board and a summary is filed annually with the State Board of Education. In addition, results from required State Fire Marshall inspections are reported through the ROE to the school districts and the state.

Every 10 years, each public building must be resurveyed for continued compliance by an architect or engineer licensed in the State of Illinois. The “Safety Survey Report” lists any items necessary to bring the building into full and continual compliance. Upon completion of outlined work, compliance is verified by the district and a licensed architect or engineer in a report filed with the ROE, and the building is awarded a certificate of compliance.

The ROE is also responsible, through the Regional Superintendent of Schools, for statutory compliance with established standards in the construction, remodeling and demolition of public school buildings. The Regional Superintendent assures school board approval of construction plans, review of construction plans for code compliance, issuance of the building permit, and upon review, issuance of school occupancy permits. Furthermore, the Regional Superintendent assures code compliance for temporary/mobile classroom units throughout the region in cooperation with licensed architects or engineers retained by local school districts. Records of all amendments and construction information are kept on file at the ROE.

### **School Health/Wellness Team**

Since early 2009, the school health/wellness team network, with representation from the nine public school districts, the ROE and guests from the Kane County Health Department has met monthly during the school year to review health and wellness issues. Representatives share problems, possible solutions and resources, as well as successes. Initially the network focused on identifying and listing the many different programs in the districts that impact the health and wellness of students and staff. The existence of the health/wellness team network was very helpful when concern about the H1N1 Virus, commonly known as the “Swine Flu” emerged. The network also spent time discussing and brainstorming about involvement in the Kane County “Fit Kids 2020” program.

## School Safety & Security Team

*“Children  
can’t learn if  
they are  
worried about  
their safety.”*

*~ Laura Bush*

Beginning in September 2007, the school safety/security team network, with representation from the nine public school districts and the ROE have met monthly during the school year to review school safety - security issues, plans, procedures and practices. Representatives share successes, problems, possible solutions and resources. Outside resources, including IMSA, County Emergency & Management Association County Sherriff’s Department, local police, local fire, the FBI, and security consulting firms have been utilized to foster knowledge and understanding of safety issues. The network focuses on making sure all students and staff members are prepared for emergency situations. The safety/security network stresses that law enforcement first responders and the administration of all schools must collaborate to prepare and practice for emergency situations. Training has been provided to address awareness and prevention practices of school safety issues.

## Facility Managers Network

The State of Illinois has designated the Regional Office of Education as the Authority Having Jurisdiction (AHJ) over public schools in regard to Health/Life Safety. Regional Offices of Education have the authority and responsibility to inspect school construction and building/facility maintenance to assure that those facilities are safe and secure for school children and staff.

The Kane County Facility Managers Network was created in September 2008 to foster communication, cooperation and collaboration among the nine school districts and the Regional Office of Education. Attendees include school district facility managers, school district construction projects managers, architects, consultants and ROE staff. Meetings assist participants to be prepared to assure that construction projects meet all relevant codes prior to application for occupancy. The ROE conducts annual HLS inspections with facility managers and principals to assure that the maintenance of all school buildings and facilities meets code and provides a safe and secure surrounding for children and staff. All have an opportunity to learn what others are doing and participants may share procedures, resources, and successes in their districts.

# Technology

---

Contact Person: Phil Morris, Director of Technology, [pmorris@kaneroe.org](mailto:pmorris@kaneroe.org)

## ***Area One West Learning Technology Center (105 ILCS 5/2-3.117)***

The Illinois State Board of Education (ISBE) established the Learning Technology Center program for the purpose of providing coordinated, statewide support and infrastructure that assists school districts in planning for, implementing, assessing results and educating school staff in the use of technology and telecommunications in curricular, instructional and administrative functions. More information on the Learning Technology Center program can be found at <http://www.isbe.net/curriculum/elearning/default.htm>.

The Kane County Learning Technology Center has provided the following services using funding from the ISBE.

- Acted as Area One Lead representing Lake, Cook, DuPage, Kane, Will, Grundy, and Kendall Counties
- Attending statewide meetings
- Facilitated or assisted schools with Technology Planning
- Assisted districts with funding and training for reading/math initiatives using technology
- Provide support for internet safety training.
- Help schools with the monitoring, management, and troubleshooting of their WANs
- Assist schools with E-Rate applications to the federal government (<http://www.sl.universalservice.org>)
- Provide support and training for online resources available to all Kane County schools.

## ***Fingerprinting (105 ILCS 5/10-21.9)***

The Regional Office of Education provides fingerprinting services for all our public school districts. The Illinois School Code requires all new employees to have both a State and FBI criminal background check. Last year, approximately 3,950 people were fingerprinted. In 2008, the addition of private schools occurred due to changing legislation. The electronic submission of fingerprints allows the ROE to typically receive results within 24 hours, so a school district can begin employment immediately.

The ROE also partners with Kane County government to fingerprint their new employees throughout the year.

### ***Geographic Information System (GIS) (105 ILCS 5/7-6)***

The Kane County Regional Office of Education offers school districts the opportunity to request the assistance of its geographic information system (GIS). The GIS allows for the creation of custom maps and geographic analyses for school districts. GIS has proven to be a useful tool for Kane County school districts in the matter of attendance boundaries.

The software allows a school district to calculate student populations in a geographic area. Attendance areas can be broken down, allowing for smaller geographic units of measurement and the presentation of a variety of school boundary scenarios. GIS allows school districts to create and take advantage of updatable maps to address geographic concerns. Some transportation concerns such as bus routes, bus stops, and hazardous roads can be represented in the GIS.

### ***Learning Technology Services (105 ILCS 5/2-3.118)***

In addition to being the Area One West Learning Technology Center, the Regional Office of Education integrates support and training in many areas of technology. A needs assessment is given during the year at monthly technology coordinator meetings. Monthly technology coordinator meetings are used to communicate information from the Illinois State Board of Education, and also allow dialogue between districts.

Learning Technology Services also provides technical support within the Regional Office of Education to maintain connectivity to the Illinois State Board of Education electronic systems including Teacher Certification, Administrators' Academy, and GED. Learning Technology Services supports the technology implementation at the Kane County Juvenile Justice Center (JJC).

During this past year the following services have been provided:

- Online registration for workshops with digital encryption
- Consultation for KCHRC On-Line Application
- Maintenance of LiveScan fingerprint equipment for fingerprinting of new teachers and bus drivers in Kane County
- Hosting specialized training for school districts
- Continuing support for Follett Destiny
- Coordinating Palo Alto Firewall and Filter cooperative licensing
- Coordinating United Streaming video cooperative licensing
- Maintaining the Kane County ROE website, Facebook fan page, and Twitter pages.
- Assisting SSOS coaches with technology across Kane County
- Support HLS system for school inspections as well as further statewide development
- Provide support for IARSS (Website, Listservs, technical questions)
- Convert from Google Apps Email to Microsoft Office365

Phil Morris, Director is also on Illinois Learning Technology Purchase Program Advisory Board, Illinois Virtual School Advisory Board, and the IlliniCloud Advisory Board.

# Transportation

---

Contact Person: *Paige McNulty, Assistant Superintendent, [pmcnulty@kaneroe.org](mailto:pmcnulty@kaneroe.org)*

## ***School Bus Driver Trainings (105 ILCS 5/3-14.23)***

The Regional Office of Education is responsible for conducting the initial training that is required for all new school bus drivers prior to getting a bus permit, and the annual refresher workshop that is required in the 12-month period prior to renewing a school bus permit. Experienced drivers must take a two-hour refresher course annually, and all new drivers must take an eight-hour course in school bus driver safety and first aid, as prescribed by the Illinois State Board of Education and administered by the Kane County ROE.

The Kane County ROE provided nine Initial Bus Driver Training courses for 144 participants and 50 Refresher Trainings for 1,263 participants.

# Finance Reports

Contact Person: Meg Fetzer, Director of Finance, mfetzer@kaneroe.org

## Certified Personnel

DEGREES - SALARIES - EXPERIENCE - STAFF/STUDENT RATIOS								
DISTRICT	TOTAL	DOCTORS & ED SPEC/CAS DEGREE	MASTERS DEGREE	BACHELORS DEGREE	TEACHERS AIDES (INCLUDE PART TIME)	AVG. SAL. FULL-TIME CERTIFIED TEACHERS	AVG. SAL. CERTIFIED ADMIN	
	CERTIFIED (INCLUDE PART TIME)							
U46 ELGIN	2380	37	1865	478	378	\$61,839	\$100,254	
101 BATAVIA	459	9	362	88	124	\$74,841	\$100,557	
129 AURORA WEST	916	10	748	158	250	\$72,428	\$103,401	
131 AURORA EAST	944	19	569	356	207	\$51,886	\$89,483	
300 DUNDEE	1442	44	998	400	354	\$47,810	\$98,306	
301 CENTRAL	250	9	175	66	58	\$56,109	\$99,118	
302 KANELAND	359	4	267	88	86	\$58,179	\$95,867	
303 ST CHARLES	1079	34	878	167	186	\$69,508	\$112,699	
304 GENEVA	460	17	359	84	147	\$68,778	\$107,259	
<b>TOTAL FY2014</b>	<b>8289</b>	<b>183</b>	<b>6221</b>	<b>1885</b>	<b>1790</b>	<b>\$62,375</b>	<b>\$100,772</b>	
		2.21%	75.05%	22.74%	21.59%			
<b>TOTAL FY2013</b>	<b>8282</b>	<b>192</b>	<b>6201</b>	<b>1889</b>	<b>1390</b>	<b>\$62,625</b>	<b>\$101,695</b>	
		2.32%	74.87%	22.81%	16.78%			

**Certified Personnel Continued**

DISTRICT	AVG. YRS. EXPERIENCE TEACHING IN ILLINOIS	ENROLLMENT PER CERTIFIED STAFF MEMBER FY2014	ENROLLMENT PER CERTIFIED STAFF MEMBER FY2013	TEACHER TO ADMINISTRATIVE STAFF RATIO	SUPPORT STAFF	ENROLLMENT TO SUPPORT STAFF RATIO	ENROLLMENT PER FALL HOUSING RPT FY2013
<b>U46 ELGIN</b>	12.0	17.0	16.5	14.2	2,111	19.1	40,375
<b>101 BATAVIA</b>	13.0	13.4	13.5	19.9	104	58.9	6,129
<b>129 AURORA WEST</b>	11.0	14.0	13.8	15.7	280	45.7	12,804
<b>131 AURORA EAST</b>	8.9	15.3	14.4	17.2	109	132.5	14,444
<b>300 DUNDEE</b>	12.0	14.4	15.6	14.2	242	85.8	20,757
<b>301 CENTRAL</b>	12.2	14.2	13.0	18.2	181	19.7	3,561
<b>302 KANELAND</b>	9.3	12.8	13.0	14.6	199	23.1	4,603
<b>303 ST CHARLES</b>	12.4	12.3	12.9	18.3	408	32.5	13,271
<b>304 GENEVA</b>	11.0	12.7	13.2	17.5	223	26.2	5,841
<b>AVERAGE</b>	<b>11.3</b>	<b>14.0</b>	<b>14.0</b>	<b>16.6</b>	<b>3,857</b>	<b>49.3</b>	<b>121,785</b>
<b>PRIOR YEAR</b>	<b>11.9</b>	<b>14.0</b>	<b>14.3</b>	<b>16.2</b>	<b>3,988</b>	<b>52.4</b>	<b>121,944</b>

**Classroom Buildings In Use- July 1, 2013 – June 30, 2014**

CLASSROOM BUILDINGS IN USE - 7/1/13-6/30/14

DISTRICT		Elementary School		Middle or Junior High School		Senior High School		Mobile Classroom		Other, Special Ed, Voc Ed, Etc.	
		<u>FY 14</u>	<u>FY 13</u>	<u>FY 14</u>	<u>FY 13</u>	<u>FY 14</u>	<u>FY 13</u>	<u>FY 14</u>	<u>FY 13</u>	<u>FY 14</u>	<u>FY 13</u>
		U46	ELGIN	40	40	8	8	5	5	29	29
101	BATAVIA	6	6	1	1	1	1	0	0	0	0
129	AURORA WEST	10	10	4	4	1	1	5	6	3	2
131	AURORA EAST	12	12	4	3	1	1	0	0	2	3
300	DUNDEE	15	16	5	4	3	3	0	1	4	3
301	CENTRAL	4	4	2	2	1	1	0	0	0	0
302	KANELAND	4	4	1	1	1	1	0	0	1	1
303	ST CHARLES	12	12	3	3	2	2	6	6	0	1
304	GENEVA	6	6	2	2	1	1	0	0	1	1
<b>TOTAL</b>		<b>109</b>	<b>110</b>	<b>30</b>	<b>28</b>	<b>16</b>	<b>16</b>	<b>40</b>	<b>42</b>	<b>16</b>	<b>16</b>

**Public School Enrollment – September 2013**

FY14 Enrollment  
Enrollment - Public Schools - September 2013

District	School	FY13	FY14	Pre-K	K-5	6-8	9-12
U46	Elgin	40,199	40,375	1,147	18,317	8,890	12,021
101	Batavia	6,227	6,129	83	2,643	1,458	1,945
129	West Aurora	12,580	12,804	368	5,686	2,989	3,761
131	East Aurora	14,461	14,444	722	7,051	3,118	3,553
300	Dundee	20,673	20,757	750	9,243	4,705	6,059
301	Central	3,519	3,561	64	1,667	781	1,049
302	Kaneland	4,777	4,603	45	2,156	1,068	1,334
303	St. Charles	13,414	13,271	212	5,282	3,255	4,522
304	Geneva	5,906	5,841	72	2,353	1,445	1,971
<b>TOTAL FY14</b>			<b>121,785</b>	<b>3,463</b>	<b>54,398</b>	<b>27,709</b>	<b>36,215</b>
<b>TOTAL FY13</b>		<b>121,756</b>		<b>3,401</b>	<b>54,710</b>	<b>27,656</b>	<b>35,989</b>



**ISBE Federal & State Revenue – Fiscal Year Ending June 30, 2014**

**ISBE FEDERAL & STATE REVENUE  
FISCAL YEAR ENDING JUNE 30, 2014**

		<b>STATE AID *</b>	<b>STATE - OTHER</b>	<b>FEDERAL</b>	<b>TOTAL</b>	<b>\$ PER ADA</b>	<b>ADA</b>
U46	ELGIN	90,443,606	36,014,949	29,362,385	155,820,940	4,369	35668.5
101	BATAVIA	2,705,848	5,188,710	605,927	8,500,485	1,448	5,869.6
129	AURORA WEST	32,709,122	11,983,650	10,284,856	54,977,628	4,558	12,060.5
131	AURORA EAST	83,378,197	13,522,537	14,822,786	111,723,520	8,943	12,493.2
300	DUNDEE	16,089,549	16,720,025	10,901,321	43,710,895	2,354	18,565.8
301	CENTRAL	1,390,023	2,964,856	384,709	4,739,588	1,482	3,197.5
302	KANELAND	2,678,461	5,162,785	549,295	8,390,541	1,992	4,211.5
303	ST CHARLES	5,034,171	9,888,570	1,607,288	16,530,029	1,363	12,130.4
304	GENEVA	2,090,081	3,967,253	237,882	6,295,216	1,179	5,337.5
							109534.6
	<b>TOTAL FY2014</b>	<b>236,519,058</b>	<b>105,413,335</b>	<b>68,756,449</b>	<b>410,688,842</b>	<b>3,749</b>	
	<b>TOTAL FY2013</b>	<b>200,377,611</b>	<b>103,561,645</b>	<b>68,265,986</b>	<b>372,205,241</b>	<b>3,383</b>	
	<b>CHANGE</b>	<b>15.3%</b>	<b>1.8%</b>	<b>0.7%</b>	<b>9.4%</b>	<b>9.8%</b>	

**\*\* Additional Financial and District information may be obtained at [www.isbe.net](http://www.isbe.net)**

## FY14 Annual Report Index

<p><b>A</b></p> <p>Area One West Learning Technology Center ...26</p> <p>Association for Individual Development (AID) .19</p> <p><b>B</b></p> <p>Budget – County Portion .....13</p> <p>Business Office .....13</p> <p><b>C</b></p> <p>Certification .....15</p> <p>Certified Personnel.....29</p> <p><b>D</b></p> <p>Dropout Intervention Program.....12</p> <p><b>E</b></p> <p>Educator of the Year Awards.....23</p> <p><b>F</b></p> <p>Facility Managers’ Network.....25</p> <p>Finance Reports.....29</p> <p>Fingerprinting .....26</p> <p><b>G</b></p> <p>General Educational Development (GED) .....11</p> <p>Geographic Information System (GIS) .....27</p> <p>Gifted Education Seminar.....23</p> <p><b>H</b></p> <p>Health and Life Safety.....24</p> <p>Home Schooling.....12</p> <p>Homeless Education Program .....16</p> <p><b>I</b></p> <p>Illinois Administrators’ Academy.....20</p> <p>Institute Day .....21</p> <p>Institute Fund Report .....14</p> <p>ISBE Federal &amp; State Revenue .....32</p> <p><b>J</b></p> <p>Juvenile Justice Center .....12</p> <p><b>K</b></p> <p>Kane County Human Resources Consortium (KCHRC) .....18</p>	<p>Kane ROE Equal Chance Program ..... 16</p> <p><b>L</b></p> <p>Learning Technology Services..... 27</p> <p>Legal Reference ..... 7</p> <p>Legislative Development of the Office ..... 7</p> <p><b>M</b></p> <p>Master/Doctorate Degree Programs..... 18</p> <p>Mission ..... 4</p> <p><b>N</b></p> <p>Networks ..... 17</p> <p><b>O</b></p> <p>Operation Snowball ..... 18</p> <p>Organizational Chart..... 6</p> <p>Other Professional Development Offerings .... 22</p> <p><b>P</b></p> <p>Partnerships..... 18</p> <p>Professional Development..... 20</p> <p>Public School Enrollment..... 31</p> <p><b>R</b></p> <p>Regional Board of School Trustees ..... 7</p> <p>Regional Safe Schools Program (RSSP) ..... 11</p> <p>Regional Superintendents of Schools ..... 9</p> <p><b>S</b></p> <p>School Bus Driver Trainings ..... 28</p> <p>School District Boundary Map ..... 5</p> <p>School District Information..... 4</p> <p>School Health/Wellness Team..... 24</p> <p>School Safety &amp; Security..... 24</p> <p>School Safety &amp; Security Team ..... 25</p> <p>Spelling Bee ..... 19</p> <p>Strategic Planning ..... 19</p> <p>Superintendent of Educational Service Region . 8</p> <p><b>T</b></p> <p>Technology ..... 26</p> <p>Transportation ..... 28</p> <p>Tuancy Prevention/Intervention Program ..... 10</p>
-------------------------------------------------------------------------------------------------------------------------------------------------------------------------------------------------------------------------------------------------------------------------------------------------------------------------------------------------------------------------------------------------------------------------------------------------------------------------------------------------------------------------------------------------------------------------------------------------------------------------------------------------------------------------------------------------------------------------------------------------------------------------------------------------------------------------------------------------------------------------------------------------------------------------------------------------------------------------------------------------------------------------------------------------------------------------------------------------------------------------------------------------------------------	--------------------------------------------------------------------------------------------------------------------------------------------------------------------------------------------------------------------------------------------------------------------------------------------------------------------------------------------------------------------------------------------------------------------------------------------------------------------------------------------------------------------------------------------------------------------------------------------------------------------------------------------------------------------------------------------------------------------------------------------------------------------------------------------------------------------------------------------------------------------------------------------------------------------------------------------------------------------------------------------------------------------------------------------------------------------------------------------------------------------------------------------------------------------------------------------------------------------------------------------------------------------------------------------------------------------------------------