

Kane County Regional Office of Education

# Annual Report 2018-2019



REGIONAL OFFICE OF EDUCATION  
KANE COUNTY

Regional Superintendent Patricia Dal Santo • Assistant Regional Superintendent Deanna Oliver  
Kane County Regional Office of Education  
28 N. First Street, Geneva, IL 60134  
P: 630.444.3401 F: 630.208.5115 [www.kaneroe.org](http://www.kaneroe.org)



<b>TABLE OF CONTENTS</b> .....	2
<b>THE MISSION</b> .....	4
<b>KANE COUNTY SCHOOL DISTRICT INFORMATION</b> .....	5
<b>KANE COUNTY SCHOOL DISTRICT BOUNDARY MAP</b> .....	6
<b>KANE COUNTY REGIONAL OFFICE OF EDUCATION</b>	
<b>ORGANIZATIONAL CHART</b> .....	7
<b>LEGISLATIVE</b> .....	8
LEGAL REFERENCE FOR ANNUAL REPORT .....	8
LEGISLATIVE DEVELOPMENT OF THE OFFICE .....	8
REGIONAL BOARD OF SCHOOL TRUSTEES .....	8
SUPERINTENDENT OF EDUCATIONAL SERVICE REGION .....	9
REGIONAL SUPERINTENDENTS OF SCHOOLS .....	9
<b>ALTERNATIVE PROGRAMS</b> .....	11
TRUANCY PREVENTION/INTERVENTION PROGRAM (105 ILCS 5/3-13) .....	11
REGIONAL SAFE SCHOOLS PROGRAM (RSSP) (105 ILCS 5/13 A-8) .....	12
GENERAL EDUCATIONAL DEVELOPMENT (GED) (105 ILCS 5/3-15.12) .....	12
JUVENILE JUSTICE CENTER (105 ILCS 5/14-7.03) .....	13
HOME SCHOOLING (105 ILCS 5/26-1) .....	13
DROPOUT INTERVENTION PROGRAM .....	13
<b>BUSINESS OFFICE</b> .....	15
BUDGET – COUNTY PORTION .....	15
INSTITUTE FUND REPORT (105 ILCS 5/3-12) .....	16
<b>NETWORKS</b> .....	17
<b>PARTNERSHIPS</b> .....	18
KANE COUNTY HUMAN RESOURCE CONSORTIUM (KCHRC) .....	18
OPERATION SNOWBALL .....	18
SPELLING BEE .....	18
<b>PROFESSIONAL DEVELOPMENT (105 ILCS 5/3-14.6-9)</b> .....	19
ILLINOIS ADMINISTRATORS’ ACADEMY (105 ILCS 5/2-3.53) .....	19
INSTITUTE DAY (105 ILCS 5/3-11) .....	20
OTHER PROFESSIONAL DEVELOPMENT OFFERINGS .....	20
<b>EDUCATOR OF THE YEAR AWARDS</b> .....	21
<b>LICENSURE</b> .....	22
<b>TRANSPORTATION</b> .....	22
<b>TECHNOLOGY</b> .....	23
AREA ONE WEST LEARNING TECHNOLOGY CENTER (105 ILCS 5/2-3.117) .....	23
FINGERPRINTING (105 ILCS 5/10-21.9) .....	23
GEOGRAPHIC INFORMATION SYSTEM (GIS) (105 ILCS 5/7-6) .....	23
FACILITY MANAGERS NETWORK .....	23
LEARNING TECHNOLOGY SERVICES (105 ILCS 5/2-3.118) .....	24
HEALTH AND LIFE SAFETY .....	24
SCHOOL SAFETY & SECURITY TEAM .....	25
SCHOOL HEALTH/WELLNESS TEAM .....	26
<b>FINANCE REPORTS</b> .....	27
CERTIFIED PERSONNEL .....	27
CERTIFIED PERSONNEL CONTINUED .....	28
CLASSROOM BUILDINGS IN USE- JULY 1, 2013 – JUNE 30, 2014 .....	29
PUBLIC SCHOOL ENROLLMENT – SEPTEMBER 2013 .....	30
ISBE FEDERAL & STATE REVENUE – FISCAL YEAR ENDING JUNE 30, 2014 .....	31
<b>FY15 ANNUAL REPORT INDEX</b> .....	31



**KANE COUNTY  
REGIONAL OFFICE OF EDUCATION  
FISCAL YEAR 2019 ANNUAL REPORT**

As Superintendent of the Kane County Regional Office of Education, Kane County, Illinois, I hereby submit the annual report of the activities of this office from July 1, 2018 through June 30, 2019.

This report is an overview and is not inclusive of all the services and collaborative partnerships the Regional Office of Education provides as an educational leader for the benefit of the schools and citizens of Kane County. This report uses information from end-of-year reports of our programs and services and from end-of-year school reports from the Illinois State Board of Education website to make this Annual Report as comprehensive as possible. We hope it will help you better understand the work our office and the educators of Kane County provide to ensure our schools are safe and nurturing places of learning where all people, young and old alike, are valued and respected.

Sincerely,

A handwritten signature in black ink that reads "Patricia Dal Santo". The signature is written in a cursive style with a large, flowing "P" and "S".

Patricia Dal Santo  
Regional Superintendent of Schools  
Kane County Regional Office of Education





# THE MISSION

**The mission of the Kane County Regional Office of Education is to advocate for education, provide leadership, perform regulatory functions, and coordinate state and local services for educators, school districts, and the community.**





# OUR KANE COUNTY SCHOOL DISTRICTS



*School District U-46*  
**Mr. Tony Sanders, CEO**  
 355 E. Chicago Street,  
 Elgin, IL 60120  
 Phone: 847-888-5000  
[www.u-46.org](http://www.u-46.org)



*School District 301*  
**Dr. Todd Stirn, Superintendent**  
 275 South Street, Box 396  
 Burlington, IL 60109  
 Phone: 847-464-6005  
[www.central301.net](http://www.central301.net)



*School District 101*  
**Dr. Lisa Hichens, Superintendent**  
 335 W. Wilson Street  
 Batavia, IL 60510  
 Phone: 630-937-8800  
[www.bps101.net](http://www.bps101.net)



*School District 302*  
**Dr. Todd Leden, Superintendent**  
 47W326 Keslinger Road  
 Maple Park, IL 60151  
 Phone: 630-365-5111  
[www.kaneland.org](http://www.kaneland.org)



*School District 129*  
**Dr. Jeff Craig, Superintendent**  
 1877 W. Downer Place  
 Aurora, IL 60506  
 Phone: 630-301-5000  
[www.sd129.org](http://www.sd129.org)



*School District 303*  
**Dr. Jason Pearson, Superintendent**  
 201 S. 7th Street  
 St. Charles, IL 60174  
 Phone: 630-513-3030  
[www.d303.org](http://www.d303.org)



*School District 131*  
**Dr. Jennifer Norrell**  
 417 Fifth Street  
 Aurora, IL 60505  
 Phone: 630-299-5550  
[www.d131.org](http://www.d131.org)



*School District 304*  
**Dr. Kent Mutchler, Superintendent**  
 227 North Fourth Street  
 Geneva, IL 60134  
 Phone: 630-463-3000  
[www.geneva304.org](http://www.geneva304.org)

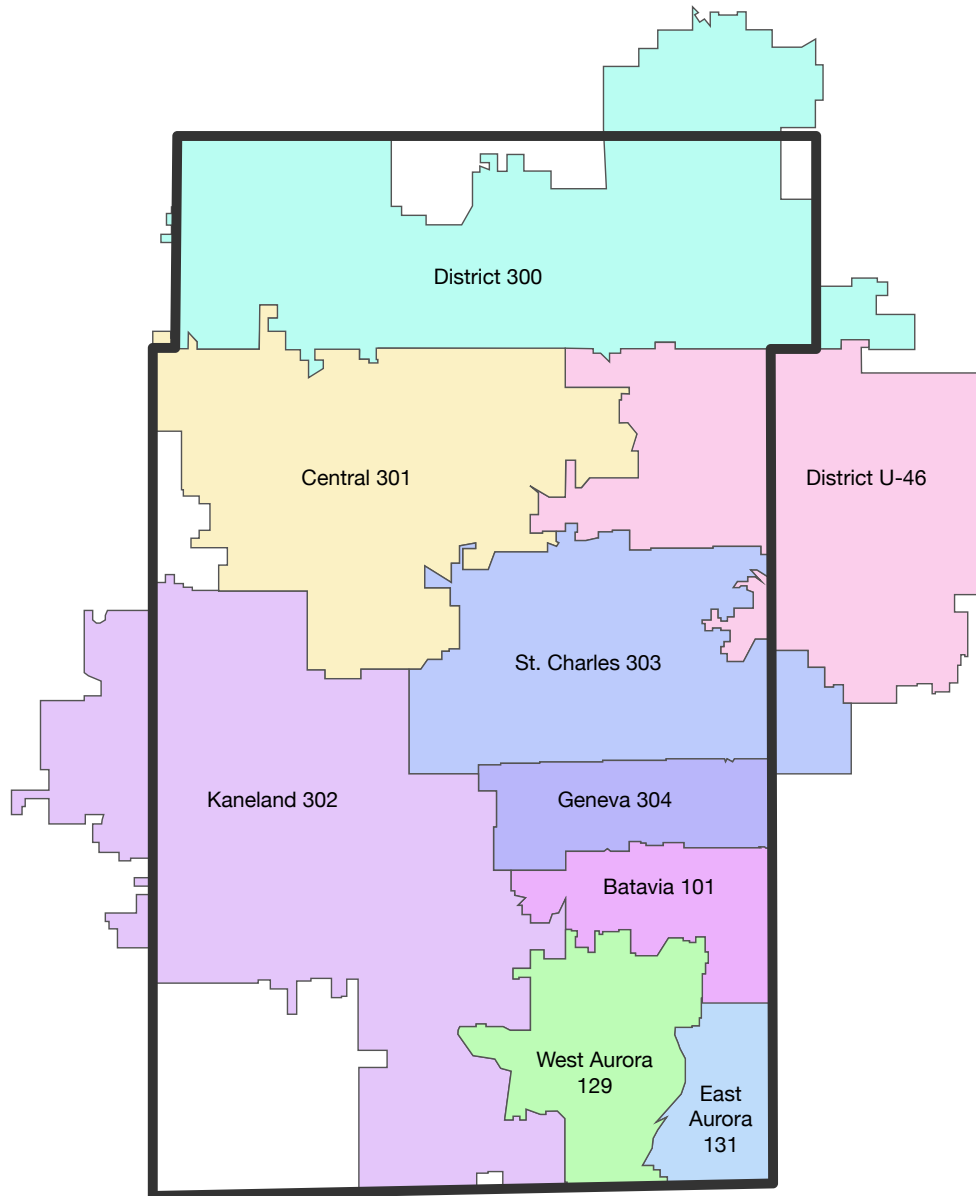


*School District 300*  
**Mr. Fred Heid, Superintendent**  
 300 Cleveland Avenue  
 Carpentersville, IL 60110  
 Phone: 847-426-1300  
[www.d300.org](http://www.d300.org)

**Access the public school  
 directory on the ROE  
 website at:  
<https://bit.ly/2oFny3l>**



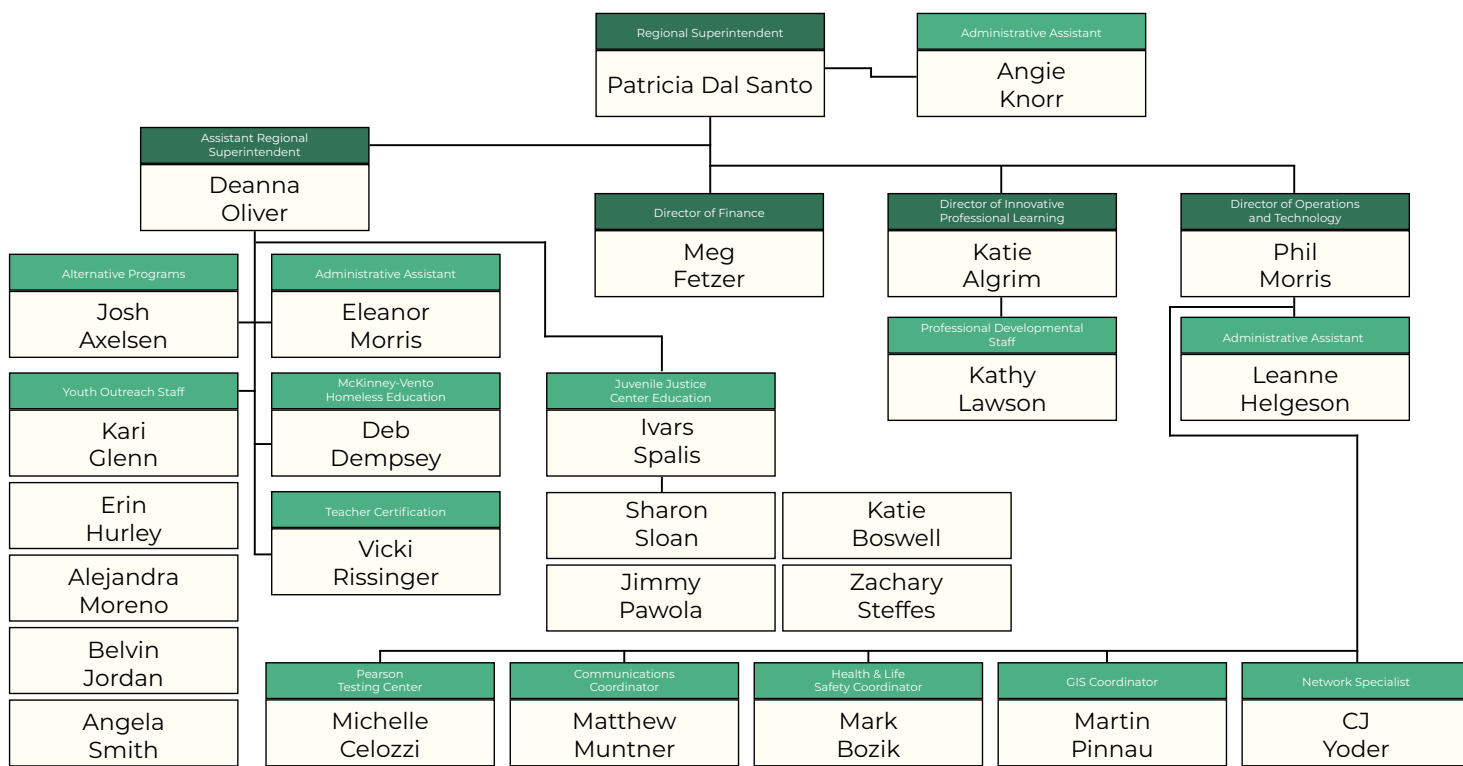
# SCHOOL DISTRICT BOUNDARY MAP



The Regional Office of Education services nine school districts in Kane County. It includes District 300, Central 301, District U-46, St. Charles 303, Kaneland 302, Geneva 304, Batavia 101, West Aurora 129, and East Aurora 131.



# REGIONAL OFFICE OF EDUCATION ORGANIZATIONAL CHART 2018-2019



View the Kane County  
ROE Directory at:  
<https://bit.ly/2mm16eP>



# LEGISLATIVE

Patricia Dal Santo, Regional Superintendent • pdalsanto@kaneroe.org

## Legal Reference for Annual Report

This annual report is designed in part to meet the provisions of Chapter 105, Article 3, Sections 5/3-5, 5/3-6 and 5/3-15.8 of the School Code of Illinois. The report of schools visited and other official acts, meetings and activities of the office are provided to the Public Service Committee of the Kane County Board at regular monthly meetings.

## Legislative Development of the Office

- 1829 The sixth General Assembly mandated appointment of a Commissioner of School Lands.
- 1841 Title changed to County Commissioner and Ex-Officio County Superintendent of Schools.
- 1865 Legislature called for the election of the County Superintendent of Schools.
- 1973 Consolidation of smaller counties resulted in 78 regions.
- 1975 Title of Chief Administrative Officer of an education service region changed to Regional Superintendent of Schools.
- 1977 Further consolidation resulted in 57 regions in Illinois.
- 1993 Educational Service Region Office renamed Regional Office of Education.
- 1995 Further consolidation resulted in 45 regions, each with a population of at least 45,000 inhabitants.
- 2015 Further consolidation will result in 35 regions in Illinois each with a population of at least 61,000 inhabitants.

## Legal Reference for Annual Report

The Regional Board of School Trustees is an elected body with the sole responsibility of action on detachment/annexation petitions regarding boundary changes between school districts in the region. The board meets on the first Monday of January, April, July and October. Meetings may be canceled due to lack of agenda items. Patricia Dal Santo, Regional Superintendent, is the ex-officio Secretary for the Board of Trustees.

The members of the Regional Board of School Trustees are:

Chad Koppie, President	Rutland Township	Term Exp. 2019
Kyle Taylor, Vice President	St. Charles Township	Term Exp. 2019
Kevin Fitzpatrick	Sugar Grove Township	Term Exp. 2021
Paul Ross	Kaneville Township	Term Exp. 2021
Kevin Williams	Geneva Township	Term Exp. 2019
Richard Williams	Blackberry Township	Term Exp. 2023





# LEGISLATIVE

Patricia Dal Santo, Regional Superintendent • pdalsanto@kaneroe.org



## Superintendent of Educational Service Region

The act of Congress which admitted Illinois to the Union in 1818 set aside the sixteenth section of every township for the use of schools. In 1819, therefore, the General Assembly directed the county commissioners' court in each county to appoint three trustees from each township. These trustees, whose terms ran for four years, were charged with hiring a surveyor, laying out section 16 into lots, leasing those lots for no more than a ten year period, and appointing a clerk and treasurer to handle the leases. In 1827, this was modified to give the trustees responsibility for laying out school districts within the township. These districts were to contain no fewer than 18 scholars, and the trustees were to hire a teacher for the district.

The situation changed in 1829, when Congress agreed to permit the sale of section 16 lands. For the first time, the county commissioners' court could appoint a commissioner and agent for the county school lands. This position was the predecessor of the Regional Superintendent of Schools. The commissioner was required to prepare a record of the school lands in the county. When nine-tenths of the voters in any township decided to sell their school lands, they were required to petition the commissioner in writing. In turn, he arranged the sale, and loaned the money from the sale back to the township.

During the 1830s, minor changes were made in the school law. The percentage of voters required to sign a petition for sale of school lands was reduced and the county commissioners' court again appointed township school trustees. Most important, in 1837 the citizens of a township were given the choice of incorporating for the purpose of establishing and supporting common schools. The trustees were assigned the superintendence of the township schools, and they could appoint a clerk, who would also act as treasurer.

The school land commissioner was required to pay to this treasurer all of the money in his care which belonged to the township, and would deliver to him all bonds, notes, and mortgages. The township treasurer made an abstract, in return, which showed the name of each teacher, the number of scholars at each school, and the total number of days taught. The treasurer was to deliver this abstract to the school land commissioner and receive the interest due the township from the state's school, college, and seminary lands.

In 1841, the office of school commissioner became elective, for a term of two years. This same year, each school district was required to elect a board of three school directors, also for two-year terms. The school directors were empowered to select building sites, build schools, employ teachers, and visit the district schools. In townships which had not chosen to incorporate, the trustees of school lands could appoint school directors if none were elected.

The school law was under continual revision during the 1840's, and in 1845 the school commissioner was made ex officio county superintendent of the common schools. His duties included visiting the schools, examining teachers, and issuing certificates. By 1865, each county elected a superintendent of schools every four years. Township school trustees reported to this superintendent on the number of schools, the number of scholars, the number of male and female teachers, the compensation of teachers, the number of persons under age 21 in the township, the principal and interest of the township fund, the amount of the common school fund received by the treasurer, the amount raised by taxation, all other receipts and expenditures, and any other information required by the superintendent.



# LEGISLATIVE

Patricia Dal Santo, Regional Superintendent • pdalsanto@kaneroe.org

## Superintendent of Educational Service Region (CONT.)

Most of the original regulatory duties as mandated by Illinois School Law remain the responsibility of the Regional Superintendent of Schools like registering educators' certificates, approving and conducting teacher institutes, handling school lands, visiting schools, and examining the accounts of all school treasurers in the county. But over the last century many more mandated duties and responsibilities of the office have been added. For example in the area of certification, before a certificate can be re-registered, every individual professional development activity in the educator's required professional growth plan must be reviewed and approved as part of the rigorous re-certification process. Every new school employee is now fingerprinted and a criminal background check is conducted in partnership with the Illinois State Police and the FBI.

While the world has seen vast changes over the last century, the Regional Office of Education remains committed to providing quality service and performing its mandated functions. The Regional Office of Education remains dedicated to ensuring every child and citizen has the educational opportunity to achieve success.

## Regional Superintendents of Schools

R.B. "Bink" Makes	Prior to 1975
James L. Hanson	1975 – 1987
Dr. Douglas L. Hoeft	1987 – 1992
Dr. Clem Mejia	1993 – 2007
Douglas E. Johnson	2007 – 2012
Patricia Dal Santo	2012 - Present



# ALTERNATIVE PROGRAMS

Deanna Oliver, Assistant Superintendent • doliver@kaneroe.org



Our alternative programs assist with at-risk youth and their families facing atypical circumstances within the school system, whether it be homelessness, truancy, expulsion, or delinquency. As stated by the Illinois State Board of Education, regional offices of education are also responsible for investigating noncompliance within private and homeschool arrangements.

## Truancy Prevention/Intervention Program

In 2018-2019 the Regional Office of Education completed the 34th year of the Kane County Truancy Prevention Program. Youth Outreach Workers (truant officers) collaborate with schools to advocate for students and parents to ensure consistent school attendance. The services provided during the 2018-2019 year were the following:

Services	2018-2019
School Visits	1,659
Home Visits	561
Student Contacts	2,709
Community Agency Contacts	98
School Conferences	321
Regional Conferences	44
Juvenile Court Cases	13
Adult Court Cases	6

Source of Referrals by District	2018-2019
U-46 Elgin	586
101 Batavia	13
129 West Aurora	124
131 East Aurora	395
300 Dundee/Carpentersville	568
301 Central	12
302 Kaneland	10
303 St. Charles	29
304 Geneva	14
Total	1,751
<b>By Grade Level</b>	
Elementary K-5	573
Middle School	451
High School	727
Other	0
<b>By Gender</b>	
Males	951
Females	800





# ALTERNATIVE PROGRAMS

Deanna Oliver, Assistant Superintendent • doliver@kaneroe.org

## Regional Safe Schools Program (RSSP)

The Regional Safe Schools Program serves expulsion-eligible and/or multiply suspended students. The statewide program, authorized through the Regional Offices of Education, began serving students in 1996 as established by the Illinois School Code to provide a system of alternative education programs for disruptive students. The purpose of the RSSP is twofold: 1) to increase safety and promote the learning environment in schools and 2) to meet the particular educational needs of disruptive students more appropriately and individually in an alternative educational environment. This is a cooperative effort between the Regional Office of Education and the local school districts. The programs within school districts are designed to meet local needs. In 2018-2019, 292 students were served through this program. Without this program, those students would not have received an education and most likely would have become dropouts.

## General Education Development (GED) (105 ILCS 5/3-15.12)

The General Education Development (GED) Tests are completed at the ROE's Pearson VUE Testing Center. The test center offers computer-based tests to those who are 17 years of age or older in English or Spanish.

The GED test takes about 7.25 hours and contains four sections:

- Reasoning Through Language Arts (including a 10 minute break): 150 mins
- Mathematical Reasoning: 90 mins
- Science: 90 mins
- Social Studies: 90 mins

A passing score of 150 is required for each subject. A total score of 600 or higher is required to receive the GED certificate.

The cost of the GED is \$30 per subject, for a total of \$120.

The final component of the GED test is the passing of The Constitution test. This test is offered for free at the ROE and is completed on a computer.

In addition to the GED test, the ROE's Pearson VUE Test Center also provides GED transcripts and GED certificates upon written or faxed request. For more information, please visit the ROE's website here: <http://www.kaneroe.org/testing-services/ged/>



# ALTERNATIVE PROGRAMS

Deanna Oliver, Assistant Superintendent • doliver@kaneroe.org



## Juvenile Justice Center (105 ILCS 5/14-7.03)

The Regional Office of Education has an inter government agreement between School District #303, St. Charles, and the Chief Judge of the 16th Circuit Court to operate the educational program at the Juvenile Justice Center. The over-arching goal is to broaden the mindset of the students at the center. Students access online courses, GED preparation, dual credit courses, and explore college and careers.

## Home Schooling (105 ILCS 5/26-1)

Home schooling in Illinois is considered to be a form of private education. Parents who choose to educate their children at home are under a legal obligation to meet the minimum requirements stated in Illinois' Compulsory Attendance Law (Section 26-1 of the Illinois School Code). Parents who choose to educate their children at home are obligated to teach their children "...the branches of education taught to children of corresponding age and grade in the public schools" and they are further obligated to offer instruction in these core courses in the English language. The "branches of education" include language arts, mathematics, biological and physical sciences, social sciences, fine arts, and physical development and health.

The Regional Office of Education serves as a resource to those parents who are interested in home schooling their children. Information is shared with the parents to assist them. A request is made for parents to register with the Regional Office as a home schooling parent and assure that education is being provided to their children. There are no fees collected for resource information.

## Dropout Intervention Program

The Kane County Dropout Intervention Program completed its 31st year in the 2018-2019 school year. This program reaches out to those individuals who have dropped out of school for a variety of reasons. Information is provided to them regarding continuing their education in some manner through returning to school, obtaining a GED or vocational programming.

## Alternative Learning Opportunities Programs (ALOP) (105 ILCS 5/Art.13B)

The Alternative Learning Opportunities Program serves students that may need educational supports and other support services that are not currently provided by their regular school programs. In order to address these needs, Article 13B enables school districts to develop and implement Alternative Learning Opportunities Programs (ALOPs) that offer a broader range of academic, behavioral, and social/emotional interventions designed to increase the academic achievement levels of these students so that they are able meet the Illinois Learning Standards and complete their education in a safe learning environment. The Kane County Regional Office of Education partnered with 4 school districts and 1 special education cooperative to support students within an ALOP. 1,146 students in grades 4-12 received supports in an ALOP environment during the 2018-2019 school year.



## ALTERNATIVE PROGRAMS

Deanna Oliver, Assistant Superintendent • doliver@kaneroe.org

All children including homeless are entitled to a free public education. The goal of the Kane County Homeless Education Program is to assist the Kane County school districts to ensure equal educational access for all homeless children and youth, including preschoolers, so that each student will have the opportunity to succeed in school programs and meet the same challenging state standards to which all students are held.

**Kane County ROE Equal Chance Program** (Federal, Subtitle B of Title VII, McKinney-Vento Homeless Assistance Act 42 U.S.C. 11431 et seq)

The Kane County ROE Equal Chance Program McKinney/Vento Program assists our School Districts by;

- Provide McKinney/Vento training to administrators, school staff, social service agencies and community agency staff
- Providing outreach and materials to all public schools and agencies in Kane County
- Facilitating weekly parent meetings at shelters
- Collaborating with ROE Youth Outreach Workers and Safe Schools Facilitators
- Providing direct and supportive assistance to families/youth in need
- Assist High School Juniors and Seniors with college planning, applications, scholarships, FAFSA

For the 2018-2019 school year the ROE Equal Chance Program provided:

- Technical assistance to all 10 Kane County School District Liaisons
- Training with required evaluations-260 individuals
- 6 Administrators' Academies
- Created and held Unaccompanied Youth Conference for Kane County Institute Day
- Facilitated 35 parent meetings
- Met with 70 students several times throughout the year to offer supportive services
- Assisted 6 students to complete FAFSA and enroll in college
- Weekly meetings/workshops with Community Crisis Center Clients
- Collaborated with ECC, U-46, D300, KCCU, Community Crisis Center for the 10th Annual Project Backpack Back To School Fair in distributing 1,879 backpacks filled with school supplies
- Distributed Christmas Gifts donate by churches, Renaissance Foundation and Kane ROE to 270 children
- Distributed 28 Thanksgiving and Easter food baskets to Kane County families
- Partnered with U-46, D300, and Elgin YWCA for 7th annual Cinderella's Closet to provide prom dresses for Kane County students in need

Affiliations 2018-2019 School Year:

- Area Planning Meeting Committee member
- Participating in U-46 alignment process for Trauma Informed care
- Belong to the EPEL group and on the communications taskforce
- Collaborate and participate in planning for on the Aurora SPARK

This program is administered by the Area One Lead Program and funded by a sub grant from the Illinois State Board of Education through the McKinney –Vento Homeless Assistance Act of 2001.

For the 2018-2019 school year, school districts in Kane County identified, served and reported 2,055 homeless students.





# BUSINESS OFFICE

Meg Fetzer, Director of Finance • mfetzer@kaneroe.org



A portion of the funds for the operating budget of the Kane County Regional Office of Education is provided by the Kane County Government. The salaries for the Regional Superintendent and the Associate Regional Superintendent are paid by the State of Illinois. The majority of funding for the operating budget for the office comes from competitive private, state, and federal grants.

The following budget figures are based on the County’s fiscal year, which runs from December 1st through November 30th.

Line Item	Budgeted Amount FY18	Budgeted Amount FY19	Percent of Change
<b>Personnel Services</b>			
Full Time Salaries	\$258,176.00	\$256,680.00	-0.58%
Benefits	\$35,099.00	\$40,517.00	15.44%
<b>Contractual Services</b>			
<b>Public Official Bonding</b>			
<b>Trials &amp; Cost of Hearings</b>			
<b>Printing - Legal</b>			
<b>Printing - General</b>			
<b>Consulting</b>	\$4,575.00	\$4,575.00	0.00%
<b>Totals</b>	<b>\$297,850.00</b>	<b>\$301,772.00</b>	<b>0.00%</b>



# BUSINESS OFFICE

Meg Fetzer, Director of Finance • mfetzer@kaneroe.org

## Institute Fund Financial Report

All certificate registration fees and a portion of renewal and duplicate fees are to be kept by the Regional Superintendent and deposited into the institute fund. The expenditure of these funds is very restricted and is used to defray expenses incidental to teachers' institutes, workshops, or meetings of a professional nature that are designed to promote the professional growth of teachers, or of any general or special meeting of teachers or school personnel of the region, which has been approved by the Regional Superintendent.

## Institute Fund Financial Report July 1, 2018 - June 30, 2019

Unaudited

<b>Beginning Fund Balance, July 1, 2017</b>		<b>\$1,386,090</b>
<b>Receipts</b>		
Certificate Registration	152,851	
Interest	28,299	
Educator of the Year	18,739	
Transfers In	-	
<b>Total Receipts</b>	<b>199,889</b>	
<b>Disbursements</b>		
Other Purchased Services	84,130	
Operating Expense	10,544	
Professional & Technical Services	377	
<b>Total Disbursements</b>	<b>95,052</b>	<b>104,837</b>
<b>Ending Fund Balance, June 30, 2018</b>		<b>\$1,490,928</b>



# NETWORKS

The ROE has established multiple networks with the nine K-12 school districts in its jurisdiction.

Networks provide mutual assistance and support that facilitates sharing of information and services among individuals and groups. Constant feedback and strong participation indicate that networks are serving the nine Kane County school districts and their staffs well through sharing of best practices, working together to solve common problems, and providing savings through collaborative program development. Collaborative professional development opportunities are regularly developed, like the annual countywide institute day, resulting in saving precious budget dollars.

The networks are prominently mentioned as a benefit for new members as they gain expertise from experienced colleagues throughout the region. Regional Office of Education leadership also participates in area and statewide networks like regional superintendents, administrators' academy coordinators, professional development directors, safe school directors and technology directors.

The ROE has established the following networks with the nine K-12 school districts in its jurisdiction:

- Chief School Business Officials
- Facilities Managers
- High School Principals
- Kane County Human Resources Consortium (human resources directors)
- Kane County Instructional Technologists
- Kane County Learning Leaders (directors of curriculum and instruction)
- Kane County Literacy Leaders
- Northern Illinois Association w/ Special Education Directors
- School District Superintendents
- School Safety/Security Team
- School Health/Wellness Team
- Special Education Directors
- Chief Technology Officers and System Administrators
- Transportation Directors
- Transportation Routers



Adaptive School Seminar hosted at the Kane County Cougars field.



Transportation Directors meeting at the Kane County ROE office.





# PARTNERSHIPS

We connect with local & national non-profits and associations that support education.

## Kane County Human Resource Consortium (KCHRC)

The Kane County Human Resource Consortium (KCHRC), formed in 2002, is a cooperative effort among the nine public K-12 school districts and the Regional Office of Education in Kane County, Illinois. The KCHRC is dedicated to the recruitment, selection, and professional growth of quality educators. The consortium has created a single online application process allowing applicants to submit a teaching application to all nine districts simultaneously. Kane County school administrators are trained to utilize the system in the hiring of all certified teachers. District human resources directors meet twice a month with the ROE for planning and professional development. More information can be found at [www.teachinkane.org](http://www.teachinkane.org)

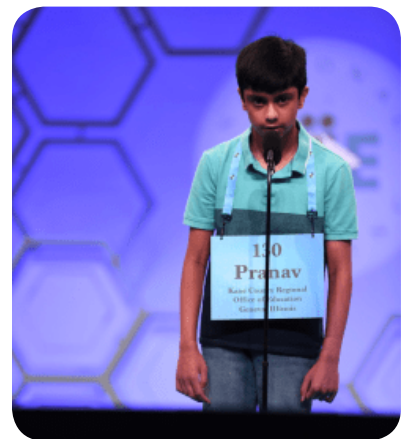
## Operation Snowball

Greater Fox River Valley Operation Snowball (GFRVOS) is a community-based alcohol, tobacco, and drug use prevention program focusing on leadership development to empower youth to lead drug-free lives. The name originates from the idea that “If I can have a positive impact on you, you can have a positive impact on someone else and the effect snowballs.” Out of this concept emerges “A Community of Caring” - the success of Operation Snowball.

Operation Snowball seeks to bring together high school youth and caring adults to develop trusting relationships. It is founded on the belief that youth and adults can make responsible decisions when provided with factual information and an opportunity to develop an understanding of one’s self and others. Currently there are 12 participating high schools within Kane County. The group meets at the ROE weekly during the evening. Twice during the year, they hold a weekend event which draws approximately 150 student attendees.

## Spelling Bee

In cooperation with the Scripps National Spelling Bee, the Kane County ROE hosts two area semi-final spelling bees, and a Regional Spelling Bee Final. The ROE is proud to coordinate the spelling bee for our Kane County public and non-public schools. At the beginning of each school year, all schools that register with Scripps to participate have individual school spelling bees. The winners’ names are reported to the Kane County Regional Office of Education. The regional Spelling Bee semi-finals are scheduled to take place in February. The top four winners from the semi-final bees participate in the final competition in March before one winner from Kane County proceeds to the Scripps National Spelling Bee in Washington D.C. in May. The local and regional spelling bees are coordinated and funded by the Regional Office of Education.



Pranav Kollu from Cambridge Lakes Charter School at the National Spelling Bee in Washington, D.C.



# PROFESSIONAL DEVELOPMENT

Katie Algrim, Director of Innovative Professional Learning • [kalgrim@kaneroe.org](mailto:kalgrim@kaneroe.org)



The Regional Office of Education facilitates and works collaboratively with teachers and leaders to guide their continuous instructional improvements through professional development opportunities. Our office establishes educational partnerships that offer best practices for enhancing student achievement.

The Regional Office of Education supports a wide variety of activities including institutes, workshops, conferences, networking, technical assistance, information dissemination, online courses, and consulting to meet the needs of our schools. These activities are designed to complement district professional development programs. Our office collaborates with local, regional, and state educational partners representing both the public and private sector to create learning opportunities for the entire Kane County learning community.

The Regional Office of Education & ISC's are approved Learning Partners through the Illinois State Board of Education IL-Empower Framework. As a learning partner the Kane County Regional Office of Education provided high quality professional development to schools that received an ESSA (Every Student Succeed Act) designation of Tier 3 or Tier 4 within Kane County under all three priority areas: Climate & Culture, Curriculum & Instruction, and Governance & Management.

## Illinois Online Academy

The Kane County Regional Office of Education provides online professional development courses for educators. These courses and book studies are intentionally structured so the skills and knowledge the educators learn can immediately be applied to the classroom. Online classes are offered for graduate credits or professional development clock hours. The courses through Illinois Online Academy can be accessed anywhere, anytime maximizing the flexibility technology provides to meet teachers need for professional learning at their convenience



## Principal Mentoring

Leadership matters. Research suggests that the second most important school-related factor impacting what students learn in school, right behind an effective teacher, is an effective principal.

The Kane County Regional Office of Education offers a mentoring/coaching program for principals and assistant principals who are in their first or second year of service. The program's goal is to help administrators achieve success in alignment with their school district's vision and the unique needs of their school building.

The program is broken into two components: coaching services and networking opportunities. School districts can choose to enroll principals and assistant principals in their first or second year of service in one or both components of the program.



# PROFESSIONAL DEVELOPMENT

Katie Algrim, Director of Innovative Professional Learning • [kalgrim@kaneroe.org](mailto:kalgrim@kaneroe.org)

## Illinois Administrators' Academy (105 ILCS 5/2-3.53)

The purpose of the academy is to maintain a statewide, regionally-based network that provides opportunities for mandated professional development for school administrators. The academy provides high-quality training on the evaluation of certified personnel, school improvement, school accountability, public relations, communications, and pertinent leadership education relating to student growth, student achievement and school operations. By statute, every administrator must complete a minimum of one approved academy annually and a minimum of five in each administrator certificate renewal period.

Section 24A-3 of the School Code requires that an individual who conducts evaluations of teachers, principals, or assistant principals after September 1, 2012, must be prequalified before undertaking any evaluations and must participate in a regularly scheduled retraining program, either of which must be developed or approved by the State Board of Education. The Kane County Regional Office of Education offers the "Recalibration Academies" and initial principal & teacher evaluation trainings annually to meet legislative requirements.

## Institute Day (105 ILCS 5/3-11)

The Kane County Regional Office of Education coordinates and sponsors a countywide institute day of learning for all educators throughout the county on the first Friday in March. This conference style professional learning experience allows The Kane County Regional Office of Education to provide over 250 different breakout sessions to over 2,500 teachers, paraprofessionals, health professionals and other support staff who are able to select workshops of interest to attend. Participants have access to the latest research-based practices and acquire new ideas and knowledge to help facilitate their work in teaching and learning. Breakout session topics include but are not limited to:

- Assessment
- English Language Learner
- Engagement
- Language Arts
- Foreign Languages
- Math
- Next Generation Science Standards
- Professional Learning Communities
- Social Emotional Learning
- Special Education
- Technology
- ACES
- Early Childhood
- Personalized Learning
- Social Studies
- STEM
- Career and Technical Education
- Fine Arts
- Diversity
- Poverty
- Music
- Physical Science



Institute Day 2019





# EDUCATOR OF THE YEAR

Patricia Dal Santo, Regional Superintendent • pdalsanto@kaneroe.org



The 44th Annual Educator of the Year Awards Banquet was held at the Q Center in St. Charles on May 3, 2019. This awards banquet provides an opportunity to honor outstanding members of the education profession in Kane County and promote awareness of the quality education being provided in our schools. Special recognition is also given to those retiring from education.

Local nominating committees consisting of teachers and administrators nominate educators throughout the county. Those nominated are seen as having the respect and admiration of students, parents, and co-workers. They play active and useful roles in their communities and schools, often distinguishing themselves as leaders.

Those honored represent the dedicated service found in all of the staff throughout Kane County. This program has received enthusiastic support from regional educators, and several Kane County award recipients have been selected by the Illinois State Board of Education as outstanding teachers in Illinois.

The dinner honored 36 distinguished educators with plaques of recognition. Those who received awards of distinction were:

<b><u>Award</u></b>	<b><u>Name</u></b>	<b><u>District</u></b>
Educator of the Year	Tina M. Scruggs	District 301
Elementary Educator of the Year	Christine A. Purnell	District 302
Middle School Educator of the Year	Katherine White-Seydel	District 300
High School Educator of the Year	Derek Douglas Sutor	District 304
Regional Superintendent Award	Rachel Rodriguez	District 301
Administrator of the Year	Stephen C. Morrill	District 303
Early Career Educator Award	Kevin Ryan Ongtengco	District 129
Pre-School Teacher of the Year	E. Denise Halleran	District 131
Student Support Personnel Award	Karen Osborne	District U-46
Educational Service Personnel Award	Susan Sensor	District 302
Private/Parochial Teacher Award	James Stewart Kidston	Elgin Academy



Tina M. Scruggs, winner of Educator of the Year, giving her acceptance speech



Patricia Dal Santo (left) presenting Lindsey Reynolds (right) with plaque.



Christine A. Purnell celebrating winning Elementary Educator of the Year



## LICENSURE

Deanna Oliver, Assistant Superintendent • [doliver@kaneroe.org](mailto:doliver@kaneroe.org)

The Kane County Regional Office of Education Licensure Department serves teachers and administrators with all aspects of their credential needs. The office provides instructions on how to access the Educators Licensure Information System (ELIS). The office gives information on how to apply for licenses, endorsements, approvals; how to register and renew licenses; and how to enter professional development credit hours using ELIS. The Licensure Department also answers many questions via email and phone.

The Kane County ROE tested 183 Paraprofessionals so they can obtain their NCLB Paraprofessional Approval.

The Kane County ROE hosts and maintains the Kane County Human Resource Consortium online teacher application and vacancy system for all Kane County public school districts. There were more than 9,000 active applications in the KCHRC system in 2018-2019.



## TRANSPORTATION

Deanna Oliver, Assistant Superintendent • [doliver@kaneroe.org](mailto:doliver@kaneroe.org)

### **School Bus Driver Trainings (105 ILCS 5/3-14.23)**

The Regional Office of Education is responsible for conducting the initial training that is required for all new school bus drivers prior to getting a bus permit, and the annual refresher workshop that is required in the 12-month period prior to renewing a school bus permit. Experienced drivers must take a two-hour refresher course annually, and all new drivers must take an eight-hour course in school bus driver safety and first aid, as prescribed by the Illinois State Board of Education and administered by the Kane County ROE.

The Kane County ROE provided 16 Initial Bus Driver Training courses and 40 Refresher Trainings for 1,825 participants.



# OPERATIONS AND TECHNOLOGY SERVICES

Phil Morris, Director of Operations & Technology • pmorris@kaneroe.org



## Facility Managers Network

The State of Illinois has designated the Regional Office of Education as the Authority Having Jurisdiction (AHJ) over public schools in regard to Health/Life Safety. Regional Offices of Education have the authority and responsibility to inspect school construction and building/facility maintenance to assure that those facilities are safe and secure for school children and staff.

The Kane County Facility Managers Network was created in September 2008 to foster communication, cooperation and collaboration among the nine school districts and the Regional Office of Education. Attendees include school district facility managers, school district construction projects managers, architects, consultants and ROE staff. Meetings assist participants to be prepared to assure that construction projects meet all relevant codes prior to application for occupancy. The ROE conducts annual HLS inspections with facility managers and principals to assure that the maintenance of all school buildings and facilities meets code and provides a safe and secure surrounding for children and staff. All have an opportunity to learn what others are doing and participants may share procedures, resources, and successes in their districts.

## Fingerprinting (105 ILCS 5/10-21.9)

The Regional Office of Education provides fingerprinting services for all our public school districts. The Illinois School Code requires all new employees to have both a State and FBI criminal background check. Last year, approximately 3,894 people were fingerprinted. The electronic submission of fingerprints allows the ROE to typically receive results within 24 hours, so a school district can begin employment immediately.

The ROE also partners with Kane County government to fingerprint their new employees throughout the year.

## Geographic Information System (GIS) (105 ILCS 5/7-6)

The Kane County Regional Office of Education offers school districts the opportunity to request the assistance of its geographic information system (GIS). The GIS allows for the creation of custom maps and geographic analyses for school districts. GIS has proven to be a useful tool for Kane County school districts in the matter of attendance boundaries.

The software allows a school district to calculate student populations in a geographic area. Attendance areas can be broken down, allowing for smaller geographic units of measurement and the presentation of a variety of school boundary scenarios. GIS allows school districts to create and take advantage of updatable maps to address geographic concerns. Some transportation concerns such as bus routes, bus stops, and hazardous roads can be represented in the GIS.



# OPERATIONS AND TECHNOLOGY SERVICES

Phil Morris, Director of Operations & Technology • pmorris@kaneroe.org

## **Learning Technology Services (105 ILCS 5/2-3.118)**

A needs assessment is given during the year at monthly technology coordinator meetings. Monthly technology coordinator meetings are used to communicate information from the Illinois State Board of Education, and also allow dialogue between districts.

Learning Technology Services also provides technical support within the Regional Office of Education to maintain connectivity to the Illinois State Board of Education electronic systems including Teacher Certification, Administrators' Academy, and GED. Learning Technology Services supports the technology implementation at the Kane County Juvenile Justice Center (JJC).

During this past year the following services have been provided:

- Online registration for workshops with digital encryption
- Consultation for KCHRC On-Line Application
- Maintenance of LiveScan fingerprint equipment for fingerprinting of new teachers and bus drivers in Kane County
- Hosting specialized training for school districts
- Continuing support for Follett Destiny
- Maintaining the Kane County ROE website, Facebook fan page, and Twitter pages.
- Support HLS system for school inspections as well as further statewide development
- Provide support for IARSS (Website, Listservs, technical questions)
- Supported online compliance system for all ROE's to use
- Facilitate meetings of Technology Directors, Instructional Technology, and System Administrators
- Updated HLS iPad system and Compliance system used by all ROE's in Illinois
- Provided training on Coding for teachers
- Provided training on Follett Destiny Library for consortium members
- Facilitated training for Online Application System for partner school districts
- Phil Morris is Past President of the Illinois Educational Technology Leaders.





# OPERATIONS AND TECHNOLOGY SERVICES

Phil Morris, Director of Operations & Technology • pmorris@kaneroe.org



## Health and Life Safety

All public school buildings and school-related buildings, including temporary/mobile classrooms, in the Kane County Regional Office of Education jurisdiction are inspected annually to assure compliance with the standards necessary to ensure the health and safety of public school students in Illinois, according to “Building Specifications for Health and Safety in Public Schools.” Annual inspection results from each building are available at the ROE. As required by law, a record of the annual inspection is sent to the president of the school board and a summary is filed annually with the State Board of Education. In addition, results from required State Fire Marshall inspections are reported through the ROE to the school districts and the state.

Every 10 years, each public building must be resurveyed for continued compliance by an architect or engineer licensed in the State of Illinois. The “Safety Survey Report” lists any items necessary to bring the building into full and continual compliance. Upon completion of outlined work, compliance is verified by the district and a licensed architect or engineer in a report filed with the ROE, and the building is awarded a certificate of compliance.

The ROE is also responsible, through the Regional Superintendent of Schools, for statutory compliance with established standards in the construction, remodeling and demolition of public school buildings. The Regional Superintendent assures school board approval of construction plans, review of construction plans for code compliance, issuance of the building permit, and upon review, issuance of school occupancy permits. Furthermore, the Regional Superintendent assures code compliance for temporary/mobile classroom units throughout the region in cooperation with licensed architects or engineers retained by local school districts. Records of all amendments and construction information are kept on file at the ROE.



Phil Morris speaking at Tech Bash 2019.



Google breakout session at Tech Bash 2019



# OPERATIONS AND TECHNOLOGY SERVICES

Phil Morris, Director of Operations & Technology • pmorris@kaneroe.org

## School Health/Wellness Team

Since early 2009, the school health/wellness team network, with representation from the nine public school districts, the ROE and guests from the Kane County Health Department has met monthly during the school year to review health and wellness issues. Representatives share problems, possible solutions and resources, as well as successes. Initially the network focused on identifying and listing the many different programs in the districts that impact the health and wellness of students and staff. The existence of the health/wellness team network was very helpful when concern about the H1N1 Virus, commonly known as the “Swine Flu” emerged. The network also spent time discussing and brainstorming about involvement in the Kane County “Fit Kids 2020” program.

## School Safety & Security Team

Beginning in September 2007, the school safety/security team network, with representation from the nine public school districts and the ROE have met monthly during the school year to review school safety - security issues, plans, procedures and practices. Representatives share successes, problems, possible solutions and resources. Outside resources, including IMSA, County Emergency & Management Association County Sherriff’s Department, local police, local fire, the FBI, and security consulting firms have been utilized to foster knowledge and understanding of safety issues. The network focuses on making sure all students and staff members are prepared for emergency situations. The safety/security network stresses that law enforcement first responders and the administration of all schools must collaborate to prepare and practice for emergency situations. Training has been provided to address awareness and prevention practices of school safety issues.



# FINANCE REPORTS

Meg Fetzer, Director of Finance • mfetzer@kaneroe.org



## Certified Personnel

DISTRICT	TOTAL CERTIFIED (INCLUDE PART TIME)	DOCTORS & ED SPEC/ CAS DEGREE	MASTERS DEGREE	BACHELORS DEGREE	TEACHERS (INCLUDE PART TIME)	AVG. SAL FULL-TIME CERTIFIED TEACHERS	AVG. SAL FULL-TIME CERTIFIED ADMIN
U -46 ELGIN	2,755	32	2,088	635	688	\$70,264	\$103,125
101 BATAVIA	453	14	365	74	95	\$71,128	\$108,580
129 AURORA WEST	1,016	29	773	214	240	\$71,603	\$100,986
131 AURORA EAST	1,060	116	609	335	203	\$59,812	\$94,442
300 DUNDEE	1,698	64	1,149	485	389	\$60,800	\$106,603
301 CENTRAL	324	16	179	129	46	\$58,358	\$105,270
302 KANELAND	378	9	273	96	66	\$67,862	\$96,580
303 ST CHARLES	1,069	33	852	184	187	\$66,550	\$111,628
304 GENEVA	499	12	376	111	147	\$72,721	\$112,522
<b>TOTAL FY2018</b>	<b>9,252</b>	<b>325</b>	<b>6,664</b>	<b>2,263</b>	<b>2,061</b>	<b>\$66,566</b>	<b>\$104,415</b>
		<b>3.51%</b>	<b>72.03%</b>	<b>24.46%</b>	<b>22.28%</b>		
<b>TOTAL FY2018</b>	<b>9,811</b>	<b>208</b>	<b>6,510</b>	<b>3,093</b>	<b>1,995</b>	<b>\$66,935</b>	<b>\$104,336</b>
		<b>2.12%</b>	<b>66.35%</b>	<b>31.53%</b>	<b>20.33%</b>		

Source: Kane County School Districts, Compiled by Meg Fetzer, CPA, mfetzer@kaneroe.org



# FINANCE REPORTS

Meg Fetzer, Director of Finance • mfetzer@kaneroe.org

## Certified Personnel (Cont.)

DISTRICT	AVG. YRS. EXPERIENCE TEACHING IN ILLINOIS	ENROLLMENT PER CERTIFIED STAFF MEMBER FY2019	ENROLLMENT PER CERTIFIED STAFF MEMBER FY2018	TEACHER TO ADMIN STAFF RATIO	SUPPORT STAFF	ENROLLMENT TO SUPPORT STAFF RATIO	ENROLLMENT PER FALL HOUSING RPT 2018-2019
U-46 ELGIN	10.83	13.8	15.2	17.2	2,166	17.5	37,964
101 BATAVIA	12.0	12.4	13.0	12.9	140	40.1	5,611
129 AURORA WEST	11.0	11.8	12.6	10.8	412	29.2	12,027
131 AURORA EAST	9.0	13.0	13.4	7.3	342	40.3	13,799
300 DUNDEE	11.0	12.3	12.7	14.8	475	43.9	20,871
301 CENTRAL	10.1	13.3	12.5	20.3	246	17.5	4,305
302 KANELAND	11.0	11.3	12.2	16.4	209	20.5	4,279
303 ST CHARLES	14.5	11.4	6.4	8.8	357	34.2	12,194
304 GENEVA	10.8	11.3	12.1	17.8	255	22.1	5,642
AVERAGE	11.1	12.3	12.2	14.0	4,602	25.4	116,692
PRIOR YEAR	10.5	13.0	13.0	13.5	4,168	28.7	119,431

Source: Kane County School Districts, Compiled by Meg Fetzer, CPA, mfetzer@kaneroe.org





# FINANCE REPORTS

Meg Fetzer, Director of Finance • mfetzer@kaneroe.org



## Classroom Buildings in Use | July 1, 2018 - June 30, 2019

DISTRICT	ELEMENTARY SCHOOL		MIDDLE OR JR HIGH SCHOOL		SENIOR HIGH SCHOOL		MOBILE CLASSROOMS		OTHER SPECIAL ED, VOC. ED ETC.	
	FY 19	FY 18	FY 19	FY 18	FY 19	FY 18	FY 19	FY 18	FY 19	FY 18
<b>U-46 ELGIN</b>	40	40	8	8	5	5	13	19	4	5
<b>101 BATAVIA</b>	6	6	1	1	1	1	0	0	0	0
<b>129 AURORA WEST</b>	10	10	4	4	1	1	0	0	3	3
<b>131 AURORA EAST</b>	14	13	3	4	2	1	0	0	2	2
<b>300 DUNDEE</b>	16	16	4	4	3	3	0	0	2	4
<b>301 CENTRAL</b>	4	4	2	2	1	1	0	0	0	0
<b>302 KANELAND</b>	4	4	1	1	1	1	0	0	1	1
<b>303 ST CHARLES</b>	11	12	3	3	2	2	6	6	1	0
<b>304 GENEVA</b>	6	6	2	2	1	1	1	1	0	0
<b>TOTAL</b>	111	111	28	29	17	16	20	26	13	15

Source: Kane County School Districts, Compiled by Meg Fetzer, CPA, mfetzer@kaneroe.org



# FINANCE REPORTS

Meg Fetzer, Director of Finance • mfetzer@kaneroe.org

## Public School Enrollment - September 2018

School	FY16	FY17	Pre-K	K-5	6-8	9-12
U46 Elgin	38,934	37,934	1,277	16,112	8,802	11,773
101 Batavia	5,819	5,611	155	2,207	1,307	1,942
129 West Aurora	12,315	12,027	558	4,880	2,845	3,744
131 East Aurora	14,061	13,799	666	5,967	3,194	3,972
300 Dundee	20,973	20,871	717	8,978	4,761	6,415
301 Central	4,168	4,305	97	2,044	986	1,178
302 Kaneland	4,406	4,279	85	1,806	1,100	1,288
303 St. Charles	12,436	12,194	290	4,613	2,839	4,452
304 Geneva	5,801	5,642	78	2,369	1,306	1,889
<b>TOTAL FY18</b>		<b>116,692</b>	<b>3,923</b>	<b>48,976</b>	<b>27,140</b>	<b>36,653</b>
<b>TOTAL FY17</b>		<b>118,913</b>	<b>3,816</b>	<b>50,473</b>	<b>27,704</b>	<b>36,920</b>

Source: Kane County School Districts, Compiled by Meg Fetzer, CPA, mfetzer@kaneroe.org



# FINANCE REPORTS

Meg Fetzer, Director of Finance • mfetzer@kaneroe.org

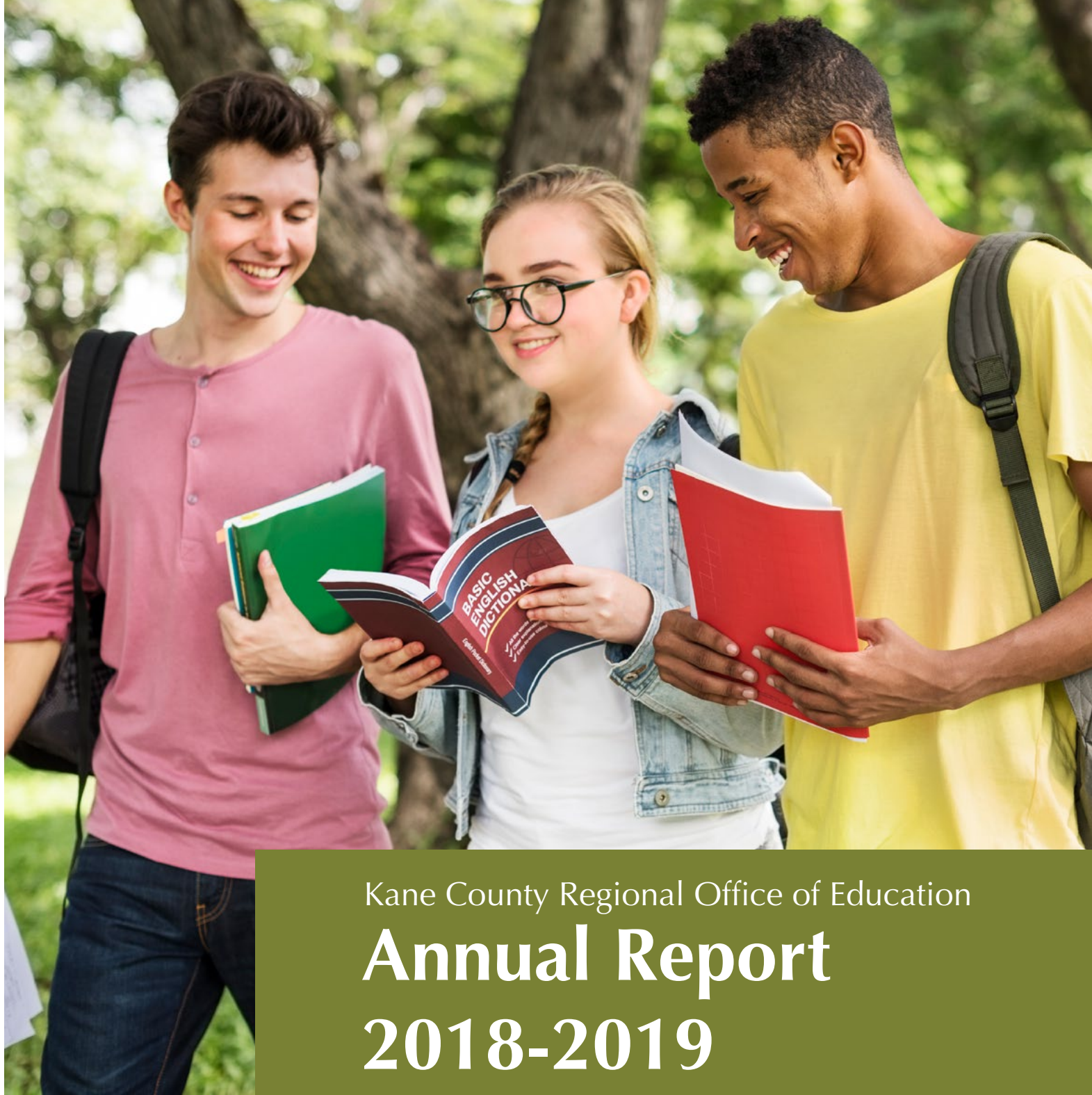


## ISBE Federal & State Revenue - Fiscal Year Ending June 30, 2019

	\$ STATE AID *	\$ STATE - OTHER	\$ FEDERAL	\$ TOTAL	\$ PER ADA	\$ ADA
U-46 ELGIN	177,917,027	31,302,931	31,981,246	241,201,204	6,899	34,963
101 BATAVIA	5,080,005	3,038,187	1,414,813	9,533,005	1,733	5,501
129 AURORA WEST	55,538,483	8,483,912	13,153,745	77,176,140	7,064	10,925
131 AURORA EAST	128,133,647	13,005,885	19,736,289	160,875,821	13,067	12,312
300 DUNDEE	54,251,683	12,287,980	13,149,823	79,689,487	4,094	19,463
301 CENTRAL	7,051,419	2,357,090	565,018	9,973,528	2,527	3,947
302 KANELAND	6,945,317	4,253,343	376,927	11,575,586	2,825	4,098
303 ST CHARLES	9,616,985	5,615,068	1,573,290	16,805,342	1,527	11,007
304 GENEVA	4,263,220	2,826,271	580,224	7,669,715	1,399	5,481
						107,697
<b>TOTAL FY2019</b>	<b>448,797,787</b>	<b>83,170,667</b>	<b>82,531,375</b>	<b>614,499,829</b>	<b>5,706</b>	
<b>TOTAL FY2018</b>	<b>410,219,111</b>	<b>80,258,582</b>	<b>82,463,707</b>	<b>572,941,400</b>	<b>5,265</b>	
<b>CHANGE</b>	<b>8.60%</b>	<b>3.50%</b>	<b>0.08%</b>	<b>6.76%</b>	<b>7.72%</b>	

Source: FRIS Report

Additional Financial and District information may be obtained at [www.isbe.net](http://www.isbe.net)



Kane County Regional Office of Education  
**Annual Report**  
**2018-2019**



REGIONAL OFFICE OF EDUCATION  
KANE COUNTY



[facebook.com/KaneCountyROE/](https://facebook.com/KaneCountyROE/)



[@KaneCountyROE](https://twitter.com/KaneCountyROE)



[linkedin.com/company/kane-county-roe-il](https://linkedin.com/company/kane-county-roe-il)