

REGIONAL OFFICE OF EDUCATION
KANE COUNTY



REGIONAL SUPERINTENDENT
PATRICIA DAL SANTO

ANNUAL REPORT

2015-2016



REGIONAL OFFICE OF EDUCATION
KANE COUNTY

CONTENTS

Intro from Superintendent.....	Pg. 3
Our Districts.....	Pg. 4
School District Boundary Map.....	Pg. 5
Organizational Chart.....	Pg. 6
Alternative Programs.....	Pg. 7-8
Homeless Education.....	Pg. 9
Business Office.....	Pg. 10-11
Partnerships.....	Pg. 12-13
Professional Development.....	Pg. 14-15
Educator of the Year.....	Pg. 16
Licensure.....	Pg. 17
Transportation.....	Pg. 18
School Safety & Security.....	Pg. 19
Technology.....	Pg. 20-21
Finance Reports.....	Pg. 22-26



KANE COUNTY REGIONAL OFFICE OF EDUCATION FISCAL YEAR 2016 ANNUAL REPORT

As superintendent of the Kane County Regional Office of Education in Kane County, Illinois, I hereby submit the annual report of the activities of this office from July 1, 2015 through June 30, 2016.

This report is an overview and is not inclusive of all the services and collaborative partnerships that the Regional Office of Education provides.

This report uses information from our programs, services, and end-of-year school reports from the Illinois State Board of Education. We hope it will help you better understand the work of our office and the educators of Kane County.

As a community, our duty is to ensure our school buildings are safe, nurturing places of learning where all people, young and old, are valued and respected.

Sincerely,

Patricia Dal Santo
Regional Superintendent of Schools
Kane County Regional Office of Education



OUR KANE COUNTY SCHOOL DISTRICTS



School District U-46
Dr. Kenneth Arndt, Interim Supt.
Mr. Tony Sanders, CEO
355 E. Chicago Street,
Elgin, IL 60120
Phone: 847-888-5000
www.u-46.org



School District 101
Dr. Lisa Hichens, Superintendent
335 W. Wilson Street
Batavia, IL 60510
Phone: 630-937-8800
www.bps101.net



West Aurora

School District 129
Dr. Jeff Craig, Superintendent
Box 4430
80 S. River Street
Aurora, IL 60506
Phone: 630-301-5000
www.sd129.org



School District 131
Dr. Michael Popp, Superintendent
417 Fifth Street
Aurora, IL 60505
Phone: 630-301-5000
www.d131.org



School District 300
Mr. Fred Heid, Superintendent
2550 Harnish Drive
Algonquin IL 60102
Phone: 847-551-8300
www.d300.org



School District 301
Dr. Todd Stirn, Superintendent
275 South Street, Box 396
Burlington, IL 60109
Phone: 847-464-6005
www.burlington.k12.il.us



School District 302
Dr. Todd Leden, Superintendent
47W326 Keslinger Road
Maple Park, IL 60151
Phone: 630-365-5111
www.kaneland.org



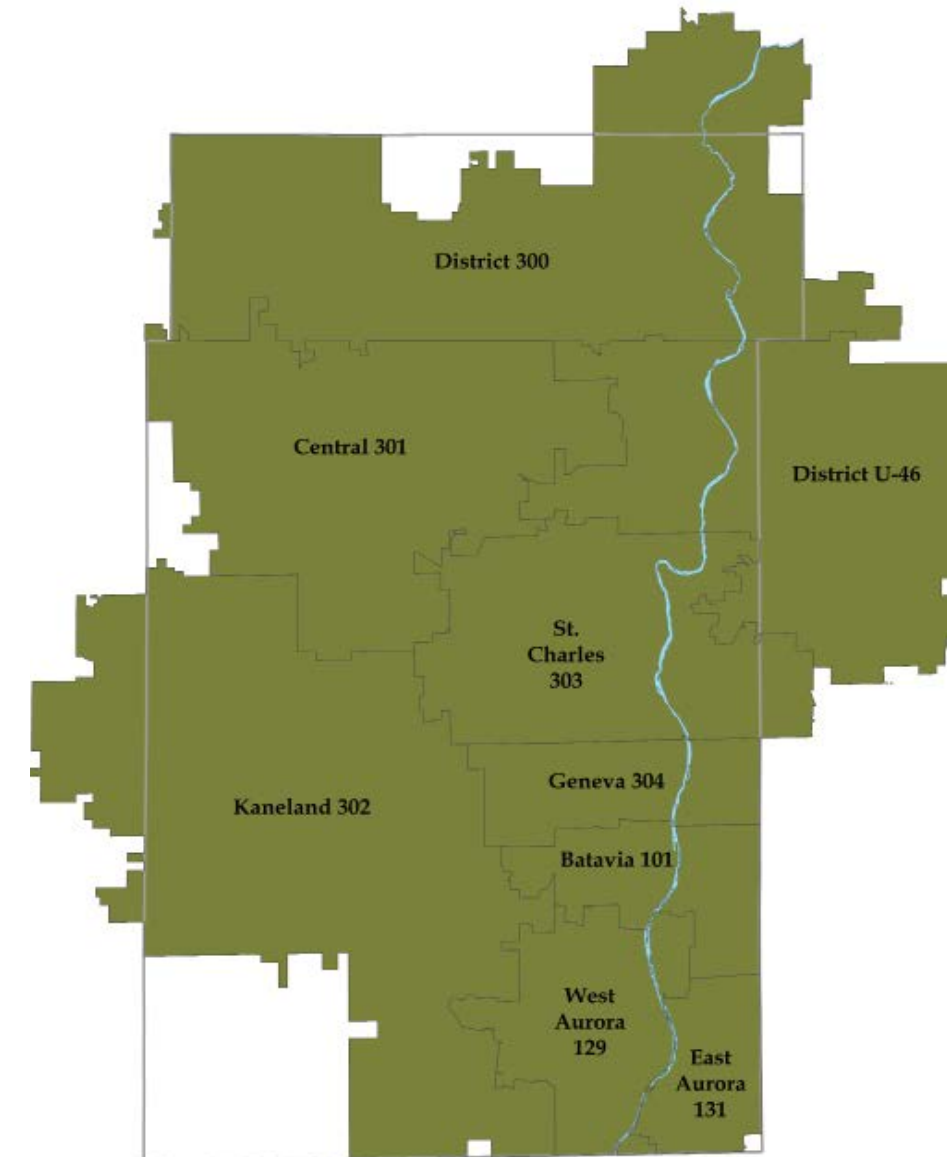
School District 303
Dr. Don Schlomann, Superintendent
201 S. 7th Street
St. Charles, IL 60174
Phone: 331-228-2000
www.d303.org



School District 304
Dr. Kent Mutchler, Superintendent
227 North Fourth Street
Geneva, IL 60134
Phone: 630-463-3000
www.geneva304.org

**Access the public school
directory on the ROE
website here:**
<http://goo.gl/ahciXL>

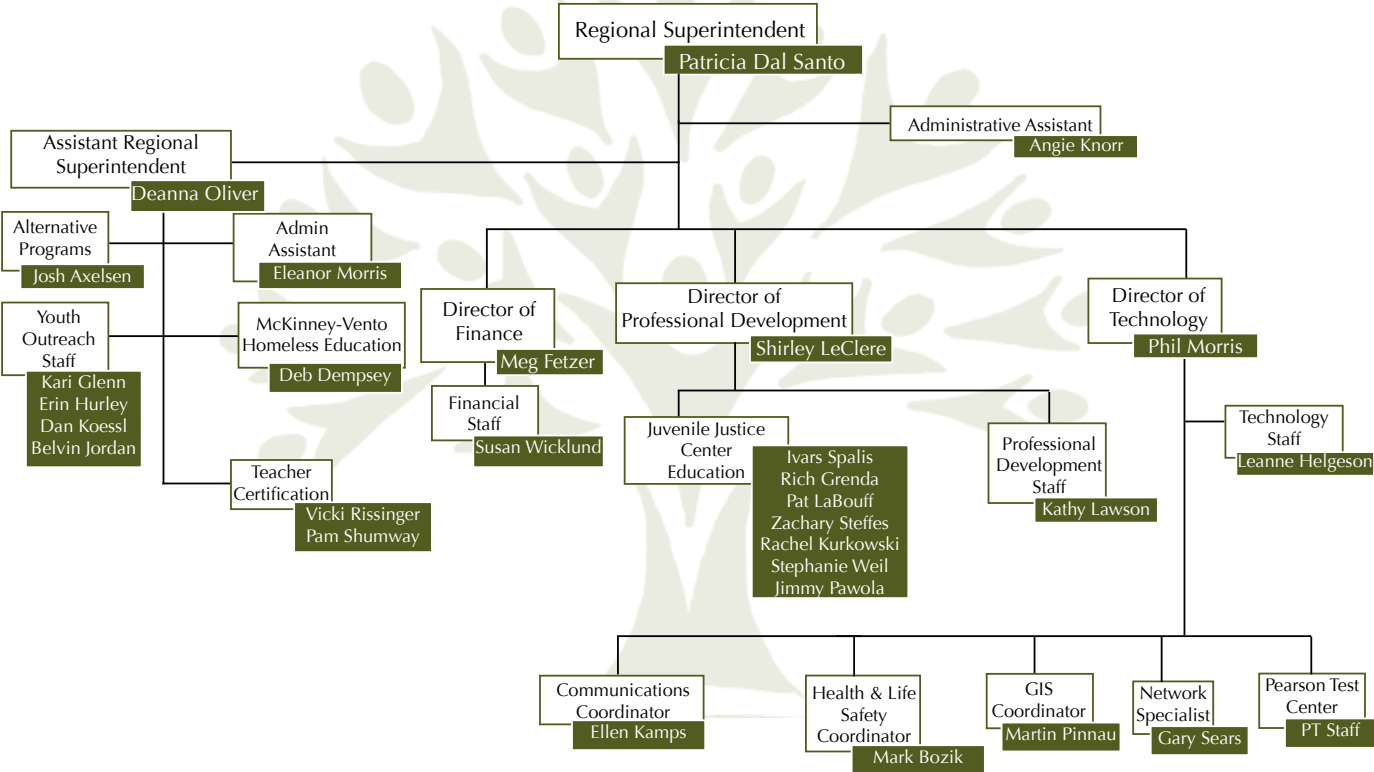
SCHOOL DISTRICT BOUNDARY MAP



The Regional Office of Education services nine school districts in Kane County. It includes District 300, Central 301, District U-46, St. Charles 303, Kaneland 302, Geneva 304, Batavia 101, Aurora West 129, and Aurora East 131.



REGIONAL OFFICE OF EDUCATION ORGANIZATIONAL CHART 2015-2016



Access the staff
directory here:
<http://goo.gl/aROudi>

ALTERNATIVE PROGRAMS

Deanna Oliver, Assistant Superintendent • doliver@kaneroe.org

Our alternative programs department assists with at-risk youth and their families facing atypical circumstances within the school system, whether it be homelessness, truancy, expulsion, or delinquency. As stated by the Illinois State Board of Education, regional offices of education are also responsible for investigating noncompliance within private, homeschool arrangements.

TRUANCY PREVENTION/INTERVENTION PROGRAM

In 2015-2016 the Regional Office of Education completed the 31st year of the Kane County Truancy Prevention Program. Youth Outreach Workers (truant officers) collaborate with schools to advocate for students and parents to ensure consistent school attendance. Kane County had 1,769 official referrals from our local schools requesting truancy assistance from our staff.

Services	2015-2016
School Visits	1,803
Home Visits	360
Student Contacts	3,045
Community Agency Contacts	120
School Conferences	217
Regional Conferences	36
Juvenile Court Cases	17
Adult Court Cases	2

Source of Referrals by District	2015-2016
U-46 Elgin	634
101 Batavia	57
129 West Aurora	253
131 East Aurora	483
300 Dundee/Carpentersville	261
301 Central	17
302 Kaneland	15
303 St. Charles	41
304 Geneva	8
Total	1,769
By Grade Level	
Elementary K-5	701
Middle School	420
High School	648
Other	0
By Gender	
Males	850
Females	919



DROPOUT INTERVENTION PROGRAM

The Kane County Dropout Intervention Program completed its 28th year in the 2015-2016 school year. This program reaches out to those individuals who have dropped out of school for a variety of reasons. Information is provided to them regarding continuing their education in some manner through returning to school, obtaining a GED or vocational programming.



ALTERNATIVE PROGRAMS

Deanna Oliver, Assistant Superintendent • doliver@kaneroe.org

REGIONAL SAFE SCHOOLS PROGRAM (RSSP)

This is a cooperative effort between the Regional Office of Education and the local school districts. The programs within school districts are designed to meet local needs. In 2015-2016, 194 students were served through this program. Without this program, those students would not have received an education and most likely would have become dropouts.

HIGH SCHOOL EQUIVALENCY (HSE)

The High School Equivalency (HSE) Tests are completed at the ROE's Pearson VUE Testing Center. The test center offers computer-based tests to those who are 17 years of age or older in English or Spanish.

The HSE test takes about 7.25 hours and contains four sections:

- Reasoning Through Language Arts (including a 10 minute break): 150 mins
- Mathematical Reasoning: 90 mins
- Science: 90 mins
- Social Studies: 90 mins

A passing score of 150 is required for each subject. A total score of 600 or higher is required to receive the HSA certificate. The final component of the HSE test is the passing of the US Constitution test. This test is offered for free at the ROE and is completed on a computer.

JUVENILE JUSTICE CENTER EDUCATION PROGRAM

To guarantee students in juvenile detention continue to be educated and make a successful transition back into their public school program, the Kane County Regional Office of Education runs the Kane County Juvenile Justice Center Education Program. An agreement between the St. Charles School District, the Chief Judge and the Kane County Regional Office of Education makes this possible. Certified teachers give daily instruction year-round in language arts, math, science and social studies.



HOMESCHOOLING

The Regional Office of Education serves as a resource to those parents who are interested in homeschooling their children. Information is shared with the parents to assist them. A request is made for parents to register with the Regional Office as a homeschooling parent and assure that education is being provided to their children. There are no fees collected for resource information.

HOMELESS EDUCATION

Deanna Oliver, Assistant Superintendent • doliver@kaneroe.org

Homeless children and youth face numerous obstacles in obtaining an education. All children, including homeless, are entitled to a free public education. The goal of the Kane County Homeless Education Program is to assist the school districts to ensure equal educational access for all homeless children so that each student will have the opportunity to succeed in school programs.

EQUAL CHANCE PROGRAM

The federal McKinney-Vento Act requires school districts to be proactive in finding homeless children who are not attending school and identifying which children and youth are homeless.

For the 2015-2016 school year the ROE Equal Chance Program provided:

- Technical assistance to all 9 Kane County School District Liaisons
- 15 trainings to all school staff including 4 social service agencies
- 9 Administrators' Academies
- Collaborated with members of 16th Judicial Family Violence Court Council to provide an Administrator Academy and Institute Day offering on The Impact of Violence on Education/Erin's Law and Mandated Reporting
- Facilitated 40 parent meetings
- Met with 45 students several times throughout the year to offer supportive services
- Assisted 12 students to complete FAFSA
- Weekly meetings/workshops with Community Crisis Center Clients
- Collaborated with ECC, U-46, D300, Community Crisis Center for the 4th Annual Project Backpack Back To School Fair in distributing 2,500 backpacks filled with school supplies and attended by 32 social service agencies
- Distributed Christmas gifts donated by churches, Renaissance Foundation and Kane ROE to 250 children
- Distributed 50 Thanksgiving and Easter food baskets to Kane County families
- Facilitated tutoring for 20 homeless students in Kane County
- Assisted unaccompanied homeless youth to obtain health benefits, physicals and other benefits
- Partnered with U-46, D300, and Elgin YWCA for 5th annual Cinderella's Closet to provide prom dresses for Kane County students in need.
- For the 2015-2016 school year, school districts in Kane County identified, served and reported 1,766 homeless students.

Affiliations 2015-2016 School Year

- Attends and is on the Board, Steering Committee and Ranking Committee of the Kane County Continuum of Care
- Area Planning Meeting Committee member
- Member the 16th Judicial Family Violence Coordinating Council.
- Participating in U-46 alignment process for Trauma Informed practices.
- Belong to the Elgin Partnership for Early Learning group on the communications taskforce (newly awarded innovation zone).
- Collaborate and participate in planning for on the Aurora SPARK (Innovation Zone program)
- United Way of Elgin grant ranking committee .



BUSINESS OFFICE

Meg Fetzer, Director of Finance • mfetzer@kaneroe.org

A portion of the funds for the operating budget of the Kane County Regional Office of Education is provided by the Kane County Government. The salaries for the Regional Superintendent and the Assistant Regional Superintendent are paid by the State of Illinois. The majority of funding for the operating budget for the office comes from competitive private, state, and federal grants. The following budget figures are based on the county's fiscal year, which runs from December 1st through November 30th.

KANE COUNTY BUDGET ESTIMATES FY 2015-2016

Line Item	Budgeted Amount FY15	Budgeted Amount FY16	Percent of Change
Personnel Services			
Full Time Salaries	\$252,717.00	\$252,513.00	0.00%
Benefits	\$35,817.00	\$32,027.00	-10.58%
Consulting	\$6,125.00	\$5,575.00	-8.98%
Software - licensing	\$10,000.00	\$12,000.00	20.00%
Conference & Meetings	\$ -	\$ -	
Mileage Expense	\$ -	\$ -	
Association Dues	\$ -	\$ -	
Commodities			
Office Supplies	\$750.00	-	100.00%
Data Processing Supplies	\$700.00	-	100.00%
Books & Subscriptions			
Operating Supplies	-	-	-0.00%
Totals	\$306,109.00	\$302,134.00	-1.30%

BUSINESS OFFICE

Meg Fetzer, Director of Finance • mfetzer@kaneroe.org

INSTITUTE FUND FINANCIAL REPORT JULY 1, 2015 - JUNE 20, 2016

All certificate registration fees and a portion of renewal and duplicate fees are to be kept by the Regional Superintendent and deposited into the Institute Fund. The expenditure of these funds is very restricted and is used to defray expenses incidental to teachers' institutes, workshops, or meetings of a professional nature that are designed to promote the professional growth of teachers, which has been approved by the Regional Superintendent.

Institute Fund Financial Report July 1, 2015 - June 30, 2016
Unaudited

Beginning Fund Balance, July 1, 2014		967,863.00
Receipts		
License Registration	220,199.00	
Interest	1,091.10	
Educator of the Year	15,688.00	
Total Receipts	236,978.10	
Disbursements		
Other Purchased Services	46,321.69	
Operating Expense	20,740.05	
Professional & Technical Services	49,734.32	
Total Disbursements	116,796.06	120,182.04
Ending Fund Balance, June 30, 2016		1,088,045.04



PARTNERSHIPS

The Regional Office of Education is active in establishing partnerships with schools, networks with districts, and investments in local & statewide nonprofit organizations.

NETWORKS

Networks provide mutual assistance and support which facilitates sharing of information and services among individuals and groups. Constant feedback and strong participation indicate that networks are serving the nine Kane County school districts and their staff. The networks share best practices, common problems, and collaborate on professional development. The networks are prominently mentioned as a benefit for new members as they gain expertise from experienced colleagues throughout the region.

The ROE has established the following networks with the nine K-12 school districts:

- Superintendents
- High School Principals
- Regional Safe School Principals
- Kane County Learning Leaders (directors of curriculum and instruction)
- Kane County Human Resources Consortium (human resources directors)
- Facilities Managers
- Gifted Education Directors
- Northern Illinois Association w/ Special Education Directors
- Reading Leaders
- School Safety/Security Team
- School Health/Wellness Team
- Special Education Directors
- Technology Directors
- Transportation Directors
- Transportation Routers

KANE COUNTY HUMAN RESOURCE CONSORTIUM (KCHRC)

The Kane County Human Resource Consortium (KCHRC), formed in 2002, is a cooperative effort among the nine public K-12 school districts and the Regional Office of Education. The KCHRC is dedicated to the recruitment, selection, and professional growth of quality educators. The consortium has created a single online application process allowing applicants to submit a teaching application to all nine districts simultaneously. Learn more on teachinkane.org

ONLINE CLASSES/GRADUATE CLASSES

The Kane County Regional Office of Education, Aurora University and ASCD collaborated to develop and provide an online class for the teachers in Kane County. These classes are intentionally structured so the skills and knowledge the teachers learn can immediately be applied to the classrooms. Many graduate courses are hosted at the ROE throughout the year in evenings and/or on weekends and offered for graduate credit hours. Online classes are offered for graduate credits or professional development clock hours.

PARTNERSHIPS

OPERATION SNOWBALL

Greater Fox River Valley Operation Snowball (GFRVOS) is a community-based alcohol, tobacco, and drug use prevention program focusing on leadership development to empower youth to lead drug-free lives. The name originates from the idea that "If I can have a positive impact on you, you can have a positive impact on someone else and the effect snowballs." Out of this concept emerges "A Community of Caring" - the success of Operation Snowball.

Currently there are 14 participating high schools within Kane County. The group meets at the ROE weekly during the evening. Twice during the year they hold a weekend event which draws 150 student attendees.



SPELLING BEE

In cooperation with the Scripps National Spelling Bee, the Kane County ROE along with the Kane County Chronicle are co-sponsoring the Kane County Spelling Bee. The ROE is proud to coordinate the spelling bee for our Kane County public and non-public schools. At the beginning of each school year, all schools that register with Scripps to participate have individual school spelling bees. The winners' names are reported to the Kane County Regional Office of Education. The regional Spelling Bees are scheduled to take place in February. The winners from the regional bees have a final competition in March before one winner from Kane County proceeds to the Scripps National Spelling Bee in Washington D.C. in May. The local and regional spelling bees are coordinated and funded by the Regional Office of Education.

CASA KANE COUNTY

CASA Kane County recruits, trains and supervises community volunteers who serve as court appointed special advocates for children in court due to abuse, neglect or private guardianship. The ROE supports CASA during their annual events such as Hands Around the Courthouse and local conferences. The Assistant Superintendent serves on the Chairmans Advisory Panel and the Strategic Plan Committee.



PROFESSIONAL DEVELOPMENT

Shirley LeClere, Director of Professional Development • sleclere@kaneroe.org

The Regional Office of Education facilitates and works collaboratively with teachers and leaders to guide their continuous instructional improvements through professional development opportunities. We support a wide variety of activities including institutes, workshops, conferences, networking, technical assistance, information dissemination, and consulting to meet the needs of our schools.

ILLINOIS ADMINISTRATORS' ACADEMY

The purpose of the academy is to maintain a statewide, regionally-based network that provides opportunities for mandated professional development for school administrators. By statute, every administrator must complete a minimum of one approved academy annually and a minimum of five in each administrator certificate renewal period. Offerings included topics such as the legislative process, 7-step PERA committee guidelines, and the supervision of principal interns.



INSTITUTE DAY 2016

The ROE coordinates and sponsors a countywide institute day of learning for all educators throughout the county on the last Friday in February. Teachers, paraprofessionals, health professionals and other support staff are able to select workshops of interest to attend. Participants have access to the latest research-based practices and acquire new ideas and knowledge to help facilitate their work in teaching and learning. Workshops include topics such as essential writing strategies for Common Core, formative assessments, STEM, and discipline in the preschool classroom.

Visit our website here to learn more about Institute Day 2016:
<http://www.kaneroe.org/institute-day-2016/>



PROFESSIONAL DEVELOPMENT

Shirley LeClere, Director of Professional Development • sleclere@kaneroe.org

OTHER PROFESSIONAL DEVELOPMENT OFFERINGS

- Youth Mental Health First Aid
- Content Area Writing with Nancy Steineke
- Social Justice: Equity and Inclusion
- SAT Updates
- Have you Captured the CORE?
- Creating A Culture of Restorative Practices
- Foundational Services: Math, Science, ELA and Family Engagement
- EDU 5370 – Middle School Missions & Methods
- EDU 5440 – Adolescent Development & Learning
- EDU 5450 – Middle School Math Methods

Register for upcoming workshops and events:
<https://register.kaneroe.org>



GIFTED EDUCATION SEMINAR

The Kane County Regional Office of Education has developed and supported an ongoing gifted networking system for districts serving gifted and talented students. Teachers of gifted and talented students meet frequently throughout the school year at the ROE to share expertise and resources. The ROE hosts gifted training seminars for teachers throughout the school year and during the summer.

The seminar requires teachers to meet for six days (45 hours) to deepen their understanding of how to teach and reach gifted and talented students. The goal is to assist teachers in creating an environment that identifies gifted and talented students, addresses diverse needs, and measures student growth in the classroom.



EDUCATOR OF THE YEAR

Patricia Dal Santo, Regional Superintendent of Schools • pdalsanto@kaneroe.org

EDUCATOR OF THE YEAR

The 41st Annual Educator of the Year Awards Banquet was held at the Q Center in St. Charles on April 29, 2016. This awards banquet provides an opportunity to honor outstanding members of the education profession in Kane County and promote awareness of the quality education being provided in our schools.

Local nominating committees consisting of teachers and administrators nominate educators throughout the county. Those nominated are seen as having the respect and admiration of students, parents, and co-workers. They play active and useful roles in their communities and schools, often distinguishing themselves as leaders.

Those honored represent the dedicated service found in all of the staff throughout Kane County. This program has received enthusiastic support from regional educators, and several Kane County award recipients have been selected by the Illinois State Board of Education as outstanding teachers in Illinois.

The dinner honored 29 distinguished educators with plaques of recognition. Those who received awards of distinction were:

Educator of the Year

Holly Yee from District U46

Elementary Educator of the Year

Barbara Lillian Freeman from District 304

Middle School Educator of the Year

Linda Liana Kleiner from District 300

High School Educator of the Year

Michelle Renee Jurcenko from District 302

Regional Superintendent Award

Ryan Robinson from District 301

Administrator of the Year

Dr. Twila Denice Garza from District 131

Early Career Educator Award

Jessica Marie Weibler from District 302

Pre-School Teacher of the Year

Argelia Vivi Luna from District 131

Student Support Personnel Award

LeeAnn Rodriguez from District 101

Educational Service Personnel Award

Tina Zucker from District 303



EDUCATOR LICENSURE

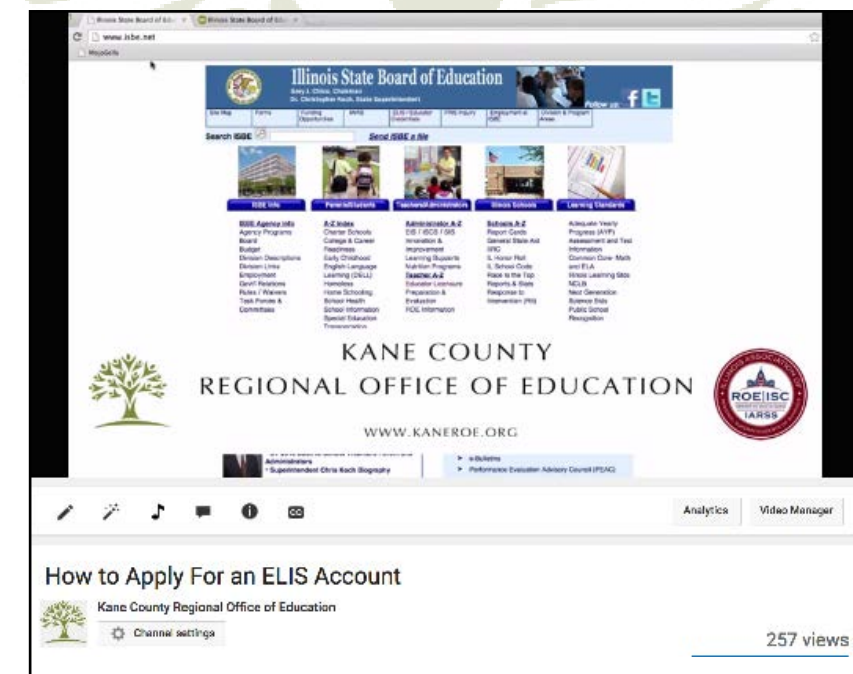
Deanna Oliver, Assistant Superintendent • doliver@kaneroe.org

The Kane County Regional Office of Education Licensure Department serves teachers and administrators with all aspects of their credential needs. The office provides instructions on how to access the Educator Licensure Information System (ELIS).

The office gives information on how to apply for licenses, endorsements, approvals; how to register and renew licenses; and how to enter professional development credit hours using ELIS. The Licensure Department also answers many questions via email and phone.

The Kane County ROE tested 73 paraprofessionals so they can obtain their NCLB Paraprofessional Approval.

The Kane County ROE hosts and maintains the Kane County Human Resource Consortium online teacher application and vacancy system for all Kane County public school districts. There were more than 9,000 active applications in the KCHRC system in 2015-2016.



**Watch more videos on the
ROE YouTube channel
<https://goo.gl/sJDBWa>**



TRANSPORTATION

Deanna Oliver, Assistant Superintendent • doliver@kaneroe.org

The Regional Office of Education is responsible for conducting the initial training that is required for all new school bus drivers prior to getting a bus permit, and the annual refresher workshop that is required in the 12-month period prior to renewing a school bus permit.

Experienced drivers must take a two-hour refresher course annually, and all new drivers must take an eight-hour course in school bus driver safety and first aid, as prescribed by the Illinois State Board of Education and administered by the Kane County ROE.

The Kane County ROE provided 11 Initial Bus Driver Training courses and 37 Refresher Trainings for 1,436 participants.

SCHOOL SAFETY & SECURITY

Phil Morris, Director of Technology • pmorris@kaneroe.org

HEALTH & LIFE SAFETY

All public school buildings and school-related buildings, including temporary/mobile classrooms, in the Kane County Regional Office of Education jurisdiction are inspected annually to assure compliance with the standards necessary to ensure the health and safety of public school students in Illinois, according to “Building Specifications for Health and Safety in Public Schools.”

Annual inspection results from each building are available at the ROE. As required by law, a record of the annual inspection is sent to the president of the school board and a summary is filed annually with the State Board of Education. In addition, results from required State Fire Marshal inspections are reported through the ROE to the school districts and the state.

Every 10 years, each public building must be resurveyed for continued compliance by an architect or engineer licensed in the State of Illinois. The “Safety Survey Report” lists any items necessary to bring the building into full and continual compliance. Upon completion of outlined work, compliance is verified by the district and a licensed architect or engineer in a report filed with the ROE, and the building is awarded a certificate of compliance.

The ROE is also responsible, through the Regional Superintendent of Schools, for statutory compliance with established standards in the construction, remodeling and demolition of public school buildings. Furthermore, the Regional Superintendent assures code compliance for temporary/mobile classroom units throughout the region in cooperation with licensed architects or engineers retained by local school districts. Records of all amendments and construction information are kept on file at the ROE.

SCHOOL SAFETY & SECURITY

Phil Morris, Director of Technology • pmorris@kaneroe.org

SCHOOL/HEALTH WELLNESS NETWORK

Since early 2009, the school health/wellness network, with representation from the nine public school districts, the ROE, and guests from the Kane County Health Department, has met monthly during the school year to review health and wellness issues. Representatives share problems, possible solutions and resources, as well as successes. Initially the network focused on identifying and listing the many different programs in the districts that impact the health and wellness of students and staff. The existence of the health/wellness team network was very helpful when concern about the H1N1 Virus, commonly known as the “Swine Flu” emerged. The network also spent time discussing and brainstorming about involvement in the Kane County “Fit Kids 2020” program.

SCHOOL SAFETY/SECURITY TEAM

Beginning in September 2007, the school safety/security team, with representation from the nine public school districts and the ROE, has met monthly during the school year to review school safety - security issues, plans, procedures and practices. Representatives share successes, problems, possible solutions and resources. Outside resources, including IMSA, County Emergency & Management Association, the county Sheriff’s Department, local police, local fire, the FBI, and security consulting firms have been utilized to foster knowledge and understanding of safety issues. The network focuses on making sure all students and staff members are prepared for emergency situations. The safety/security network stresses that law enforcement first responders and the administration of all schools must collaborate to prepare and practice for emergency situations. Training has been provided to address awareness and prevention practices of school safety issues.



FACILITY MANAGERS NETWORK

The Kane County Facility Managers Network was created in September 2008 to foster communication, cooperation and collaboration among the nine school districts and the Regional Office of Education. Attendees include school district facility managers, school district construction project managers, architects, consultants and ROE staff.

Meetings assist participants to be prepared to assure that construction projects meet all relevant codes prior to application for occupancy. The ROE conducts annual HLS inspections with facility managers and principals to assure that the maintenance of all school buildings and facilities meets code and provides a safe and secure environment for children and staff. All have an opportunity to learn what others are doing and participants may share procedures, resources, and successes in their districts.



TECHNOLOGY

Phil Morris, Director of Technology • pmorris@kaneroe.org



AREA ONE WEST LEARNING TECHNOLOGY CENTER

The Illinois State Board of Education (ISBE) established the Learning Technology Center program for the purpose of providing coordinated, statewide support and infrastructure that assists school districts in planning for, implementing, assessing results and educating school staff in the use of technology and telecommunications in curricular, instructional and administrative functions. [More information on the Learning Technology Center program can be found here.](#) The Kane County Learning Technology Center has provided the following services using funding from the ISBE.

- Acted as Area One Lead representing Lake, Cook, DuPage, Kane, Will, Grundy, and Kendall Counties
- Attending statewide meetings
- Facilitated or assisted schools with Technology Planning
- Acted as a support layer for implementation of computer based PARCC testing
- Communicated information to districts about Education Superhighway partnership with the ISBE
- Help schools with the monitoring, management, and troubleshooting of their WANs
- Assist schools with [E-Rate applications to the federal government](#).
- Provide support and training for online resources available to all Kane County schools.

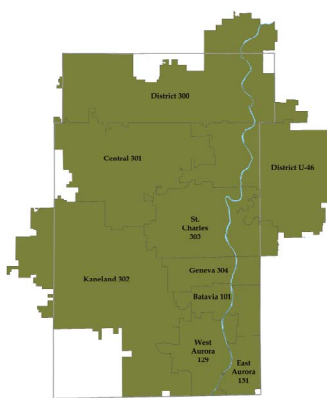
FINGERPRINTING

The Regional Office of Education provides fingerprinting services for all our public school districts. The Illinois School Code requires all new employees to have both a State and FBI criminal background check. Last year, approximately 4,000 people were fingerprinted. The electronic submission of fingerprints allows the ROE to typically receive results within 24 hours, so a school district can begin employment immediately.



GEOGRAPHIC INFORMATION SYSTEM

The Kane County Regional Office of Education offers school districts the opportunity to request the assistance of its geographic information system (GIS). The GIS allows for the creation of custom maps and geographic analyses for school districts. GIS has proven to be a useful tool for Kane County school districts in the matter of attendance boundaries. GIS allows school districts to create and take advantage of updatable maps to address geographic concerns. Some transportation concerns such as bus routes, bus stops, and hazardous roads can be represented in the GIS.



TECHNOLOGY

Phil Morris, Director of Technology • pmorris@kaneroe.org

LEARNING TECHNOLOGY SERVICES

In addition to being the Area One West Learning Technology Center, the Regional Office of Education integrates support and training in many areas of technology. A needs assessment is given during the year at monthly technology coordinator meetings. Monthly technology coordinator meetings are used to communicate information from the Illinois State Board of Education, and also allow dialogue between districts.

Learning Technology Services also provides technical support within the Regional Office of Education to maintain connectivity to the Illinois State Board of Education electronic systems including Teacher Certification, Administrators' Academy, and GED. Learning Technology Services supports the technology implementation at the Kane County Juvenile Justice Center (JJC).

During this past year the following services have been provided:

- Online registration for workshops with digital encryption
- Consultation for KCHRC online Application
- Maintenance of LiveScan fingerprint equipment for fingerprinting of new teachers and bus drivers in Kane County
- Hosting specialized training for school districts
- Continuing support for Follett Destiny
- Coordinating Palo Alto Firewall and Filter cooperative licensing
- Coordinating United Streaming video cooperative licensing
- Support HLS system for school inspections as well as further statewide development
- Developed online compliance system for all ROEs to use

Phil Morris, Director is also on Illinois Learning Technology Purchase Program Advisory Board, Illinois Virtual School Advisory Board, and the IlliniCloud Advisory Board as well as President of the Illinois Educational Technology Leaders.

PEARSON VUE TESTING CENTER

The ROE is an official Pearson VUE Testing Center that is a temperature-controlled environment equipped with modern technology for maximum concentration during the testing process. The ROE offers a variety of tests include the GED, ATP, and TAP along with a variety of other professional certification tests. The ROE offers weekend and evening testing hours.





FINANCE REPORTS

Meg Fetzer, Director of Finance • mfetzer@kaneroe.org

CERTIFIED PERSONNEL

DISTRICT	TOTAL CERTIFIED (INCLUDE PART TIME)	DOCTORS & ED SPEC/ CAS DEGREE	MASTERS DEGREE	BACHELORS DEGREE	TEACHERS (INCLUDE PART TIME)	AVG. SAL FULL-TIME CERTIFIED TEACHERS	AVG. SAL FULL-TIME CERTIFIED ADMIN
U -46 ELGIN	2535	36	1956	543	523	\$66,433	\$102,600
101 BATAVIA	498	15	384	99	97	\$67,961	\$102,569
129 AURORA WEST	958	18	727	213	185	\$66,996	\$87,877
131 AURORA EAST	992	17	607	368	203	\$56,000	\$89,000
300 DUNDEE	1541	49	1040	452	378	\$57,748	\$102,465
301 CENTRAL	298	11	177	110	44	\$56,374	\$97,493
302 KANELAND	382	4	263	115	82	\$65,270	\$102,592
303 ST CHARLES	1075	34	868	173	197	\$70,684	\$115,871
304 GENEVA	479	14	352	113	140	\$69,384	\$109,587
TOTAL FY2016	8,758	198	6,374	2,186	1,849	\$64,094	\$101,117
		2.26%	72.78%	24.96%	21.11%		
TOTAL FY2015	8,766	200	6,334	2,224	1,756	\$61,713	\$98,977
		2.28%	72.26%	25.37%	20.03%		

Source: Meg Fetzer, CPA, mfetzer@kaneroe.org

FINANCE REPORTS

Meg Fetzer, Director of Finance • mfetzer@kaneroe.org

CERTIFIED PERSONNEL (CONT.)

DISTRICT	AVG. YRS. EXPERIENCE TEACHING IN ILLINOIS	ENROLLMENT PER CERTIFIED STAFF MEMBER FY2016	ENROLLMENT PER CERTIFIED STAFF MEMBER FY2015	TEACHER TO ADMIN STAFF RATIO	SUPPORT STAFF	ENROLLMENT TO SUPPORT STAFF RATIO	ENROLLMENT PER FALL HOUSING RPT FY2015
U -46 ELGIN	16.0	15.7	15.5	15.8	1,982	20.1	39,788
101 BATAVIA	12.5	11.8	12.6	14.2	86	36.2	5,883
129 AURORA WEST	8.0	13.0	13.1	10.2	82	28.7	12,421
131 AURORA EAST	8.8	14.5	14.0	6.8	146	106.0	14,387
300 DUNDEE	11.2	13.5	14.1	13.4	425	48.5	20,831
301 CENTRAL	10.3	12.8	13.0	18.6	228	16.1	3,810
302 KANELAND	9.3	11.8	12.3	16.6	196	21.0	4,508
303 ST CHARLES	12.5	12.0	12.0	8.8	419	30.0	12,926
304 GENEVA	11.0	12.1	12.2	17.1	243	25.3	5,811
AVERAGE	11.1	13.0	13.2	13.5	3,807	31.6	120,365
PRIOR YEAR	11.3	14.0	14.0	16.6	3,857	31.6	121,785

Source: Meg Fetzer, CPA, mfetzer@kaneroe.org



FINANCE REPORTS

Meg Fetzer, Director of Finance • mfetzer@kaneroe.org

CLASSROOM BUILDINGS IN Use JULY 1, 2015 - JUNE 30, 2016

DISTRICT	ELEMENTARY SCHOOL		MIDDLE OR JR HIGH SCHOOL		SENIOR HIGH SCHOOL		MOBILE CLASSROOMS		OTHER SPECIAL ED, VOC. ED ETC.	
	FY 16	FY 15	FY 16	FY 15	FY 16	FY 15	FY 16	FY 15	FY 16	FY 15
U-46 ELGIN	40	40	8	8	5	5	21	29	5	5
101 BATAVIA	6	6	1	1	1	1	0	0	1	0
129 AURORA WEST	11	12	4	4	1	1	14	5	1	3
131 AURORA EAST	12	13	4	3	1	1	0	0	4	2
300 DUNDEE	17	17	5	5	3	3	0	0	3	4
301 CENTRAL	4	4	2	2	1	1	0	0	0	0
302 KANELAND	4	4	1	1	1	1	0	0	1	1
303 ST CHARLES	12	12	3	3	2	2	7	6	0	0
304 GENEVA	6	6	2	2	1	1	0	0	0	1
TOTAL	112	114	30	29	16	16	51	42	13	15

Source: FRIS Reports

FINANCE REPORTS

Meg Fetzer, Director of Finance • mfetzer@kaneroe.org

PUBLIC SCHOOL ENROLLMENT - SEPTEMBER 2015

FY16 Enrollment

School	FY15	FY16	Pre-K	K-5	6-8	9-12
U46 Elgin	40,221	39,788	1,302	17,409	8,841	12,236
101 Batavia	6,083	5,883	102	2,390	1,453	1,938
129 West Aurora	12,560	12,421	442	5,390	2,800	3,789
131 East Aurora	14,522	14,387	613	6,836	3,227	3,711
300 Dundee	20,757	20,831	755	9,189	4,695	6,192
301 Central	3,561	3,810	77	1,832	875	1,026
302 Kaneland	4,603	4,508	54	2,047	1,090	1,317
303 St. Charles	13,271	12,926	232	4,826	3,260	4,608
304 Geneva	5,841	5,811	84	2,336	1,448	1,943
TOTAL FY16		120,365	3,597	52,225	27,689	36,760
TOTAL FY15	121,332		3,401	53,732	27,558	36,445

Source from Fall Enrollment Counts
http://www.isbe.net/research/htmls/fall_housing.htm



FINANCE REPORTS

Meg Fetzer, Director of Finance • mfetzer@kaneroe.org

ISBE FEDERAL & STATE REVENUE - FISCAL YEAR ENDING JUNE 30, 2016

	\$ STATE AID *	\$ STATE - OTHER	\$ FEDERAL	\$ TOTAL	\$ PER ADA	\$ ADA
U-46 ELGIN	115,242,487	38,658,795	33,106,571	187,007,853	5,242	35,674
101 BATAVIA	20,803,921	5,447,716	1,093,883	9,345,520	1,606	5,821
129 AURORA WEST	39,382,682	13,238,112	12,447,868	65,068,662	5,478	11,879
131 AURORA EAST	95,092,518	15,238,112	17,845,943	128,305,830	10,133	12,663
300 DUNDEE	34,166,479	18,433,338	14,300,595	66,900,412	3,587	18,652
301 CENTRAL	4,614,081	3,079,983	428,544	8,122,608	2,310	3,517
302 KANELAND	5,105,422	5,175,119	475,951	10,756,492	2,495	4,312
303 ST CHARLES	5,254,205	9,681,042	1,910,683	16,845,930	1,364	12,349
304 GENEVA	2,301,663	4,224,926	425,509	6,952,097	1,233	5,682
						110, 549
TOTAL FY2016	303,963,458	113,306,399	82,035,547	499,305,404	4,517	
TOTAL FY2015	226,860,436	110,854,049	68,971,844	406,686,329	3,715	
CHANGE	25.4%	2.2%	15.9%	18.5%	17.7%	

X

* Source: Additional Financial and District information may be obtained at www.isbe.net