

REGIONAL SUPERINTENDENT  
PATRICIA DAL SANTO



REGIONAL OFFICE OF EDUCATION  
KANE COUNTY

# Annual Report 2014-15





REGIONAL OFFICE OF EDUCATION  
KANE COUNTY



# CONTENTS

Intro from Superintendent.....	Pg. 3
Our Districts.....	Pg. 4
School District Boundary Map.....	Pg. 5
Organizational Chart.....	Pg. 6
Alternative Programs.....	Pg. 7-8
Homeless Education.....	Pg. 9
Business Office.....	Pg. 10-11
Partnerships.....	Pg. 12-13
Professional Development.....	Pg. 14-15
Educator of the Year.....	Pg. 16
Certification.....	Pg. 17
Transportation.....	Pg. 18
School Safety & Security.....	Pg. 19-20
Technology.....	Pg. 21-22
Finance Reports.....	Pg. 23-27





**KANE COUNTY  
REGIONAL OFFICE OF EDUCATION  
FISCAL YEAR 2015 ANNUAL REPORT**

As superintendent of the Kane County Regional Office of Education in Kane County, Illinois, I hereby submit the annual report of the activities of this office from July 1, 2014 through June 30, 2015.

This report is an overview and is not inclusive of all the services and collaborative partnerships that the Regional Office of Education provides.

This report uses information from our programs, services, and end-of-year school reports from the Illinois State Board of Education. We hope it will help you better understand the work of our office and the educators of Kane County.

As a community, our duty is to ensure our school buildings are safe, nurturing places of learning where all people, young and old, are valued and respected.

Sincerely,

A handwritten signature in black ink that reads "Patricia Dal Santo". The signature is written in a cursive style.

**Patricia Dal Santo  
Regional Superintendent of Schools  
Kane County Regional Office of Education**



# OUR KANE COUNTY SCHOOL DISTRICTS



School District U-46  
Dr. Kenneth Arndt, Interim Supt.  
Mr. Tony Sanders, CEO  
355 E. Chicago Street,  
Elgin, IL 60120  
Phone: 847-888-5000  
[www.u-46.org](http://www.u-46.org)



School District 301  
Dr. Todd Stirn, Superintendent  
275 South Street, Box 396  
Burlington, IL 60109  
Phone: 847-464-6005  
[www.burlington.k12.il.us](http://www.burlington.k12.il.us)



School District 101  
Dr. Lisa Hichens, Superintendent  
335 W. Wilson Street  
Batavia, IL 60510  
Phone: 630-937-8800  
[www.bps101.net](http://www.bps101.net)



School District 302  
Dr. Todd Leden, Superintendent  
47W326 Keslinger Road  
Maple Park, IL 60151  
Phone: 630-365-5111  
[www.kaneland.org](http://www.kaneland.org)



School District 129  
Dr. Jeff Craig, Superintendent  
80 S. River Street  
Aurora, IL 60506  
Phone: 630-301-5000  
[www.sd129.org](http://www.sd129.org)



School District 303  
Dr. Don Schlomann, Superintendent  
201 S. 7th Street  
St. Charles, IL 60174  
Phone: 331-228-2000  
[www.d303.org](http://www.d303.org)



School District 131  
Dr. Michael Popp, Superintendent  
417 Fifth Street  
Aurora, IL 60505  
Phone: 630-301-5000  
[www.d131.org](http://www.d131.org)



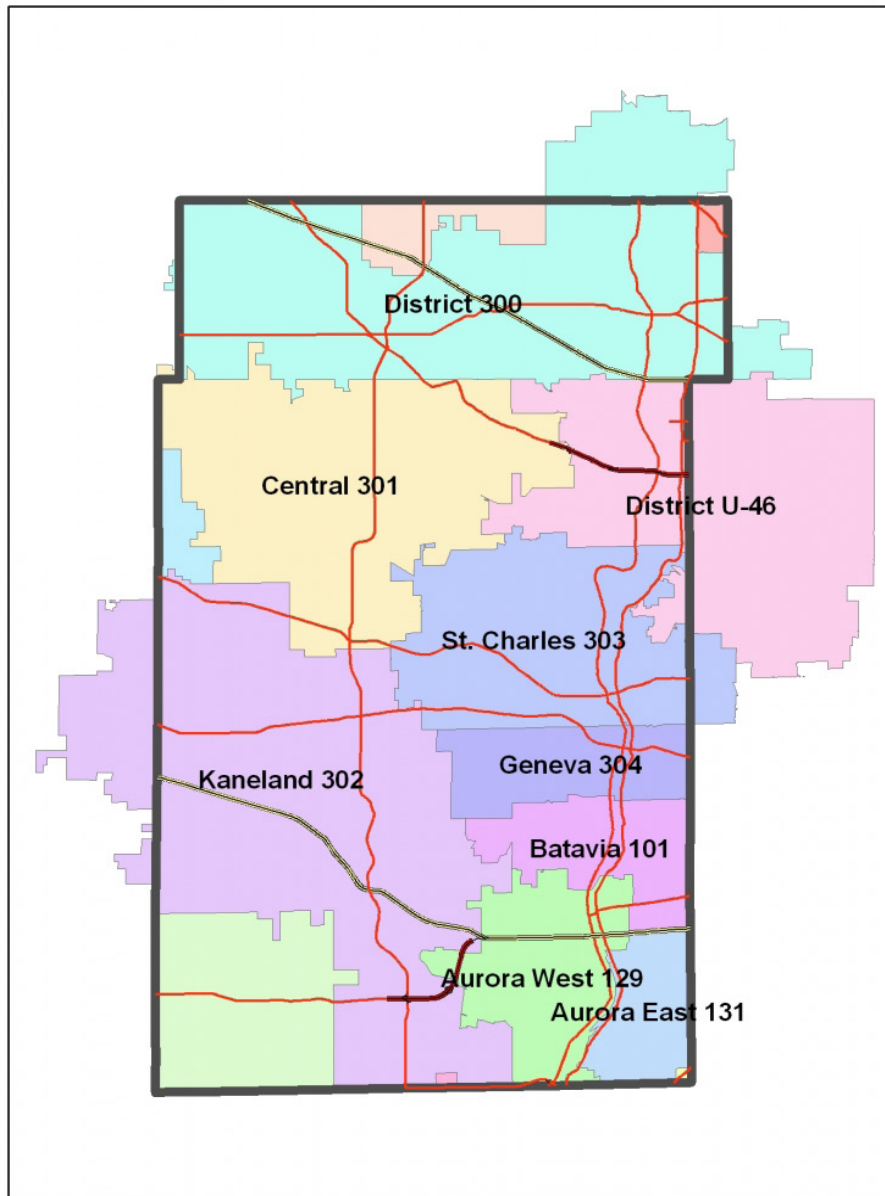
School District 304  
Dr. Kent Mutchler, Superintendent  
227 North Fourth Street  
Geneva, IL 60134  
Phone: 630-463-3000  
[www.geneva304.org](http://www.geneva304.org)



School District 300  
Mr. Fred Heid, Superintendent  
2550 Harnish Drive  
Algonquin IL 60102  
Phone: 847-551-8300  
[www.d300.org](http://www.d300.org)

Access the public school  
directory on the ROE  
website here:  
<http://goo.gl/ahciXL>

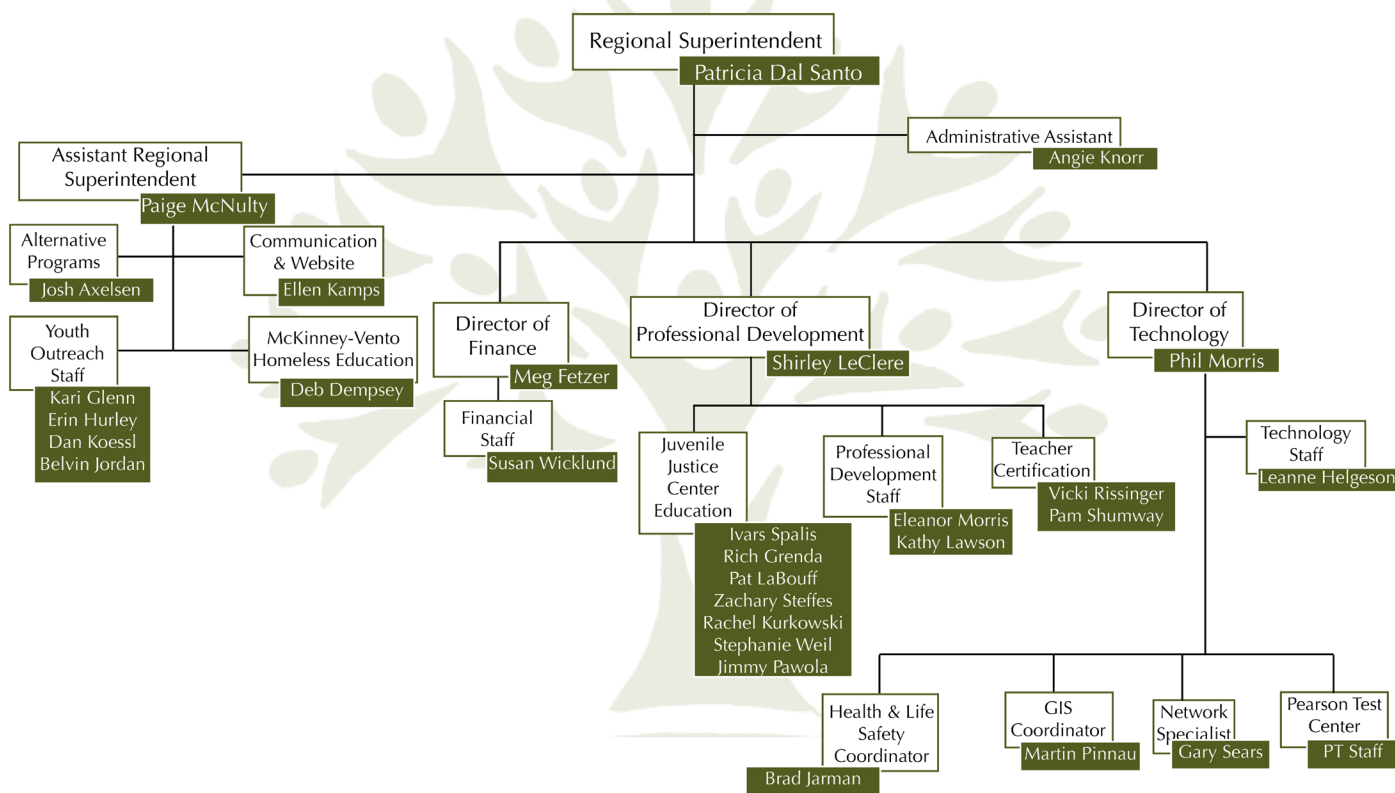
## SCHOOL DISTRICT BOUNDARY MAP



The Regional Office of Education services nine school districts in Kane County. It includes District 300, Central 301, District U-46, St. Charles 303, Kaneland 302, Geneva 304, Batavia 101, Aurora West 129, and Aurora East 131.



# REGIONAL OFFICE OF EDUCATION ORGANIZATIONAL CHART 2014-2015



Access the staff  
directory here:  
<http://goo.gl/aROudi>

# ALTERNATIVE PROGRAMS

Pat Dal Santo, Regional Superintendent • pdalsanto@kaneroe.org

**Our alternative programs department assists with at-risk youth and their families facing atypical circumstances within the school system, whether it be homelessness, truancy, expulsion, or delinquency. As stated by the Illinois State Board of Education, regional offices of education are also responsible for investigating noncompliance within private, homeschool arrangements.**

## TRUANCY PREVENTION/INTERVENTION PROGRAM

In 2014-2015 the Regional Office of Education completed the 30th year of the Kane County Truancy Prevention Program. Youth Outreach Workers (truant officers) collaborate with schools to advocate for students and parents to ensure consistent school attendance. Kane County had 1,716 official referrals from our local schools requesting truancy assistance from our staff.

Services	2014-2015
School Visits	1,703
Home Visits	321
Student Contacts	2,967
Community Agency Contacts	125
School Conferences	211
Regional Conferences	27
Juvenile Court Cases	21
Adult Court Cases	1

Source of Referrals by District	2014-2015
U-46 Elgin	578
101 Batavia	33
129 West Aurora	197
131 East Aurora	469
300 Dundee/Carpentersville	370
301 Central	9
302 Kaneland	14
303 St. Charles	41
304 Geneva	5
Total	1,716
<b>By Grade Level</b>	
Elementary K-5	691
Middle School	453
High School	572
Other	0
<b>By Gender</b>	
Males	881
Females	835



## DROPOUT INTERVENTION PROGRAM

The Kane County Dropout Intervention Program completed its 27th year in the 2014-2015 school year. This program reaches out to those individuals who have dropped out of school for a variety of reasons. Information is provided to them regarding continuing their education in some manner through returning to school, obtaining a GED or vocational programming.





# ALTERNATIVE PROGRAMS

Pat Dal Santo, Regional Superintendent • pdalsanto@kaneroe.org

## REGIONAL SAFE SCHOOLS PROGRAM (RSSP)

This is a cooperative effort between the Regional Office of Education and the local school districts. The programs within school districts are designed to meet local needs. In 2014-2015, 194 students were served through this program. Without this program, those students would not have received an education and most likely would have become dropouts.

## GENERAL EDUCATIONAL DEVELOPMENT (GED)

The General Education Development (GED) Tests are completed at the ROE's Pearson VUE Testing Center. The test center offers computer-based tests to those who are 17 years of age or older in English or Spanish. Between June 30, 2014 - July 1, 2015, the ROE administered 576 tests.

### The GED test takes about 7.25 hours and contains four sections:

Reasoning Through Language Arts (including a 10 minute break): 150 mins

Mathematical Reasoning: 90 mins

Science: 90 mins

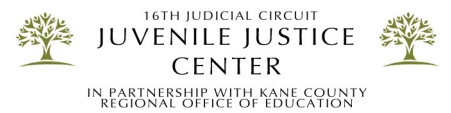
Social Studies: 90 mins



A passing score of 150 is required for each subject. A total score of 600 or higher is required to receive the GED certificate. The final component of the GED test is the passing of the US Constitution test. This test is offered for free at the ROE and is completed on a computer.

## JUVENILE JUSTICE CENTER EDUCATION PROGRAM

To guarantee students in juvenile detention continue to be educated and make a successful transition back into their public school program, the Kane County Regional Office of Education runs the Kane County Juvenile Justice Center Education Program. An agreement between the St. Charles School District, the Chief Judge and the Kane County Regional Office of Education makes this possible. Certified teachers give daily instruction year-round in language arts, math, science and social studies.



## HOMESCHOOLING

The Regional Office of Education serves as a resource to those parents who are interested in home schooling their children. Information is shared with the parents to assist them. A request is made for parents to register with the Regional Office as a home schooling parent and assure that education is being provided to their children. There are no fees collected for resource information.



# HOMELESS EDUCATION

Pat Dal Santo, Regional Superintendent • pdalsanto@kaneroe.org

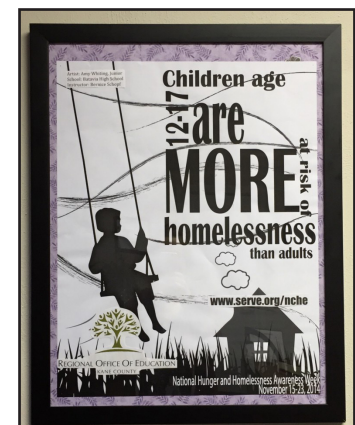
**Homeless children and youth face numerous obstacles in obtaining an education. All children, including homeless, are entitled to a free public education. The goal of the Kane County Homeless Education Program is to assist the school districts to ensure equal educational access for all homeless children so that each student will have the opportunity to succeed in school programs.**

## EQUAL CHANCE PROGRAM

The federal McKinney-Vento Act requires school districts to be proactive in finding homeless children who are not attending school and identifying which children and youth are homeless.

### For the 2014-2015 school year the ROE Equal Chance Program provided:

- Technical assistance to all 9 Kane County School District Liaisons
- 10 trainings to all school staff including 4 social service agencies
- 10 Administrators' Academies
- Collaborated with members of 16th Judicial Family Violence Court Council to provide an Administrator Academy and Institute Day offering on The Impact of Violence on Education/Erin's Law and Mandated Reporting
- Facilitated 40 parent meetings
- Met with 45 students several times throughout the year to offer supportive services
- Assisted 12 students to complete FAFSA
- Weekly meetings/workshops with Community Crisis Center Clients
- Collaborated with ECC, U-46, D300, Community Crisis Center for the 4th Annual Project Backpack Back To School Fair in distributing 2,500 backpacks filled with school supplies and attended by 32 social service agencies
- Distributed Christmas gifts donated by churches, Renaissance Foundation and Kane ROE to 255 children
- Distributed 50 Thanksgiving and Easter food baskets to Kane County families
- Facilitated tutoring for 15 homeless students in Kane County
- Assist unaccompanied homeless youth to obtain health benefits, physicals and other benefits they may be entitled to
- Partnered with U-46, D300, and Elgin YWCA for 5th annual Cinderella's Closet to provide prom dresses for Kane County students in need





# BUSINESS OFFICE

Meg Fetzer, Director of Finance • mfetzer@kaneroe.org

A portion of the funds for the operating budget of the Kane County Regional Office of Education is provided by the Kane County Government. The salaries for the Regional Superintendent and the Assistant Regional Superintendent are paid by the State of Illinois. The majority of funding for the operating budget for the office comes from competitive private, state, and federal grants. The following budget figures are based on the county's fiscal year, which runs from December 1st through November 30th.

## KANE COUNTY BUDGET ESTIMATES FY 2014-2015

Line Item	Budgeted Amount FY14	Budgeted Amount FY15	Percent of Change
<b>Personnel Services</b>			
Full Time Salaries	\$252,717.00	\$252,717.00	0.00%
Benefits	\$34,182.00	\$35,817.00	4.78%
Consulting	\$3,500.00	\$6,125.00	75.00%
Software - licensing	\$5,000.00	\$10,000.00	100.00%
Conference & Meetings	\$3,500.00	\$ -	-100.00%
Mileage Expense	\$1,120.00	\$ -	-100.00%
Association Dues	\$2,000.00	\$ -	-100.00%
<b>Commodities</b>			
Office Supplies	\$750.00	\$750.00	0.00%
Data Processing Supplies	\$1,000.00	\$700.00	-30.00%
Books & Subscriptions			
Operating Supplies	\$705.00	\$ -	-100.00%
<b>Totals</b>	<b>\$304,474.00</b>	<b>\$306,109.00</b>	<b>0.54%</b>

# BUSINESS OFFICE

Meg Fetzer, Director of Finance • mfetzer@kaneroe.org

## INSTITUTE FUND FINANCIAL REPORT JULY 1, 2014 - JUNE 20, 2015

All certificate registration fees and a portion of renewal and duplicate fees are to be kept by the Regional Superintendent and deposited into the institute fund. The expenditure of these funds is very restricted and is used to defray expenses incidental to teachers' institutes, workshops, or meetings of a professional nature that are designed to promote the professional growth of teachers, which has been approved by the Regional Superintendent.

### Institute Fund Financial Report July 1, 2014 - June 30, 2015 Unaudited

<b>Beginning Fund Balance, July 1, 2014</b>		<b>892,776.00</b>
<b>Receipts</b>		
License Registration	123,287.00	
Interest	650.30	
Educator of the Year	19,856.00	
<b>Total Receipts</b>	<b>143,793.30</b>	
<b>Disbursements</b>		
Other Purchased Services	30,988.07	
Operating Expense	23,791.93	
Professional & Technical Services	64,927.30	
<b>Total Disbursements</b>	<b>119,707.30</b>	<b>24,086.00</b>
<b>Ending Fund Balance, June 30, 2015</b>		<b>916,862.00</b>



# PARTNERSHIPS

The Regional Office of Education is active in establishing partnerships with schools, networks with districts, and investments in local & statewide nonprofit organizations.

## NETWORKS

Networks provide mutual assistance and support which facilitates sharing of information and services among individuals and groups. Constant feedback and strong participation indicate that networks are serving the nine Kane County school districts and their staff. The networks share best practices, common problems, and collaborate on professional development. The networks are prominently mentioned as a benefit for new members as they gain expertise from experienced colleagues throughout the region.

The ROE has established the following networks with the nine K-12 school districts:

- Superintendents
- High School Principals
- Kane County Learning Leaders (directors of curriculum and instruction)
- Kane County Human Resources Consortium (human resources directors)
- Facilities Managers
- Gifted Education Directors
- Northern Illinois Association w/ Special Education Directors
- Reading Leaders
- School Safety/Security Team
- School Health/Wellness Team
- Special Education Directors
- Technology Directors
- Transportation Directors
- Transportation Routers

## KANE COUNTY HUMAN RESOURCE CONSORTIUM (KCHRC)

The Kane County Human Resource Consortium (KCHRC), formed in 2002, is a cooperative effort among the nine public K-12 school districts and the Regional Office of Education. The KCHRC is dedicated to the recruitment, selection, and professional growth of quality educators. The consortium has created a single online application process allowing applicants to submit a teaching application to all nine districts simultaneously. Learn more on [teachinkane.org](http://teachinkane.org)

## AURORA UNIVERSITY

The ROE and Aurora University have been working together as part of a cohort program. Students are able to take classes at the ROE that are taught by AU professors. Classes included EDU 5370 - Middle School Missions and Methods, EDU 5440 - Adolescent Development & Learning, and OEDS 5153 - Gifted Education Seminar.



# PARTNERSHIPS

## OPERATION SNOWBALL

Greater Fox River Valley Operation Snowball (GFRVOS) is a community-based alcohol, tobacco, and drug use prevention program focusing on leadership development to empower youth to lead drug-free lives. The name originates from the idea that “If I can have a positive impact on you, you can have a positive impact on someone else and the effect snowballs.” Out of this concept emerges “A Community of Caring” - the success of Operation Snowball.

Currently there are 14 participating high schools within Kane County. The group meets at the ROE weekly during the evening. Twice during the year they hold a weekend event which draws 150 student attendees.



## SPELLING BEE

In cooperation with the Scripps National Spelling Bee, the Kane County ROE along with the Kane County Chronicle co-sponsor the Kane County Spelling Bee. The ROE is proud to coordinate the spelling bee for our Kane County public and private schools. The winners from the regional bees have a final competition in March before one winner from Kane County proceeds to the Scripps National Spelling Bee in Washington D.C. in May. The local and regional spelling bees are coordinated and funded by the Regional Office of Education.



## CASA KANE COUNTY

CASA Kane County recruits, trains and supervises community volunteers who serve as court appointed special advocates for children in court due to abuse, neglect or private guardianship. The ROE supports CASA during their annual events such as Hands Around the Courthouse and local conferences.



# PROFESSIONAL DEVELOPMENT

Shirley LeClere, Director of Professional Development • sleclere@kaneroe.org

**The Regional Office of Education facilitates and works collaboratively with teachers and leaders to guide their continuous instructional improvements through professional development opportunities. We support a wide variety of activities including institutes, workshops, conferences, networking, technical assistance, information dissemination, and consulting to meet the needs of our schools.**

## ILLINOIS ADMINISTRATORS' ACADEMY

The purpose of the academy is to maintain a statewide, regionally-based network that provides opportunities for mandated professional development for school administrators. By statute, every administrator must complete a minimum of one approved academy annually and a minimum of five in each administrator certificate renewal period. Offerings included topics such as the legislative process, 7-step PERA committee guidelines, and the supervision of principal interns.



## INSTITUTE DAY 2015

The ROE coordinates and sponsors a countywide institute day of learning for all educators throughout the county on the last Friday in February. Teachers, paraprofessionals, health professionals and other support staff are able to select workshops of interest to attend. Participants have access to the latest research-based practices and acquire new ideas and knowledge to help facilitate their work in teaching and learning. Workshops include topics such as essential writing strategies for Common Core, formative assessments, STEM, and discipline in the preschool classroom.

**Visit our website here to learn more about Institute Day 2015:**  
<http://goo.gl/K2UQYU>



# PROFESSIONAL DEVELOPMENT

Shirley LeClere, Director of Professional Development • sleclere@kaneroe.org

## OTHER PROFESSIONAL DEVELOPMENT OFFERINGS

- A Series on Social and Emotional Literacy
- Implementing The Framework for Teaching in Special Education Settings
- Understanding the PARCC Tasks for 6-12 ELA
- Understanding the PARCC Tasks for 6-12 Social Studies & Science
- Student Growth Models (A Deeper Dive)
- Exploring Mathematical Practices (in the 21st Century)
- Coaching for Transfer with Rigor and Relevance
- Using Classroom Formative Assessment Effectively to Improve Student Achievement
- Writing About Reading
- Practical Non-Fiction Reading and Writing
- The Highly Engaged Inclusive Classroom: Practical Strategies to Boost Student Achievement and Motivation

**Register for upcoming workshops and events:**

<https://register.kaneroe.org>



## GIFTED EDUCATION SEMINAR

The Kane County Regional Office of Education has developed and supported an ongoing gifted networking system for districts serving gifted and talented students. Teachers of gifted and talented students meet frequently throughout the school year at the ROE to share expertise and resources. The ROE hosts gifted training seminars for teachers throughout the school year and during the summer.

The seminar requires teachers to meet for six days (45 hours) to deepen their understanding of how to teach and reach gifted and talented students. The goal is to assist teachers in creating an environment that identifies gifted and talented students, addresses diverse needs, and measures student growth in the classroom. During the 2014-2015 school year, two Gifted Education Seminars were offered throughout Kane County for 43 teachers.





# EDUCATOR OF THE YEAR

Angie Knorr, Administrative Assistant • aknorr@kaneroe.org

## EDUCATOR OF THE YEAR

The 40th Annual Educator of the Year Awards Banquet was held at the Q Center in St. Charles on May 1, 2015. This awards banquet provides an opportunity to honor outstanding members of the education profession in Kane County and promote awareness of the quality education being provided in our schools.

Local nominating committees consisting of teachers and administrators nominate educators throughout the county. Those nominated are seen as having the respect and admiration of students, parents, and co-workers. They play active and useful roles in their communities and schools, often distinguishing themselves as leaders.

Those honored represent the dedicated service found in all of the staff throughout Kane County. This program has received enthusiastic support from regional educators, and several Kane County award recipients have been selected by the Illinois State Board of Education as outstanding teachers in Illinois.

The dinner honored 44 distinguished educators with plaques of recognition. Those who received awards of distinction were:

### **Educator of the Year**

Sherry L. Douglas from District 300

### **Elementary Educator of the Year**

Susan M. Bruno from District 131

### **Middle School Educator of the Year**

Stephen Roger Renne from District 300

### **High School Educator of the Year**

Bryan Kunstman from District 302

### **Regional Superintendent Award**

Martha Behlow from District 304

### **Administrator of the Year**

Dr. Alicia Marie Honnert from District 303

### **Student Support Personnel Award**

Janice Finke from District 303

### **Educational Service Personnel Award**

Michelle S. Lage from District 101





# EDUCATOR LICENSURE

Pat Dal Santo, Regional Superintendent • pdalsanto@kaneroe.org

**The Kane County Regional Office of Education Licensure Department serves teachers and administrators with all aspects of their credential needs. The office provides instructions on how to access the Educator Licensure Information System (ELIS).**

The office gives information on how to apply for licenses, endorsements, approvals; how to register and renew licenses; and how to enter professional development credit hours using ELIS. The Licensure Department also answers many questions via email and phone.

The Kane County ROE tested 78 paraprofessionals so they can obtain their NCLB Paraprofessional Approval.

The Kane County ROE hosts and maintains the Kane County Human Resource Consortium online teacher application and vacancy system for all Kane County public school districts. There were more than 9,000 active applications in the KCHRC system in 2014-2015.

In addition to helping educators through email, fax and phone, the licensure department created two YouTube videos about using ELIS.

The screenshot shows a web browser displaying the Illinois State Board of Education website. The main content area features the Kane County Regional Office of Education logo and the URL www.kaneroe.org. Below the logo, there is a navigation menu with categories like 'IBSE Info', 'Paraprofessionals', 'Teacher/Administration', 'Illinois Schools', and 'Learning Standards'. A search bar is also visible. At the bottom of the page, there is a YouTube video player titled 'How to Apply For an ELIS Account' with 257 views. The video player includes a 'Channel settings' button and a 'Video Manager' button.

**Watch more on the ROE  
YouTube channel  
<https://goo.gl/sJDBWa>**



# TRANSPORTATION

Pat Dal Santo, Regional Superintendent • pdalsanto@kaneroe.org

**The Regional Office of Education is responsible for conducting the initial training that is required for all new school bus drivers prior to getting a bus permit, and the annual refresher workshop that is required in the 12-month period prior to renewing a school bus permit.**

Experienced drivers must take a two-hour refresher course annually, and all new drivers must take an eight-hour course in school bus driver safety and first aid, as prescribed by the Illinois State Board of Education and administered by the Kane County ROE.

The Kane County ROE provided 15 Initial Bus Driver Training courses and 59 Refresher Trainings for 1,612 participants.

During fall of 2014, Regional Superintendent Patricia Dal Santo also recorded a PSA on school bus safety that was aired on Elgin, Batavia and Aurora public access television.



**Watch the PSA on the ROE  
YouTube channel:  
<https://goo.gl/VbC1P4>**



# SCHOOL SAFETY & SECURITY

Phil Morris, Director of Technology • pmorris@kaneroe.org

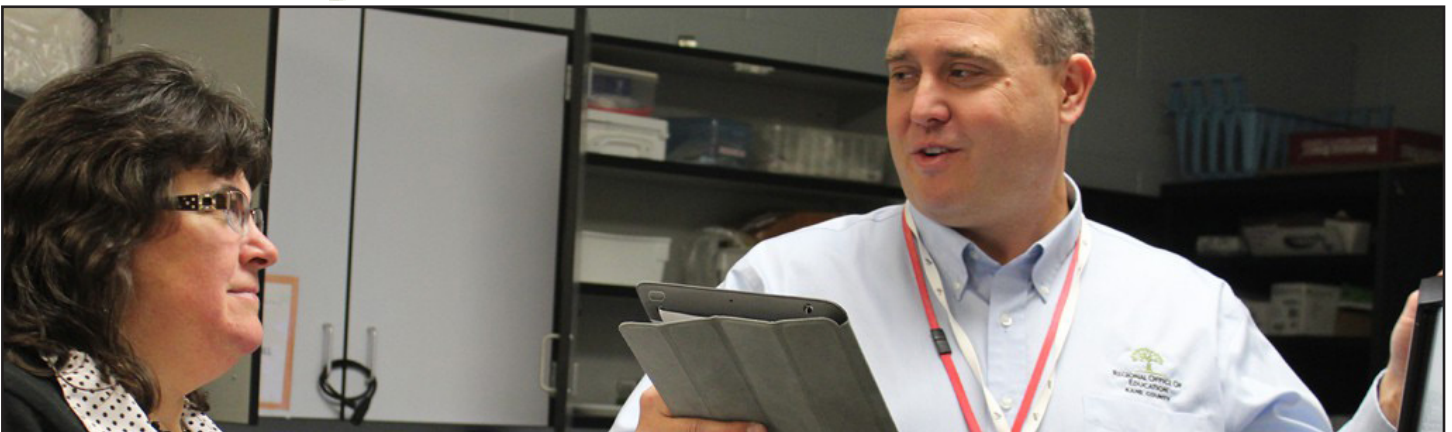
## HEALTH & LIFE SAFETY

All public school buildings and school-related buildings, including temporary/mobile classrooms, in the Kane County Regional Office of Education jurisdiction are inspected annually to assure compliance with the standards necessary to ensure the health and safety of public school students in Illinois, according to "Building Specifications for Health and Safety in Public Schools."

Annual inspection results from each building are available at the ROE. As required by law, a record of the annual inspection is sent to the president of the school board and a summary is filed annually with the State Board of Education. In addition, results from required State Fire Marshal inspections are reported through the ROE to the school districts and the state.

Every 10 years, each public building must be resurveyed for continued compliance by an architect or engineer licensed in the State of Illinois. The "Safety Survey Report" lists any items necessary to bring the building into full and continual compliance. Upon completion of outlined work, compliance is verified by the district and a licensed architect or engineer in a report filed with the ROE, and the building is awarded a certificate of compliance.

The ROE is also responsible, through the Regional Superintendent of Schools, for statutory compliance with established standards in the construction, remodeling and demolition of public school buildings. Furthermore, the Regional Superintendent assures code compliance for temporary/mobile classroom units throughout the region in cooperation with licensed architects or engineers retained by local school districts. Records of all amendments and construction information are kept on file at the ROE.





# SCHOOL SAFETY & SECURITY

Phil Morris, Director of Technology • pmorris@kaneroe.org

## SCHOOL/HEALTH WELLNESS NETWORK

Since early 2009, the school health/wellness network, with representation from the nine public school districts, the ROE and guests from the Kane County Health Department has met monthly during the school year to review health and wellness issues. Representatives share problems, possible solutions and resources, as well as successes. Initially the network focused on identifying and listing the many different programs in the districts that impact the health and wellness of students and staff.

## SCHOOL SAFETY/SECURITY TEAM

Beginning in September 2007, the school safety/security team, with representation from the nine public school districts and the ROE, has met monthly during the school year to review school safety - security issues, plans, procedures and practices. Representatives share successes, problems, possible solutions and resources. Outside resources, including IMSA, County Emergency & Management Association, the county Sheriff's Department, local police, local fire, the FBI, and security consulting firms have been utilized to foster knowledge and understanding of safety issues. The network focuses on making sure all students and staff members are prepared for emergency situations.



## FACILITY MANAGERS NETWORK

The Kane County Facility Managers Network was created in September 2008 to foster communication, cooperation and collaboration among the nine school districts and the Regional Office of Education. Attendees include school district facility managers, school district construction project managers, architects, consultants and ROE staff. Meetings assist participants to be prepared to assure that construction projects meet all relevant codes prior to application for occupancy. The ROE conducts annual HLS inspections with facility managers and principals to assure that the maintenance of all school buildings and facilities meets code and provides a safe and secure environment for children and staff.



# TECHNOLOGY

Phil Morris, Director of Technology • pmorris@kaneroe.org

## AREA ONE WEST LEARNING TECHNOLOGY CENTER

The Learning Technology Centers of Illinois assist the Illinois State Board of Education with statewide initiatives by supporting Illinois Regional Offices of Education and school districts with technical support and technology professional development. Learn more at [LTCillinois.org](http://LTCillinois.org)



## FINGERPRINTING

The Regional Office of Education provides fingerprinting services for all our public school districts. The Illinois School Code requires all new employees to have both a State and FBI criminal background check. Last year, approximately 4,000 people were fingerprinted. The electronic submission of fingerprints allows the ROE to typically receive results within 24 hours, so a school district can begin employment immediately.

## GEOGRAPHIC INFORMATION SYSTEM

The Kane County Regional Office of Education offers school districts the opportunity to request the assistance of its geographic information system (GIS). The GIS allows for the creation of custom maps and geographic analyses for school districts. GIS has proven to be a useful tool for Kane County school districts in the matter of attendance boundaries.



## LEARNING TECHNOLOGY SERVICES

During this past year the following services have been provided:

- Online registration for workshops with digital encryption
- Consultation for KCHRC online Application
- Maintenance of LiveScan fingerprint equipment for fingerprinting of new teachers and bus drivers in Kane County
- Hosting specialized training for school districts
- Continuing support for Follett Destiny
- Coordinating Palo Alto Firewall and Filter cooperative licensing
- Coordinating United Streaming video cooperative licensing
- Support HLS system for school inspections as well as further statewide development
- Developed online compliance system for all ROEs to use

## PEARSON VUE TESTING CENTER

The ROE is an official Pearson VUE Testing Center that is a temperature-controlled environment equipped with modern technology for maximum concentration during the testing process. The ROE offers a variety of tests include the GED, ATP, and TAP along with a variety of other professional certification tests. The ROE offers weekend and evening testing hours.





# TECHNOLOGY

Phil Morris, Director of Technology • pmorris@kaneroe.org

## PUBLIC OUTREACH AND DIGITAL COMMUNICATIONS

According to the ROE strategic plan, the communication goals for 2014-2015 included creating a new website, a process for disseminating information to network groups, strategies for increasing ROE visibility, and establishing a better brand identity. Starting July 24, a full-time communications coordinator was hired to manage these objectives.

- In the last fiscal year, the ROE, IARSS, and GFRVOS websites were migrated to WordPress and improved for mobile and tablet accessibility. All three sites are maintained daily.
- A semimonthly e-newsletter is regularly released on Wednesdays to a recipient list of over 2,500. This includes network participants, county board members, educators and members of the public.
- To improve ROE visibility, digital and event-related initiatives have been implemented. A public service announcement was produced on school bus safety and was aired on Elgin, Aurora and Batavia public access television. 38 education articles were published on Kane County Connects.
- A nine week student photography contest was organized with ten high schools participating. An end of the year photography reception was held at the ROE and over 100 students and parents attended.
- The 40th annual Educator of the Year ceremony was aired on public access television.
- With regular social media updates, the ROE has acquired 110 more likes on Facebook and 300 followers on Twitter. An ROE LinkedIn account was created and has 27 followers. A YouTube account was created and has 55 videos uploaded.



# FINANCE REPORTS

Meg Fetzer, Director of Finance • mfetzer@kaneroe.org

## CERTIFIED PERSONNEL

DISTRICT	TOTAL CERTIFIED (INCLUDE PART TIME)	DOCTORS & ED SPEC/ CAS DEGREE	MASTERS DEGREE	BACHELORS DEGREE	TEACHERS (INCLUDE PART TIME)	AVG. SAL FULL-TIME CERTIFIED TEACHERS	
U -46 ELGIN	2594	39	1963	592	390	\$61,165	\$99,381
101 BATAVIA	482	12	370	100	114	\$75,563	\$102,690
129 AURORA WEST	959	8	721	222	215	\$66,019	\$86,432
131 AURORA EAST	1040	19	623	398	189	\$50,417	\$89,400
300 DUNDEE	1466	53	992	421	371	\$50,282	\$102,183
301 CENTRAL	287	9	186	92	53	\$54,735	\$96,561
302 KANELAND	374	4	261	109	84	\$57,673	\$89,393
303 ST CHARLES	1086	39	857	190	195	\$71,034	\$115,195
304 GENEVA	478	17	361	100	145	\$68,533	\$109,555
TOTAL FY2015	8766	200	6334	2224	1756	\$61,713	\$98,977
		2.25%	73.14%	24.51%	20.09%		
TOTAL FY2014	8289	183	6221	1885	1790	\$62,375	\$100,772
		2.21%	75.05%	22.74%	21.59%		

Source: Meg Fetzer, CPA, mfetzer@kaneroe.org



# FINANCE REPORTS

Meg Fetzer, Director of Finance • mfetzer@kaneroe.org

## CERTIFIED PERSONNEL (CONT.)

DISTRICT	AVG. YRS. EXPERIENCE TEACHING IN ILLINOIS	ENROLLMENT PER CERTIFIED STAFF MEMBER  FY2015	ENROLLMENT PER CERTIFIED STAFF MEMBER  FY2014	TEACHER TO ADMIN STAFF RATIO	SUPPORT STAFF	ENROLLMENT TO SUPPORT STAFF RATIO	ENROLLMENT PER FALL HOUSING RPT  FY2014
U -46 ELGIN	13.0	15.5	17.0	15.4	2,378	16.9	40,221
101 BATAVIA	13.0	12.6	13.4	16.3	168	36.2	6,083
129 AURORA WEST	11.5	13.1	14.0	9.4	438	28.7	12,560
131 AURORA EAST	7.6	14.0	15.3	11	137	106.0	14,522
300 DUNDEE	10.5	14.1	14.4	12.6	427	48.5	20,721
301 CENTRAL	12.2	13.0	14.2	15.9	232	16.1	3,738
302 KANELAND	9.3	12.3	12.8	14.0	219	21.0	4,600
303 ST CHARLES	12.8	12.0	12.3	18.7	435	30.0	13,046
304 GENEVA	11.0	12.2	12.7	15.5	231	25.3	5,841
AVERAGE	11.2	13.2	14.0	14.3	4,665	36.5	121,332
PRIOR YEAR	11.3	14.0	14.0	16.6	3,857	49.3	121,785

Source: Meg Fetzer, CPA, mfetzer@kaneroe.org



# FINANCE REPORTS

Meg Fetzer, Director of Finance • mfetzer@kaneroe.org

## CLASSROOM BUILDINGS IN USE JULY 1, 2014 - JUNE 30, 2015

DISTRICT	ELEMENTARY SCHOOL		MIDDLE OR JR HIGH SCHOOL		SENIOR HIGH SCHOOL		MOBILE CLASSROOMS		OTHER SPECIAL ED, VOC. ED ETC.	
	FY 15	FY 14	FY 15	FY 14	FY 15	FY 14	FY 15	FY 14	FY 15	FY 14
<b>U-46 ELGIN</b>	40	40	8	8	5	5	21	29	5	5
<b>101 BATAVIA</b>	6	6	1	1	1	1	0	0	1	0
<b>129 AURORA WEST</b>	12	10	4	4	1	1	14	5	1	3
<b>131 AURORA EAST</b>	13	12	3	4	1	1	0	0	4	2
<b>300 DUNDEE</b>	17	15	5	5	3	3	0	0	2	4
<b>301 CENTRAL</b>	4	4	2	2	1	1	0	0	0	0
<b>302 KANELAND</b>	4	4	1	1	1	1	0	0	1	1
<b>303 ST CHARLES</b>	12	12	3	3	2	2	7	6	0	0
<b>304 GENEVA</b>	6	6	2	2	1	1	0	0	1	1
<b>TOTAL</b>	114	109	29	30	16	16	42	40	15	16

Source: FRIS Reports



# FINANCE REPORTS

Meg Fetzer, Director of Finance • mfetzer@kaneroe.org

## PUBLIC SCHOOL ENROLLMENT - SEPTEMBER 2014

### FY15 Enrollment

School	FY14	FY15	Pre-K	K-5	6-8	9-12
U46 Elgin	40,375	40,221	1,279	18,147	8,781	12,014
101 Batavia	6,129	6,083	95	2,569	1,429	1,990
129 West Aurora	12,804	12,560	361	5,573	2,879	3,747
131 East Aurora	14,444	14,522	685	6,930	3,149	3,758
300 Dundee	20,757	20,721	718	9,242	4,691	6,070
301 Central	3,561	3,738	67	1,783	825	1,063
302 Kaneland	4,603	4,600	47	2,135	1,089	1,329
303 St. Charles	13,271	13,046	257	4,983	3,293	4,513
304 Geneva	5,841	5,841	88	2,370	1,422	1,961
<b>TOTAL FY15</b>		121,332	3,597	53,732	27,558	36,445
<b>TOTAL FY14</b>	121,785		3,401	54,710	27,656	35,989

Source from Fall Enrollment Counts  
[http://www.isbe.net/research/htmls/fall\\_housing.htm](http://www.isbe.net/research/htmls/fall_housing.htm)

# FINANCE REPORTS

Meg Fetzer, Director of Finance • mfetzer@kaneroe.org

## ISBE FEDERAL & STATE REVENUE - FISCAL YEAR ENDING JUNE 30, 2015

	\$ STATE AID *	\$ STATE - OTHER	\$ FEDERAL	\$ TOTAL	\$ PER ADA	\$ ADA
U-46 ELGIN	97,728,628	39,565,803	27,685,750	164,980,181	4,681	35,246
101 BATAVIA	3,004,703	5,150,460	1,128,404	9,283,566	1,605	5,784
129 AURORA WEST	33,544,089	12,748,361	9,892,031	56,184,480	4,834	11,623
131 AURORA EAST	53,542,140	14,793,899	15,593,352	83,929,391	6,628	12,663
300 DUNDEE	25,587,022	17,741,982	11,518,530	54,847,534	2,941	18,652
301 CENTRAL	2,460,281	3,215,577	439,737	6,115,595	1,739	3,517
302 KANELAND	3,890,211	4,983,058	556,487	9,429,755	2,216	4,256
303 ST CHARLES	5,038,196	9,704,345	1,866,397	16,608,938	1,380	12,035
304 GENEVA	2,065,167	2,950,565	291,157	5,306,889	934	5,682
						109,457
TOTAL FY2015	226,860,436	110,854,049	68,971,844	406,686,329	3,715	
TOTAL FY2014	236,519,058	105,413,335	68,756,449	410,688,842	3,749	
CHANGE	-4.3%	4.9%	0.3%	-1.0%	-0.9%	

\* Source: Additional Financial and District information may be obtained at [www.isbe.net](http://www.isbe.net)