



REGIONAL OFFICE OF EDUCATION
KANE COUNTY

ANNUAL REPORT 2017-2018



Regional Superintendent Patricia Dal Santo
Assistant Regional Superintendent Deanna Oliver



REGIONAL OFFICE OF EDUCATION
KANE COUNTY

CONTENTS

Intro from Superintendent.....	Pg. 3
Our Mission.....	Pg. 4
Our Districts.....	Pg. 5
School District Boundary Map.....	Pg. 6
Organizational Chart.....	Pg. 7
Alternative Programs.....	Pg. 8-10
Homeless Education.....	Pg. 11
Business Office.....	Pg. 12-13
Partnerships.....	Pg. 14-15
Professional Development.....	Pg. 16-17
Educator of the Year.....	Pg. 18
Licensure.....	Pg. 19
Transportation.....	Pg. 20
School Safety & Security.....	Pg. 20-21
Technology.....	Pg. 22-23
Finance Reports.....	Pg. 24-28



**KANE COUNTY
REGIONAL OFFICE OF EDUCATION
FISCAL YEAR 2018 ANNUAL REPORT**

As Superintendent of the Kane County Regional Office of Education, Kane County, Illinois, I hereby submit the annual report of the activities of this office from July 1, 2017 through June 30, 2018.

This report is an overview and is not inclusive of all the services and collaborative partnerships the Regional Office of Education provides as an educational leader for the benefit of the schools and citizens of Kane County.

This report uses information from end-of-year reports of our programs and services and from end-of-year school reports from the Illinois State Board of Education website to make this Annual Report as comprehensive as possible.

We hope it will help you better understand the work our office and the educators of Kane County provide to ensure our schools are safe and nurturing places of learning where all people, young and old alike, are valued and respected.

Sincerely,

A handwritten signature in black ink that reads "Patricia Dal Santo". The signature is fluid and cursive.

Patricia Dal Santo
Regional Superintendent of Schools
Kane County Regional Office of Education



THE MISSION

The mission of the Kane County Regional Office of Education is to advocate for education, provide leadership, perform regulatory functions, and coordinate state and local services for educators, school districts, and the community.



LEAD



ASSIST



INSPIRE

OUR KANE COUNTY SCHOOL DISTRICTS



School District U-46
Dr. Kenneth Arndt, Interim Supt.
Mr. Tony Sanders, CEO
355 E. Chicago Street,
Elgin, IL 60120
Phone: 847-888-5000
www.u-46.org



School District 301
Dr. Todd Stirn, Superintendent
Box 396
275 South Street
Burlington, IL 60109
Phone: 847-464-6005
www.central301.net



School District 101
Dr. Lisa Hichens, Superintendent
335 W. Wilson Street
Batavia, IL 60510
Phone: 630-937-8800
www.bps101.net



School District 302
Dr. Todd Leden, Superintendent
47W326 Keslinger Road
Maple Park, IL 60151
Phone: 630-365-5111
www.kaneland.org



School District 129
Dr. Jeff Craig, Superintendent
Box 4430
80 S. River Street
Aurora, IL 60506
Phone: 630-301-5000
www.sd129.org



School District 303
Dr. Jason Pearson, Superintendent
201 S. 7th Street
St. Charles, IL 60174
Phone: 331-228-2000
www.d303.org



School District 131
Dr. Mark McDonald, Interim Supt.
417 Fifth Street
Aurora, IL 60505
Phone: 630-299-5550
www.d131.org



School District 304
Dr. Kent Mutchler, Superintendent
227 North Fourth Street
Geneva, IL 60134
Phone: 630-463-3000
www.geneva304.org

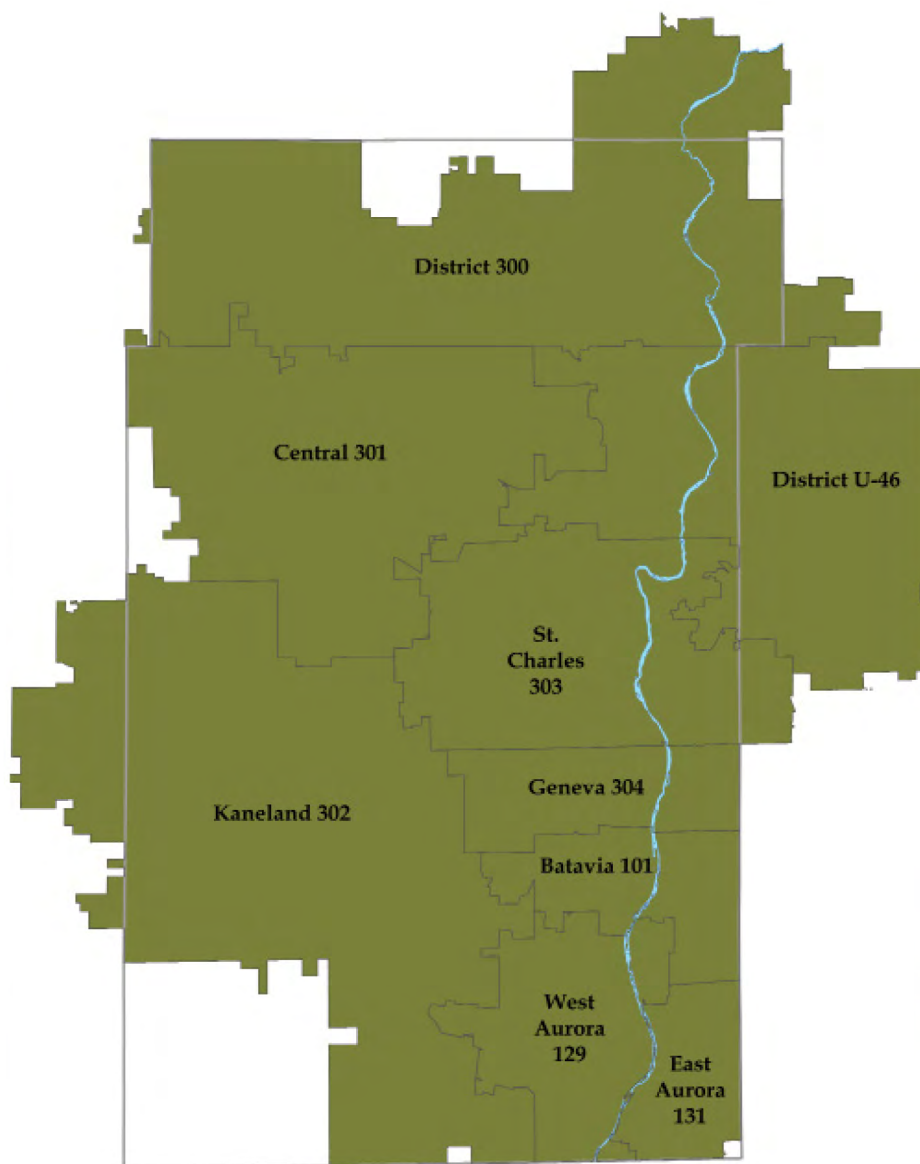


School District 300
Mr. Fred Heid, Superintendent
2550 Harnish Drive
Algonquin IL 60102
Phone: 847-551-8300
www.d300.org

**Access the public school
directory on the ROE
website here:**
<http://goo.gl/ahciXL>

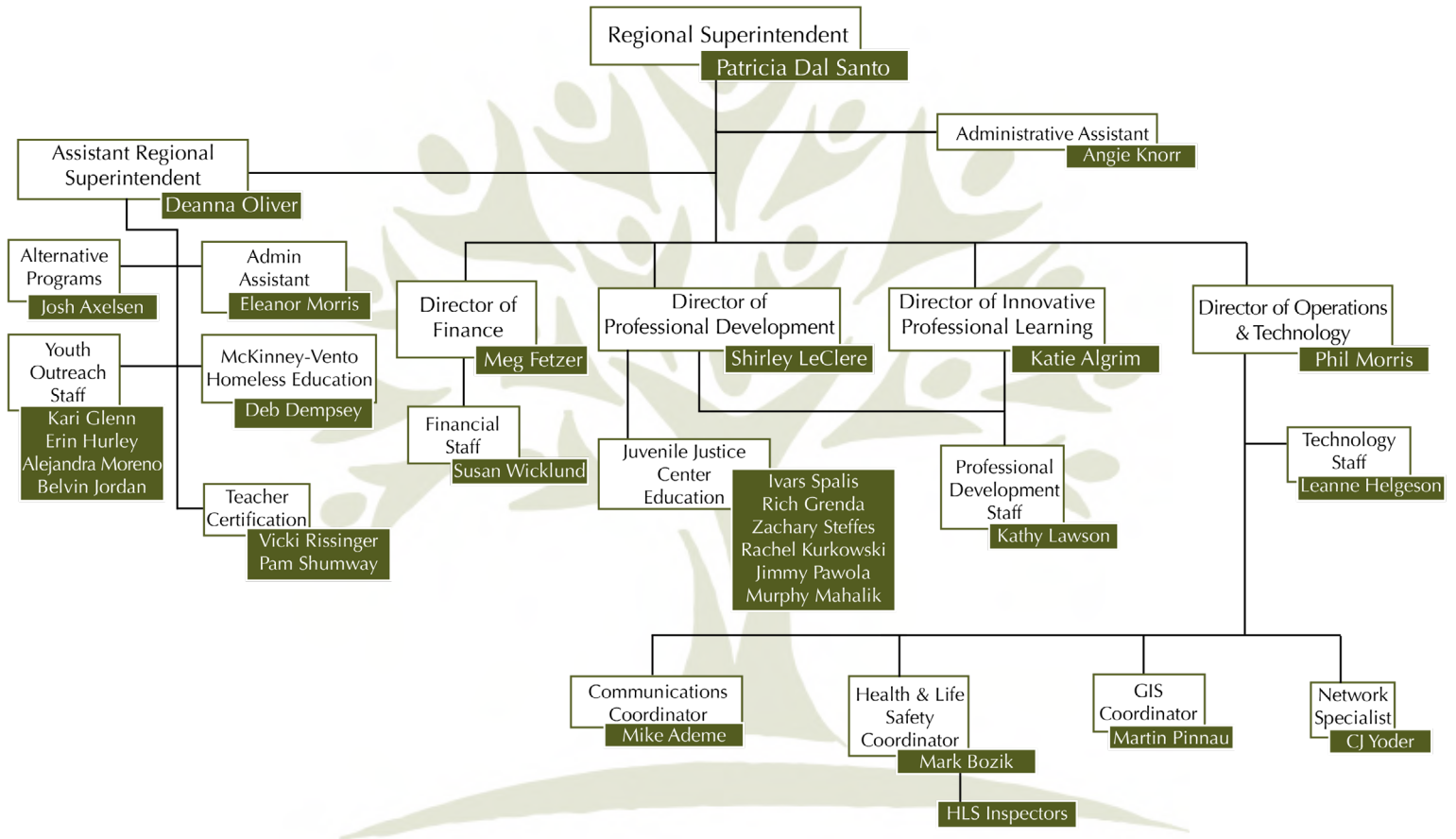


SCHOOL DISTRICT BOUNDARY MAP



The Regional Office of Education services nine school districts in Kane County. It includes District 300, Central 301, District U-46, St. Charles 303, Kaneland 302, Geneva 304, Batavia 101, West Aurora 129, and East Aurora 131.

REGIONAL OFFICE OF EDUCATION ORGANIZATIONAL CHART 2017-2018



Access the staff
directory here:
<https://goo.gl/4KqvBN>



ALTERNATIVE PROGRAMS

Deanna Oliver, Assistant Superintendent • doliver@kaneroe.org

Our alternative programs assist with at-risk youth and their families facing atypical circumstances within the school system, whether it be homelessness, truancy, expulsion, or delinquency. As stated by the Illinois State Board of Education, regional offices of education are also responsible for investigating noncompliance within private and homeschool arrangements.

TRUANCY PREVENTION/INTERVENTION PROGRAM

In 2017-2018 the Regional Office of Education completed the 33rd year of the Kane County Truancy Prevention Program. Youth Outreach Workers (truant officers) collaborate with schools to advocate for students and parents to ensure consistent school attendance. Kane County had 1,545 official referrals from our local schools requesting truancy assistance from our staff. The services provided during the 2017-2018 year were the following:

Services	2017-2018
School Visits	1,682
Home Visits	345
Student Contacts	2,932
Community Agency Contacts	82
School Conferences	176
Regional Conferences	33
Juvenile Court Cases	7
Adult Court Cases	3



Source of Referrals by District	2017-2018
U-46 Elgin	562
101 Batavia	19
129 West Aurora	140
131 East Aurora	316
300 Dundee/Carpentersville	406
301 Central	30
302 Kaneland	17
303 St. Charles	42
304 Geneva	13
Total	1,545
By Grade Level	
Elementary K-5	506
Middle School	285
High School	754
Other	0
By Gender	
Males	831
Females	714

DROPOUT INTERVENTION PROGRAM

The Kane County Dropout Intervention Program completed its 30th year in the 2017-2018 school year. This program reaches out to those individuals who have dropped out of school for a variety of reasons. Information is provided to them regarding continuing their education in some manner through returning to school, obtaining a GED or vocational programming.

ALTERNATIVE PROGRAMS

Deanna Oliver, Assistant Superintendent • doliver@kaneroe.org

REGIONAL SAFE SCHOOLS PROGRAM (RSSP)

This is a cooperative effort between the Regional Office of Education and the local school districts. The programs within school districts are designed to meet local needs. The purpose of the RSSP is twofold: 1) to increase safety and promote the learning environment in schools and 2) to meet the particular educational needs of disruptive students more appropriately and individually in an alternative educational environment. In 2017-2018, 344 students were served through this program. Without this program, those students would not have received an education and most likely would have become dropouts.



ALTERNATIVE LEARNING OPPORTUNITIES PROGRAMS (ALOP)

The Alternative Learning Opportunities Program serves students that may need educational supports and other support services that are not currently provided by their regular school programs. In order to address these needs, school districts develop and implement Alternative Learning Opportunities Programs (ALOPs) that offer a broader range of academic, behavioral, and social/emotional interventions designed to increase the academic achievement levels of these students so that they are able to meet the Illinois Learning Standards and complete their education in a safe learning environment. The Kane County Regional Office of Education partnered with 4 school districts and 1 special education cooperative to support students within an ALOP. 934 students in grades 4-12 received supports in an ALOP environment during the 2017-2018 school year.





ALTERNATIVE PROGRAMS

Deanna Oliver, Assistant Superintendent • doliver@kaneroe.org

JUVENILE JUSTICE CENTER EDUCATION PROGRAM

To guarantee students in juvenile detention continue to be educated and make a successful transition back into their public school program, the Kane County Regional Office of Education administers the Kane County Juvenile Justice Center Education Program. The Regional Office of Education has an inter government agreement between School District #303, St. Charles, and the Chief Judge of the 16th Circuit Court to operate the educational program at the Juvenile Justice Center. The over-arching goal is to broaden the mindset of the students at the center. Students access online courses, GED preparation, dual credit courses, and explore college and careers.

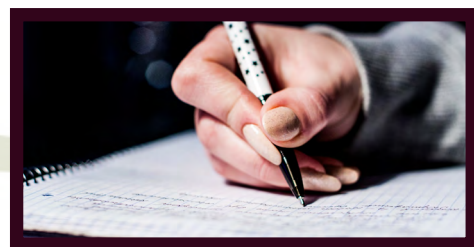


HOMESCHOOLING

The Regional Office of Education serves as a resource to those parents who are interested in home schooling their children. Information is shared with the parents to assist them. A request is made for parents to register with the Regional Office as a home schooling parent and assure that education is being provided to their children. There are no fees collected for resource information.

HIGH SCHOOL EQUIVALENCY EXAM (HSE)

High School Equivalency Exam (HSE) Tests are completed at the ROE's Pearson VUE Testing Center. The test center offers computer-based tests to those who are 17 years of age or older in English or Spanish.



The HSE test takes about 7.25 hours and contains four sections:

- Reasoning Through Language Arts (including a 10 minute break): 150 mins
- Mathematical Reasoning: 90 mins
- Science: 90 mins
- Social Studies: 90 mins

A passing score of 150 is required for each subject. A total score of 600 or higher is required to receive the HSA certificate. The final component of the HSE test is the passing of the US Constitution test. This test is offered for free at the ROE and is completed on a computer. In addition to the HSE test, the ROE's Pearson VUE Test Center also provides HSE transcripts and HSE certificates upon written or faxed request. For more information on this service, please visit: <http://www.kaneroe.org/gedhse/>

HOMELESS EDUCATION

Deanna Oliver, Assistant Superintendent • doliver@kaneroe.org

Homeless children and youth face numerous obstacles in obtaining an education. The goal of the Kane County Homeless Education Program is to assist the school districts to ensure equal educational access for all homeless children and youth, including preschoolers, so that each student will have the opportunity to succeed in school programs and meet the same challenging state standards to which all students are held.

EQUAL CHANCE PROGRAM

The federal McKinney-Vento Act requires school districts to be proactive in finding homeless children who are not attending school and identifying which children and youth are homeless. This program is administered by the ROE's Homeless Liaison and funded by a sub grant from the Area One Lead Program and Illinois State Board of Education through the McKinney-Vento Homeless Assistance Act.

For the 2017-2018 school year the ROE Equal Chance Program provided:

- Technical assistance to all 9 Kane County School District Liaisons
- 9 trainings to all school staffs including 4 social service agencies
- 7 Administrators' Academies
- Created unaccompanied McKinney/Vento panel and presented at National Conference
- Facilitated 47 parent meetings
- Met with 50 students several times throughout the year to offer supportive services
- Assisted 5 students to complete FAFSA
- Weekly meetings/workshops with Community Crisis Center Clients
- Collaborated with ECC, U-46, D300, Community Crisis Center for the 8th Annual Project Backpack Back To School Fair in distributing 1,030 backpacks filled with school supplies
- Distributed Christmas Gifts donate by churches, Renaissance Foundation and Kane ROE to 252 children
- Distributed 30 Thanksgiving and Easter food baskets to Kane County families
- Facilitated tutoring for 6 homeless students in Kane County
- Assisted unaccompanied homeless youth to obtain health benefits, physicals and other benefits they may be entitled to
- Partnered with U-46, D300, and Elgin YWCA for 6th annual Cinderella's Closet to provide prom dresses for Kane County students in need
- Participated in Kane County Foster Care Network meetings

Affiliations 2017-2018 School Year

- Attends and is on the Board, Steering Committee and Ranking Committee of the Kane County Continuum of Care
- Area Planning Meeting Committee member
- Participates in U-46 alignment process for Trauma Informed care
- Belong to the EPEL group and on the communications taskforce
- Collaborate and participate in planning for on the Aurora SPARK
- United Way of Elgin grant ranking committee
- FSA Wrap Around WRAT Team
- Member of Kane County Family Violence Committee
- Attends AOK Early Childhood Network meetings



BUSINESS OFFICE

Meg Fetzer, Director of Finance • mfetzer@kaneroe.org

A portion of the funds for the operating budget of the Kane County Regional Office of Education is provided by the Kane County Government. The salaries for the Regional Superintendent and the Assistant Regional Superintendent are paid by the State of Illinois. The majority of funding for the operating budget for the office comes from competitive private, state, and federal grants. The following budget figures are based on the county's fiscal year, which runs from December 1st through November 30th.

KANE COUNTY BUDGET FY 2017-2018

Line Item	Budgeted Amount FY17	Budgeted Amount FY18	Percent of Change
Personnel Services			
Full Time Salaries	\$258,176.00	\$258,176.00	0.00%
Benefits	\$33,420.00	\$35,099.00	5.02%
Consulting	\$4,575.00	\$4,575.00	0.00%
Software - licensing	\$13,000.00	\$0.00	-100.00%
Totals	\$309,171.00	\$297,850.00	-3.66%

BUSINESS OFFICE

Meg Fetzer, Director of Finance • mfetzer@kaneroe.org

INSTITUTE FUND FINANCIAL REPORT

All certificate registration fees and a portion of renewal and duplicate fees are to be kept by the Regional Superintendent and deposited into the Institute Fund. The expenditure of these funds is very restricted and is used to defray expenses incidental to teachers' institutes, workshops, or meetings of a professional nature that are designed to promote the professional growth of teachers, which has been approved by the Regional Superintendent.

Institute Fund Financial Report July 1, 2017 - June 30, 2018 Unaudited

Beginning Fund Balance, July 1, 2017		1,167,137.98
Receipts		
Certificate Registration	312,755.00	
Interest	14,910.69	
Educator of the Year	22,210.00	
Transfers In	2,505.54	
Total Receipts	352,381.23	
Disbursements		
Other Purchased Services	115,919.45	
Operating Expense	17,357.70	
Professional & Technical Services	151.86	
Total Disbursements	133,429.01	218,952.22
Ending Fund Balance, June 30, 2018		1,386,090.20



PARTNERSHIPS

The Regional Office of Education is active in establishing partnerships with schools, networks with districts, and investments in local & statewide nonprofit organizations.

NETWORKS

Networks provide mutual assistance and support which facilitates sharing of information and services among individuals and groups. Constant feedback and strong participation indicate that networks are serving the nine Kane County school districts and their staff. The networks share best practices, common problems, and collaborate on professional development. Collaborative professional development opportunities are regularly developed, like the annual countywide institute day. The networks are prominently mentioned as a benefit for new members as they gain expertise from experienced colleagues throughout the region. Regional Office of Education leadership also participates in area and statewide networks like regional superintendents, administrators' academy coordinators, professional development directors, safe school directors and technology directors.

The ROE has established the following networks with the nine K-12 school districts:

- School District Superintendents
- High School Principals
- Kane County Learning Leaders (directors of curriculum and instruction)
- Kane County Human Resources Consortium (human resources directors)
- Northern Illinois Association w/ Special Education Directors
- Facilities Managers
- Kane County Instructional Technologists
- Kane County Literacy Leaders
- School Safety/Security Team
- School Health/Wellness Team
- Special Education Directors
- Technology Directors
- Transportation Directors
- Transportation Routers
- Chief School Business Officials
- School District Public Relations Officials
- School Guidance Counselors
- Foster Care Network

KANE COUNTY HUMAN RESOURCE CONSORTIUM (KCHRC)

The Kane County Human Resource Consortium (KCHRC), formed in 2002, is a cooperative effort among the nine public K-12 school districts and the Regional Office of Education in Kane County, Illinois. The KCHRC is dedicated to the recruitment, selection, and professional growth of quality educators. The consortium has created a single online application process allowing applicants to submit a teaching application to all nine districts simultaneously. Kane County school administrators are trained to utilize the system in the hiring of all certified teachers. District human resources directors meet twice a month with the ROE for planning and professional development.

More information can be found at www.teachinkane.org.

PARTNERSHIPS

OPERATION SNOWBALL

Greater Fox River Valley Operation Snowball (GFRVOS) is a community-based alcohol, tobacco, and drug use prevention program focusing on leadership development to empower youth to lead drug-free lives. Operation Snowball seeks to bring together high school youth and caring adults to develop trusting relationships. It is founded on the belief that youth and adults can make responsible decisions when provided with factual information and an opportunity to develop an understanding of one's self and others.

Currently there are 12 participating high schools within Kane County. The group meets at the ROE weekly during the evening. Twice during the year they hold a weekend event which draws approximately 150 student attendees.



SPELLING BEE

In cooperation with the Scripps National Spelling Bee, the Kane County ROE hosts two area semi-final spelling bees, and a Regional Spelling Bee Final. The ROE is proud to coordinate the spelling bee for our Kane County public and non-public schools.

At the beginning of each school year, all schools that register with Scripps to participate have individual school spelling bees.

The winners' names are reported to the Kane County Regional Office of Education. The regional Spelling Bee semi-finals are scheduled to take place in February. The top four winners from the semi-final bees participate in the final competition in March before one winner from Kane County proceeds to the Scripps

National Spelling Bee in Washington D.C. in May. The local and regional spelling bees are coordinated and funded by the Regional Office of Education.





PROFESSIONAL DEVELOPMENT

Katie Algrim, Director of Innovative Professional Learning • kalgrim@kaneroe.org

The Regional Office of Education facilitates and works collaboratively with teachers and leaders to guide their continuous instructional improvements through professional development opportunities. We support a wide variety of activities including institutes, workshops, conferences, networking, technical assistance, information dissemination, and consulting to meet the needs of our schools.

INSTITUTE DAY 2018

This conference style professional learning experience allows The Kane County Regional Office of Education to provide over 250 different breakout sessions to over 4,000 teachers, paraprofessionals, health professionals and other support staff who are able to select workshops of interest to attend. Participants have access to the latest research-based practices and acquire new ideas and knowledge to help facilitate their work in teaching and learning.

BREAKOUT SESSION TOPICS INCLUDED, BUT NOT LIMITED TO:

- Assessment
- English Language Learner
- Engagement
- Language Arts
- Foreign Languages
- Math
- Next Generation Science Standards
- Professional Learning Communities
- Social Emotional Learning
- Special Education
- Technology
- ACES
- Early Childhood
- Personalized Learning
- Social Studies
- STEM
- Career and Technical Education
- Fine Arts
- Diversity
- Poverty
- Music
- Physical Science



Visit our website here to learn more about Institute Day:

<https://kaneroe.org/institute-day/>



PROFESSIONAL DEVELOPMENT

Katie Algrim, Director of Innovative Professional Learning • kalgrim@kaneroe.org

OTHER PROFESSIONAL DEVELOPMENT OFFERINGS



Illinois Online Academy

ILLINOIS ONLINE ACADEMY

The Kane County Regional Office of Education provides online professional development courses for teachers. These classes are intentionally structured so the skills and knowledge the teachers learn can immediately be applied to the classrooms. Online classes are offered for graduate credits or professional development clock hours. For more information, contact Katie Algrim at kalgrim@kaneroe.org.

ILLINOIS ADMINISTRATORS' ACADEMY

The purpose of the academy is to maintain a statewide, regionally-based network that provides opportunities for mandated professional development for school administrators. The academy provides high-quality training on the evaluation of certified personnel, school improvement, school accountability, public relations, communications, and pertinent leadership education relating to student growth, student achievement and school operations. By statute, every administrator must complete a minimum of one approved academy annually and a minimum of five in each administrator certificate renewal period.

Section 24A-3 of the School Code requires that an individual who conducts evaluations of teachers, principals, or assistant principals after September 1, 2012, must be prequalified before undertaking any evaluations and must participate in a regularly scheduled retraining program, either of which must be developed or approved by the State Board of Education. The Kane County Regional Office of Education offers the "Recalibration Academies" annually to meet legislative requirements

**Register for upcoming
workshops and events:**
<https://register.kaneroe.org>





EDUCATOR OF THE YEAR

Patricia Dal Santo, Regional Superintendent of Schools • pdalsanto@kaneroe.org

EDUCATOR OF THE YEAR

The 43rd Annual Educator of the Year Awards Banquet was held at the Q Center in St. Charles on May 4, 2018. This awards banquet provides an opportunity to honor outstanding members of the education profession in Kane County and promote awareness of the quality education being provided in our schools. Special recognition is also given to those retiring from education.

Local nominating committees consisting of teachers and administrators nominate educators throughout the county. Those nominated are seen as having the respect and admiration of students, parents, and co-workers. They play active and useful roles in their communities and schools, often distinguishing themselves as leaders.

Those honored represent the dedicated service found in all of the staff throughout Kane County. This program has received enthusiastic support from regional educators, and several Kane County award recipients have been selected by the Illinois State Board of Education as outstanding teachers in Illinois.

The dinner honored 41 distinguished educators with plaques of recognition. Those who received awards of distinction were:

Educator of the Year

Kyle Libberton, District 303

Elementary Educator of the Year

Mary Fulin, District U-46

Middle School Educator of the Year

Beth Harner, District 300

High School Educator of the Year

Susan Zagorski, District 301

Regional Superintendent Award

Lisa Dandre, District 303

Administrator of the Year

Fred Heid, District 300

Early Career Educator Award

Saul Olivas, District 131

Pre-School Teacher of the Year

Karen Nellis, District 101

Private/Parochial Teacher Award

Peggy Veltri, Elgin Academy

Student Support Personnel Award

Denise Michels, District 302

Educational Service Personnel Award

Brittany Bailey-Cole, District 304



EDUCATOR LICENSURE

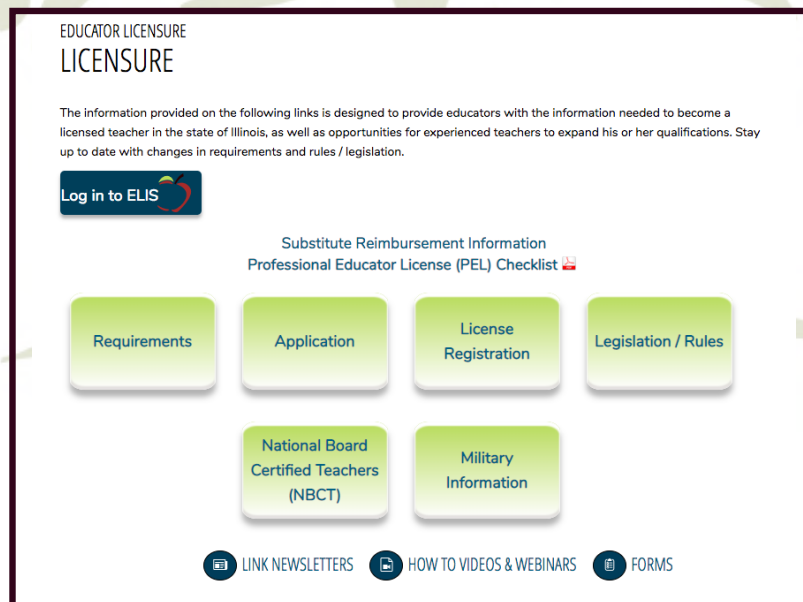
Deanna Oliver, Assistant Superintendent • doliver@kaneroe.org

The Kane County Regional Office of Education Licensure Department serves teachers and administrators with all aspects of their credential needs. The office provides instructions on how to access the Educator Licensure Information System (ELIS).

The office gives information on how to apply for licenses, endorsements, approvals; how to register and renew licenses; and how to enter professional development credit hours using ELIS. The Licensure Department also answers many questions via email and phone.

The Kane County ROE tested 103 paraprofessionals so they can obtain their NCLB Paraprofessional Approval.

The Kane County ROE hosts and maintains the Kane County Human Resource Consortium online teacher application and vacancy system for all Kane County public school districts. There were more than 9,000 active applications in the KCHRC system in 2017-2018.



**Watch more videos on the
ROE YouTube channel
<https://goo.gl/sJDBWa>**



TRANSPORTATION

Deanna Oliver, Assistant Superintendent • doliver@kaneroe.org

The Regional Office of Education is responsible for conducting the initial training that is required for all new school bus drivers prior to getting a bus permit, and the annual refresher workshop that is required in the 12-month period prior to renewing a school bus permit.

Experienced drivers must take a two-hour refresher course annually, and all new drivers must take an eight-hour course in school bus driver safety and first aid, as prescribed by the Illinois State Board of Education and administered by the Kane County ROE.

The Kane County ROE provided 11 Initial Bus Driver Training courses and 40 Refresher Trainings for 1,770 participants.

SCHOOL SAFETY & SECURITY

Phil Morris, Director of Operations & Technology • pmorris@kaneroe.org

HEALTH & LIFE SAFETY

All public school buildings and school-related buildings, including temporary/mobile classrooms, in the Kane County Regional Office of Education jurisdiction are inspected annually to assure compliance with the standards necessary to ensure the health and safety of public school students in Illinois, according to "Building Specifications for Health and Safety in Public Schools." Annual inspection results from each building are available at the ROE. As required by law, a record of the annual inspection is sent to the president of the school board and a summary is filed annually with the State Board of Education. In addition, results from required State Fire Marshall inspections are reported through the ROE to the school districts and the state.

Every 10 years, each public building must be resurveyed for continued compliance by an architect or engineer licensed in the State of Illinois. The "Safety Survey Report" lists any items necessary to bring the building into full and continual compliance. Upon completion of outlined work, compliance is verified by the district and a licensed architect or engineer in a report filed with the ROE, and the building is awarded a certificate of compliance.

The ROE is also responsible, through the Regional Superintendent of Schools, for statutory compliance with established standards in the construction, remodeling and demolition of public school buildings. The Regional Superintendent assures school board approval of construction plans, review of construction plans for code compliance, issuance of the building permit, and upon review, issuance of school occupancy permits. Furthermore, the Regional Superintendent assures code compliance for temporary/mobile classroom units throughout the region in cooperation with licensed architects or engineers retained by local school districts. Records of all amendments and construction information are kept on file at the ROE.

SCHOOL SAFETY & SECURITY

Phil Morris, Director of Operations & Technology • pmorris@kaneroe.org

SCHOOL/HEALTH WELLNESS NETWORK

Since early 2009, the school health/wellness team network, with representation from the nine public school districts, the ROE and guests from the Kane County Health Department has met monthly during the school year to review health and wellness issues. Representatives share problems, possible solutions and resources, as well as successes. Initially the network focused on identifying and listing the many different programs in the districts that impact the health and wellness of students and staff. The existence of the health/wellness team network was very helpful when concern about the H1N1 Virus, commonly known as the “Swine Flu” emerged. The network also spent time discussing and brainstorming about involvement in the Kane County “Fit Kids 2020” program.

SCHOOL SAFETY/SECURITY TEAM

The school safety/security team network, with representation from the nine public school districts and the ROE have met monthly during the school year to review school safety and security issues, plans, procedures and practices. Representatives share successes, problems, possible solutions and resources. Outside resources, including IMSA, County Emergency & Management Association County Sheriff's Department, local police, local fire, the FBI, and security consulting firms have been utilized to foster knowledge and understanding of safety issues. The network focuses on making sure all students and staff members are prepared for emergency situations. The safety/security network stresses that law enforcement first responders and the administration of all schools must collaborate to prepare and practice for emergency situations. Training has been provided to address awareness and prevention practices of school safety issues.



FACILITY MANAGERS NETWORK

The Kane County Facility Managers Network fosters communication, cooperation and collaboration among the nine school districts and the Regional Office of Education. Attendees include school district facility managers, school district construction projects managers, architects, consultants and ROE staff.

Meetings assist participants to be prepared to assure that construction projects meet all relevant codes prior to application for occupancy. The ROE conducts annual HLS inspections with facility managers and principals to assure that the maintenance of all school buildings and facilities meets code and provides a safe and secure surrounding for children and staff. All have an opportunity to learn what others are doing and participants may share procedures, resources, and successes in their districts.



TECHNOLOGY

Phil Morris, Director of Operations & Technology • pmorris@kaneroe.org

FINGERPRINTING

The Regional Office of Education provides fingerprinting services for all our public school districts. The Illinois School Code requires all new employees to have both a State and FBI criminal background check. Last year, approximately 3,894 people were fingerprinted. The electronic submission of fingerprints allows the ROE to typically receive results within 24 hours, so a school district can begin employment immediately.

The ROE also partners with Kane County government to fingerprint their new employees throughout the year.



GEOGRAPHIC INFORMATION SYSTEM

The Kane County Regional Office of Education offers school districts the opportunity to request the assistance of its geographic information system (GIS). The GIS allows for the creation of custom maps and geographic analyses for school districts. GIS has proven to be a useful tool for Kane County school districts in the matter of attendance boundaries. GIS allows school districts to create and take advantage of updatable maps to address geographic concerns. Some transportation concerns such as bus routes, bus stops, and hazardous roads can be represented in the GIS.



PEARSON VUE TESTING CENTER

The ROE is an official Pearson VUE Testing Center that is a temperature-controlled environment equipped with modern technology for maximum concentration during the testing process. The ROE offers a variety of tests including the HSE, ATP, and TAP along with a variety of other professional certification tests.



TECHNOLOGY

Phil Morris, Director of Operations & Technology • pmorris@kaneroe.org

LEARNING TECHNOLOGY SERVICES

In addition to being the Area One West Learning Technology Center, the Regional Office of Education integrates support and training in many areas of technology. A needs assessment is given during the year at monthly technology coordinator meetings. Monthly technology coordinator meetings are used to communicate information from the Illinois State Board of Education, and also allow dialogue between districts.

Learning Technology Services also provides technical support within the Regional Office of Education to maintain connectivity to the Illinois State Board of Education electronic systems including Teacher Certification, Administrators' Academy, and GED. Learning Technology Services supports the technology implementation at the Kane County Juvenile Justice Center (JJC).



During this past year the following services have been provided:

- Online registration for workshops with digital encryption
- Consultation for KCHRC On-Line Application
- Maintenance of LiveScan fingerprint equipment for fingerprinting of new teachers and bus drivers in Kane County
- Hosting specialized training for school districts
- Continuing support for Follett Destiny
- Maintaining the Kane County ROE website, Facebook fan page, and Twitter pages.
- Support HLS system for school inspections as well as further statewide development
- Provide support for IARSS (Website, Listservs, technical questions)
- Supported online compliance system for all ROE's to use
- Facilitate meetings of Technology Directors, Instructional Technology, and System Administrators
- Updated HLS iPad system and Compliance system used by all ROE's in Illinois
- Provided training on Coding for teachers
- Provided training on Follett Destiny Library for consortium members
- Facilitated training for Online Application System for partner school districts

Phil Morris, Director is also President of the Illinois Educational Technology Leaders (IETL).



FINANCE REPORTS

Meg Fetzer, Director of Finance • mfetzer@kaneroe.org

CERTIFIED PERSONNEL

DISTRICT	TOTAL CERTIFIED (INCLUDE PART TIME)	DOCTORS & ED SPEC/ CAS DEGREE	MASTERS DEGREE	BACHELORS DEGREE	TEACHERS (INCLUDE PART TIME)	AVG. SAL FULL-TIME CERTIFIED TEACHERS	AVG. SAL FULL-TIME CERTIFIED ADMIN
U -46 ELGIN	2,566	28	1,972	566	603	\$68,637	\$103,712
101 BATAVIA	447	14	369	64	92	\$78,400	\$110,240
129 AURORA WEST	978	20	749	209	252	\$72,912	\$98,083
131 AURORA EAST	1,046	20	658	368	185	\$60,244	\$93,356
300 DUNDEE	1,656	58	1,107	491	393	\$58,944	\$104,789
301 CENTRAL	334	16	189	129	54	\$55,455	\$101,218
302 KANELAND	362	5	264	93	72	\$67,205	\$97,857
303 ST CHARLES	1,943	36	864	1,043	202	\$70,825	\$120,331
304 GENEVA	479	11	338	130	142	\$69,790	\$109,438
TOTAL FY2018	9,811	208	6,510	3,093	1,995	\$66,935	\$104,336
		2.12%	66.35%	31.53%	20.33%		
TOTAL FY2017	8,909	211	6,456	2,242	1,906	\$65,255	\$100,888
		2.37%	72.47%	25.17%	21.39%		

Source: Kane County School Districts, Compiled by Meg Fetzer, CPA, mfetzer@kaneroe.org

FINANCE REPORTS

Meg Fetzer, Director of Finance • mfetzer@kaneroe.org

CERTIFIED PERSONNEL (CONT.)

DISTRICT	AVG. YRS. EXPERIENCE TEACHING IN ILLINOIS	ENROLLMENT PER CERTIFIED STAFF MEMBER FY2018	ENROLLMENT PER CERTIFIED STAFF MEMBER FY2017	TEACHER TO ADMIN STAFF RATIO	SUPPORT STAFF	ENROLLMENT TO SUPPORT STAFF RATIO	ENROLLMENT PER FALL HOUSING RPT FY2017
U -46 ELGIN	13.7	15.2	15.0	16.0	1,948	20.0	38,934
101 BATAVIA	12.0	13.0	13.0	12.8	74	78.6	5,819
129 AURORA WEST	9.0	12.6	12.9	10.4	510	24.1	12,315
131 AURORA EAST	9.0	13.4	13.8	7.2	127	110.7	14,061
300 DUNDEE	11.0	12.7	12.7	14.4	857	24.5	20,973
301 CENTRAL	10.1	12.5	13.3	20.9	242	17.2	4,168
302 KANELAND	10.5	12.2	12.3	15.7	228	19.3	4,406
303 ST CHARLES	12.9	6.4	11.9	15.9	455	27.3	12,436
304 GENEVA	9.8	12.1	11.9	17.1	255	22.7	5,801
AVERAGE	10.9	12.2	13.0	14.5	4,696	25.3	118,913
PRIOR YEAR	10.5	13.0	13.0	13.5	4,168	28.7	119,431

Source: Kane County School Districts, Compiled by Meg Fetzer, CPA, mfetzer@kaneroe.org



FINANCE REPORTS

Meg Fetzer, Director of Finance • mfetzer@kaneroe.org

CLASSROOM BUILDINGS IN USE JULY 1, 2016 - JUNE 30, 2017

DISTRICT	ELEMENTARY SCHOOL		MIDDLE OR JR HIGH SCHOOL		SENIOR HIGH SCHOOL		MOBILE CLASSROOMS		OTHER SPECIAL ED, VOC. ED ETC.	
	FY 18	FY 17	FY 18	FY 17	FY 18	FY 17	FY 18	FY 17	FY 18	FY 17
U-46 ELGIN	40	40	8	8	5	5	19	20	5	6
101 BATAVIA	6	6	1	1	1	1	0	0	0	0
129 AURORA WEST	10	11	4	4	1	1	0	0	3	2
131 AURORA EAST	13	13	4	4	1	1	0	0	2	2
300 DUNDEE	16	16	4	4	3	3	0	0	4	4
301 CENTRAL	4	4	2	2	1	1	0	1	0	0
302 KANELAND	4	4	1	1	1	1	0	0	1	1
303 ST CHARLES	12	12	3	3	2	2	6	6	0	0
304 GENEVA	6	6	2	2	1	1	1	1	0	0
TOTAL	111	112	29	29	16	16	26	28	15	15

Source: Kane County School Districts, Compiled by Meg Fetzer, CPA, mfetzer@kaneroe.org

FINANCE REPORTS

Meg Fetzer, Director of Finance • mfetzer@kaneroe.org

PUBLIC SCHOOL ENROLLMENT - SEPTEMBER 2017

FY18 Enrollment

School	FY17	FY18	Pre-K	K-5	6-8	9-12
U46 Elgin	39,365	38,934	1,242	16,725	9,022	11,945
101 Batavia	5,840	5,819	144	2,258	1,487	1,930
129 West Aurora	12,378	12,315	569	5,104	2,862	3,780
131 East Aurora	14,322	14,061	649	6,294	3,156	3,962
300 Dundee	20,688	20,973	685	9,117	4,780	6,391
301 Central	4,025	4,168	93	2,012	983	1,080
302 Kaneland	4,478	4,406	61	1,898	1,115	1,332
303 St. Charles	12,561	12,436	278	4,641	2,944	4,573
304 Geneva	5,774	5,801	95	2,424	1,355	1,927
TOTAL FY18		118,913	3,816	50,473	27,704	36,920
TOTAL FY17	119,431		3,841	51,438	27,592	36,560

Source from Fall Enrollment Counts

<https://www.isbe.net/Pages/Fall-Enrollment-Counts.aspx>



FINANCE REPORTS

Meg Fetzer, Director of Finance • mfetzer@kaneroe.org

ISBE FEDERAL & STATE REVENUE - FISCAL YEAR ENDING JUNE 30, 2018

	\$ STATE AID *	\$ STATE - OTHER	\$ FEDERAL	\$ TOTAL	\$ PER ADA	\$ ADA
U-46 ELGIN	157,137,958	27,713,031	33,546,998	218,397,987	6,098	35,816
101 BATAVIA	4,949,890	3,516,223	1,181,902	9,648,015	1,752	5,508
129 AURORA WEST	50,682,619	9,846,410	12,581,632	73,110,661	6,381	11,458
131 AURORA EAST	119,137,586	11,931,171	18,695,836	149,764,593	12,055	12,423
300 DUNDEE	50,782,463	12,441,603	13,263,460	76,487,526	3,987	19,186
301 CENTRAL	6,861,929	2,183,850	582,917	9,628,696	2,515	3,828
302 KANELAND	6,819,345	4,321,068	392,698	11,533,111	2,851	4,046
303 ST CHARLES	9,603,273	5,626,686	1,843,453	17,073,412	1,530	11,157
304 GENEVA	4,244,048	2,678,540	374,811	7,297,399	1,354	5,390
						108,812
TOTAL FY2018	410,219,111	80,258,582	82,463,707	572,941,400	5,265	
TOTAL FY2017	324,356,914	113,327,650	75,735,204	513,419,768	4,749	
CHANGE	20.93%	-41.20%	8.16%	10.39%	9.81%	

Source: FRIS Report

Additional Financial and District information may be obtained at www.isbe.net



REGIONAL OFFICE OF EDUCATION
KANE COUNTY

REGIONAL SUPERINTENDENT PATRICIA DAL SANTO
ASSISTANT REGIONAL SUPERINTENDENT DEANNA OLIVER



28 North 1st Street, South Tower
Geneva, IL 60134



Phone: 630-232-5955
Fax: 630-208-5115



www.kaneroe.org
hello@kaneroe.org

